



# User's Guide



**CANNON CM3K™**

100 MECO LANE | OAK RIDGE, TN 37830 | 865.670.3713 | ITOOLCO.COM  
© 2019 PROPERTY OF ITOOLCO



## GENERAL SAFETY RULES

**WARNING! Read and understand all instructions.** Failure to follow all instructions listed below may result in electric shock, fire, and/or serious personal injury.

### SAVE THESE INSTRUCTIONS

#### WORK AREA SAFETY

**Keep your work area clean and well lit.** Cluttered benches and dark areas invite accidents.

**Do not operate power tools in explosive atmospheres, such as in the presence of flammable liquids, gases, or dust.** Power tools create sparks which may ignite the dust or fumes.

**Keep bystanders, children, and visitors away while operating a power tool.** Distractions can cause you to lose control.

#### ELECTRICAL SAFETY

**Grounded tools must be plugged into an outlet properly installed and grounded in accordance with all codes and ordinances. Never remove the grounding prong or modify the plug in any way. Do not use any adapter plugs. Check with a qualified electrician if you are in doubt as to whether the outlet is properly grounded.** If the tools should electrically malfunction or break down, grounding provides a low resistance path to carry electricity away from the user.

**Avoid body contact with grounded surfaces such as pipes, radiators, ranges, and refrigerators.** There is an increased risk of electric shock if your body is grounded.

**Do not expose power tools to rain or wet conditions.** Water entering a power tool will increase the risk of electric shock.

**Do not abuse the cord. Never use the cord to carry the tools or pull the plug from an outlet. Keep cord away from heat, oil, sharp edges or moving parts. Replace damaged cords immediately.** Damaged cords increase the risk of electric shock.

**When operating a power tool outside, use an outdoor extension cord marked "W-A" or "W."** These cords are rated for outdoor use and reduce the risk of electric shock.

#### PERSONAL SAFETY

**Stay alert, watch what you are doing and use common sense when operating a power tool. Do not use tool while tired or under the influence of drugs, alcohol, or medication.** A moment of inattention while operating power tools may result in serious personal injury.

**Dress properly. Do not wear loose clothing or jewelry. Contain long hair. Keep your hair, clothing, and gloves away from moving parts.** Loose clothes, jewelry, or long hair can be caught in moving parts.

**Avoid accidental starting. Be sure switch is off before plugging in.** Carrying tools with your finger on the switch or plugging in tools that have the switch on invites accidents.

**Remove adjusting keys or switches before turning the tool on.** A wrench or a key that is left attached to a rotating part of the tool may result in personal injury.

**Do not overreach. Keep proper footing and balance at all times.** Proper footing and balance enables better control of the tool in unexpected situations.

**Use safety equipment. Always wear eye protection.** Dust mask, non-skid safety shoes, hard hat, or hearing protection must be used for appropriate conditions.

#### TOOL USE AND CARE

**Use clamps or other practical way to secure and support the workpiece to a stable platform.** Holding the work by hand or against your body is unstable and may lead to loss of control.

**Do not force tool. Use the correct tool for your application.** The correct tool will do the job better and safer at the rate for which it was designed.

**Do not use tool if switch does not turn it on and off.** Any tool that cannot be controlled with the switch is dangerous and must be repaired.

**Disconnect the plug from the power source before making any adjustments, changing accessories, or storing the tool.** Such preventive safety measures reduce the risk of starting the tool accidentally.

**Store idle tools out of reach of children and other untrained persons.** Tools are dangerous in the hands of untrained users.

**Maintain tools with care. Keep cutting tools sharp and clean.** Properly maintained tools, with sharp cutting edges, are less likely to bind and are easier to control.

**Check for misalignment or binding of moving parts, breakage of parts, and any other condition that may affect the tool's operation. If damaged, have the tool serviced before using.** Many accidents are caused by poorly maintained tools.

**Use only accessories that are recommended by the manufacturer for your model.** Accessories that may be suitable for one tool may become hazardous when used on another tool.

#### SERVICE

**Tool service must be performed only by qualified repair personnel.** Service or maintenance performed by unqualified personnel could result in a risk of injury.

**When servicing a tool, use only identical replacement parts. Follow instructions in the "Maintenance" section of this manual.** Use of unauthorized parts or failure to follow maintenance instructions may create a risk of electric shock or injury.



**BEFORE OPERATION OF THIS TOOL, READ AND UNDERSTAND ALL OF THE INSTRUCTIONS AND SAFETY INFORMATION IN THIS MANUAL**



**Contents**

SAFETY FIRST ..... 3

SAFETY ALERT SYMBOLS..... 3

IMPORTANT SAFETY INFORMATION ..... 4

DESCRIPTION AND IDENTIFICATION..... 6

SET UP AND OPERATION ..... 14

LIMITED WARRANTY: ITOOLCO CORDLESS CANNON 3K..... 20

## SAFETY FIRST

Safety is essential in the use and maintenance of this tool. This instruction manual and any markings on the tool provide information for avoiding hazards and unsafe practices related to the use of this tool. Observe all of the safety information provided.

### SAFETY ALERT SYMBOLS

This symbol is used to call your attention to hazards or unsafe practices that could result in injury or property damage. The three signal words, defined below, indicate the severity of the hazard. The message after the signal word provides the information for preventing or avoiding the hazard.



#### **DANGER**

Immediate hazards that, if not avoided, **WILL** result in severe injury or death.



#### **WARNING**

Hazards that, if not avoided, **COULD** result in severe injury or death.



#### **CAUTION**

Hazards or unsafe practices that, if not avoided, **MAY** result in injury or property damage.



## IMPORTANT SAFETY INFORMATION



### **WARNING**

Read and understand all instructions and safety information in this manual before operating or servicing this tool.

Also read the instruction manual supplied with your drill.

FAILURE TO OBSERVE THESE WARNINGS CAN RESULT IN SEVERE INJURY OR DEATH



### **WARNING – PERSONAL SAFETY HAZARDS**

Only qualified persons should use the Cordless Cannon 3K.

Wear eye protection and hard hat when using this tool.

Do not use this tool while tired or under the influence of drugs, alcohol, or medication.

Keep body parts and loose clothing away from moving parts.

Always follow operating procedures.

FAILURE TO OBSERVE THESE WARNINGS CAN RESULT IN SEVERE INJURY OR DEATH.



### **WARNING – ELECTRICAL SHOCK HAZARDS**

Do not expose power tools to rain or wet conditions. Water entering a power tool can increase the risk of electric shock.

Plug into a (GFCI) ground fault interrupted circuit outlet only.

Use a 20 Amp 120 Volt extension cord no more than 100 feet in

length. Maintain proper care of power cords. Do not use the cord to carry the tool or pull the plug from an outlet. Replace damaged cords immediately. Damaged cords can increase the risk of electrical shock. Do not use this tool near live circuits.

Shut off and lock out power when working near existing

circuits. FAILURE TO OBSERVE THESE WARNINGS CAN RESULT IN SEVERE INJURY OR DEATH.

**WARNING – ENTANGLEMENT HAZARD**

Do not operate this tool while wearing loose-fitting clothing.

Retain long hair.

Keep hands away from pullers capstan. Rope at capstan can pinch or crush a hand or body part.

FAILURE TO OBSERVE THESE WARNINGS CAN RESULT IN SEVERE INJURY OR DEATH.

**WARNING – TIPPING HAZARD**

Use the same size adapter with conduit. Lock adapter under conduit nut. Disassemble when not in use.

FAILURE TO OBSERVE THESE WARNINGS CAN RESULT IN SEVERE INJURY OR DEATH.

**WARNING – TOOL USE HAZARDS**

Use this tool for manufacturer's intended purpose only. Use other than that which is described in this manual can result in injury or property damage.

Do not use nylon or polypropylene rope. Extreme force can be stored when rope stretches. Inspect all aspects of the wire pull to ensure safety.

Inspect all aspects of the wire pull to ensure safety.

Only qualified personnel should use pulling equipment.

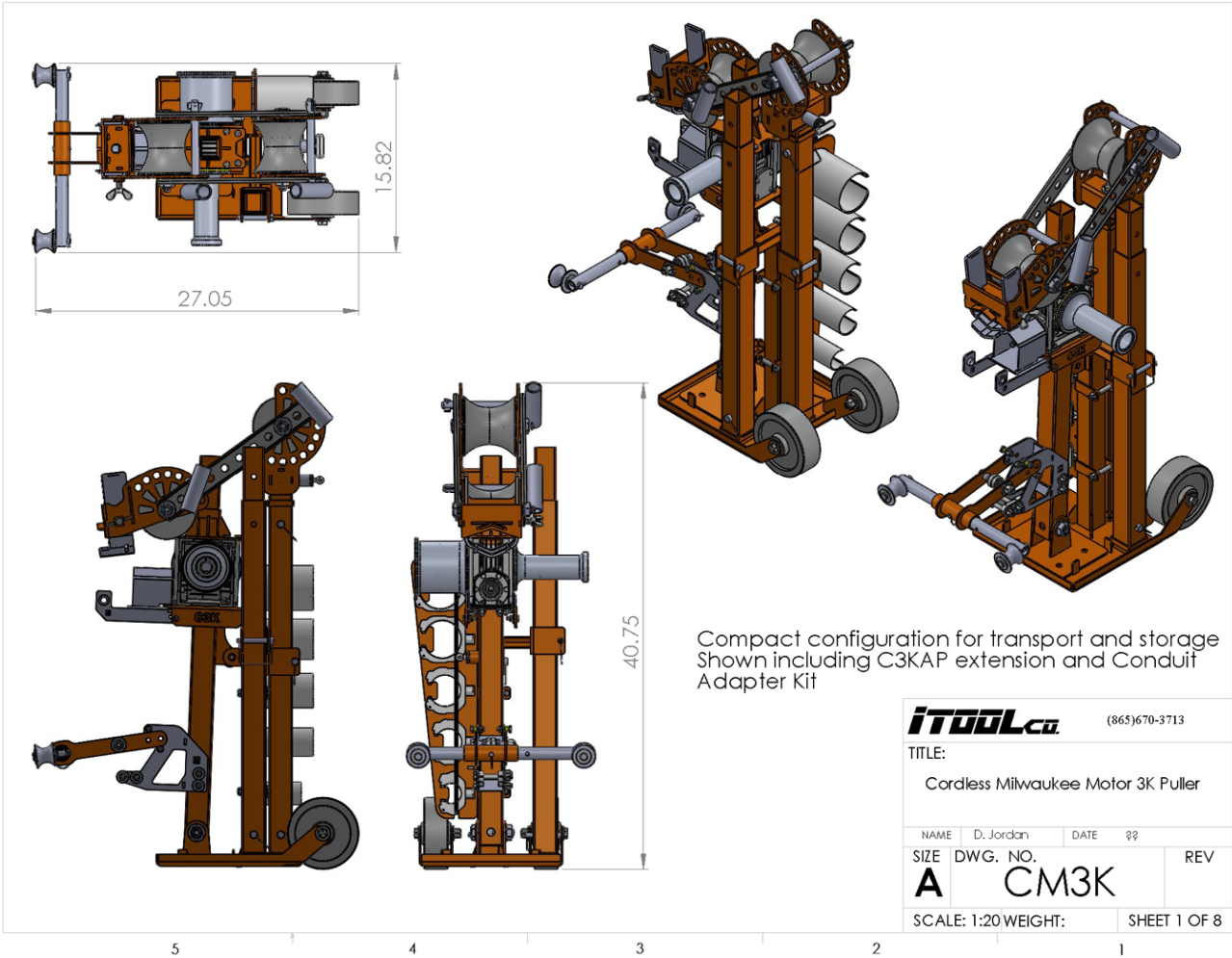
Do not use the cable puller as a hoist or winch. The cable puller cannot lower a load. The load may fall and cause serious injury or death.

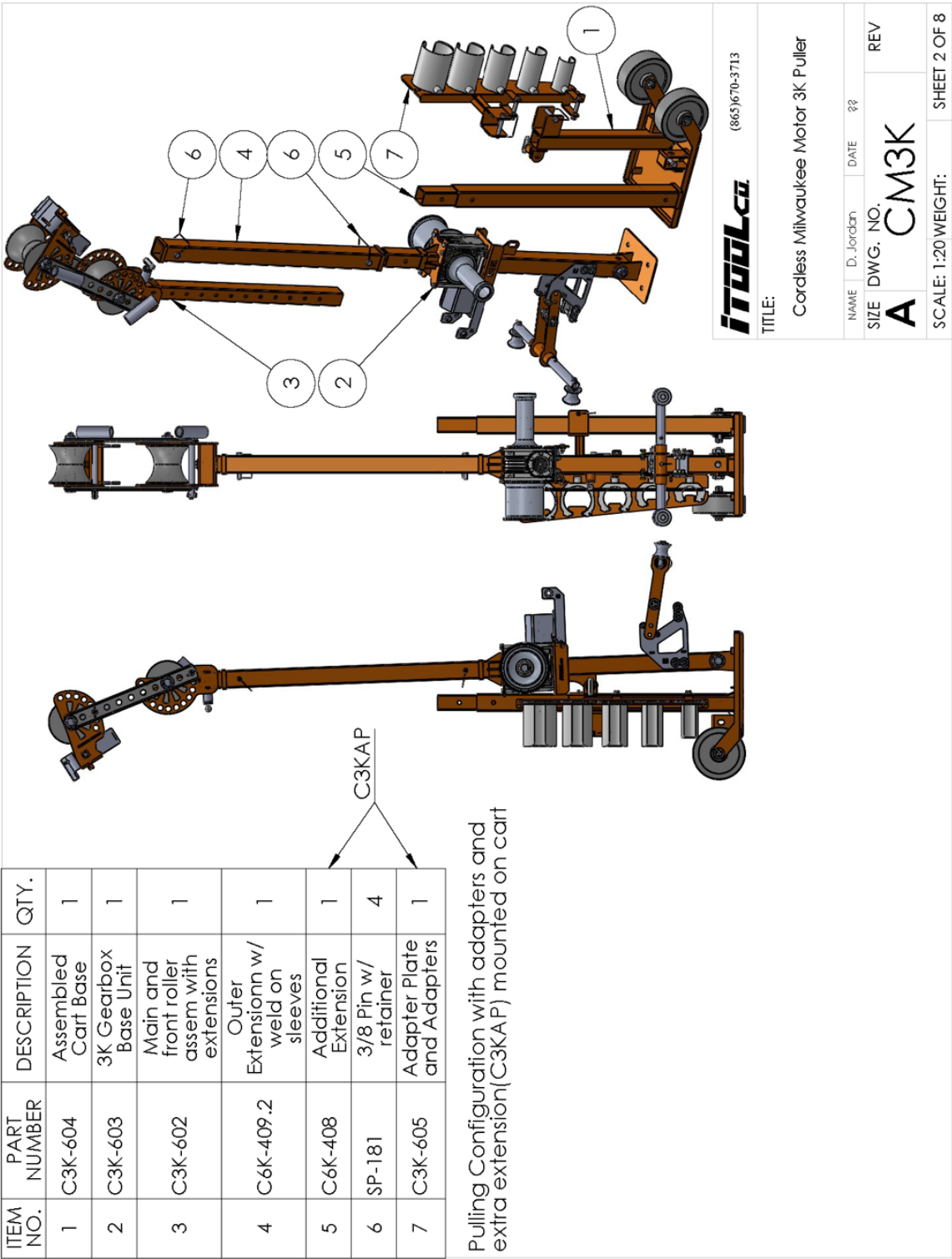
FAILURE TO OBSERVE THESE WARNINGS CAN RESULT IN SEVERE INJURY OR DEATH.

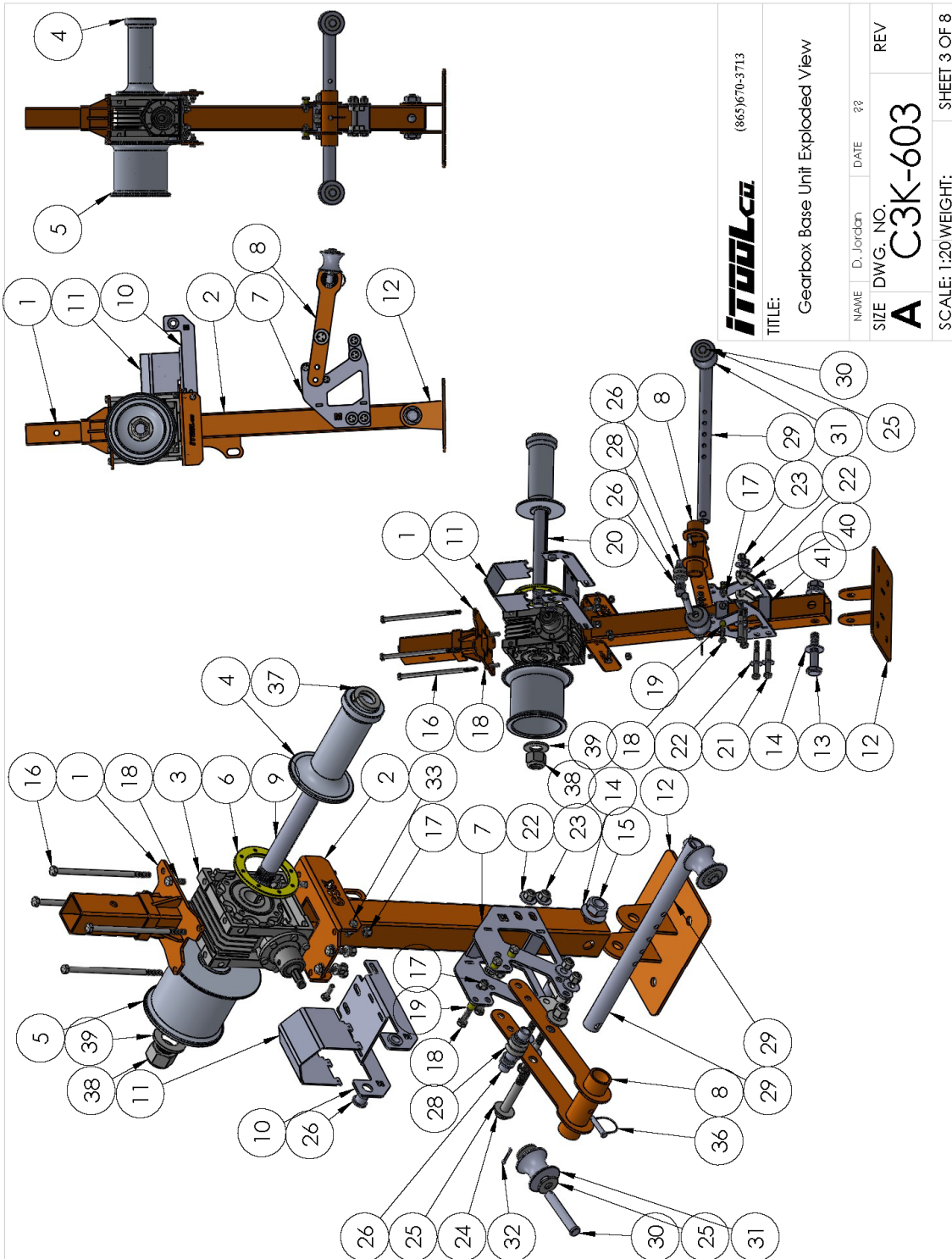


DESCRIPTION AND IDENTIFICATION

The iTOOLco Cannon 3K is a 3,000 lb. cordless cable puller intended to pull small to medium wire through conduit.

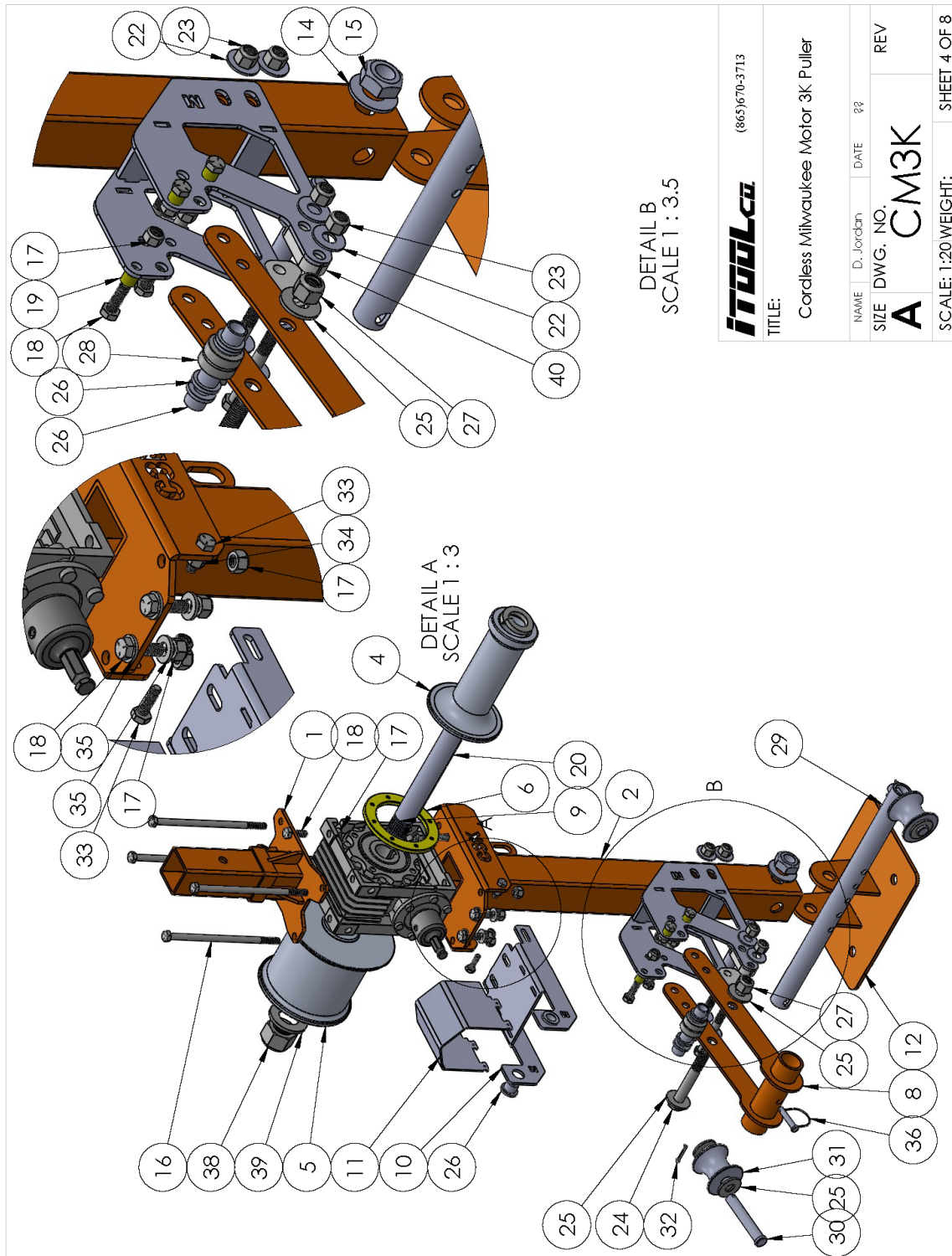






<b>IToolco</b>		(865)670-3713	
TITLE: Gearbox Base Unit Exploded View			
NAME: D. Jordan	DATE: 2/2	REV: A	C3K-603
SIZE: DWG. NO.			
SCALE: 1:20		WEIGHT:	SHEET 3 OF 8





<b>itoolco</b>		(865)670-3713	
TITLE:			
Cordless Milwaukee Motor 3K Puller			
NAME	D. Jordan	DATE	??
SIZE	DWG. NO.	REV	
A	CM3K		
SCALE: 1:20 WEIGHT:		SHEET 4 OF 8	

ITEM NO.	PART NUMBER	DESCRIPTION	QTY.
1	C3K-401	Gearbox Top	1
2	C3K-402	Gearbox Bottom	1
3	GB-006	3K Gearbox	1
4	C3K-100M	High Torque Capstan	1
5	C3K-101M	High Speed Capstan	1
6	SP-274	3K Brass bearing	1
7	C3K-417	Mill Cordless Motor Handle mount	2
8	C3K-408	Trigger pull weldment	1
9	SP-273	3k Output Shaft	1
10	C3K-412	Cordless Mil Motor Mount	1
11	C3K-413	Motor Cover Coated	1
12	C6K-402	Base Plate	1
13	HW-173	5/8" 11t x 3.25" Bolt	1
14	HW-176	5/8" SAE Washer	2
15	Hw-182	5/8" nyloc nut	1
16	HW-352	5/16" 18T x 6.5L G5 Bolt	4
17	HW-353	5/16" 18T Nylock Hex Nut	14
18	HW-354	5/16" 18T x 1"L G5 Hex Bolt	10
19	SP-249	5/16"ID 7/16"OD x 3/8" long oilite sleeve	4
20	HW-355	5/16" Sq. x7"L Key Stock	1
21	HW-142	3/8" 16t X 3" Hex Bolt	4
22	HW-166	1/2" Flat Washer	8
23	HW-306	3/8 16T x nyloc nut	4
24	HW-356	1/2" 13T x 3.5"L G5 Hex Bolt	1
25	HW-166	1/2" flat washer	6
26	SP-108	Capture Bushing	6
27	HW-168	1/2" 13t Nyloc nut	1
28	SP-149	Interior Roller Bearing	1
29	C6K-410	Coated Rope roller tube	1
30	HW-254	1/2" X 3"L Clevis pin	2
31	SP-109	Rope roller	2
32	HW-222	1/8" cotter pin	2
33	HW-120	1/4"-20t x 7/8" hex bolt	2
34	HW-128	1/4 20 Nyloc nut	2
35	HW-357	5/16" Flat Washer	4
36	HW-250	.25 Hitch Pin	1
37	HW-358	1" Split Lock Washer	1
38	HW-358	1" 8T Nylock Nut	1
39	HW-200	1" Flat Washer	1
40	C3K-418	Zincd Motor Handle Spacer	2
41	C3K-419	Tabbed Motor Handle Spacer	2

TITLE:  
Gearbox Base Unit BOM

DWG. NO.  
**C3K-603**

WEIGHT: SHEET 5 OF 8

4

3

2

1

ITEM NO.	PART NUMBER	DESCRIPTION	QTY.
1	C3K-405.3	Main roller 3K	1
2	C6K-405	Inner Telescoping Tube	1
3	C3K-411	3K Side arm Coated	2
4	HW-176	5/8" SAE Washer	8
5	SP-264	3K Roller	2
6	C6K-407	Front Knuckle	1
7	HW-175	5/8" 11t x 6.5" Bolt	2
8	Hw-182	5/8" nyloc nut	2
9	HW-159	1/2" 13T x .75"L Bolt	1
10	HW-166	1/2" flat washer	1
11	HW-164	1/2" 13t Wing Bolt	1
12	CK-10	Universal Adapter	1
13	SP-001.2	Pull Pop Pin	1
14	SP-182	5/8" Hitch Pin w/ Flashlight Holder	2

**ITOOLCO** (865)670-3713

TITLE: Main and Front rollers with Ext.

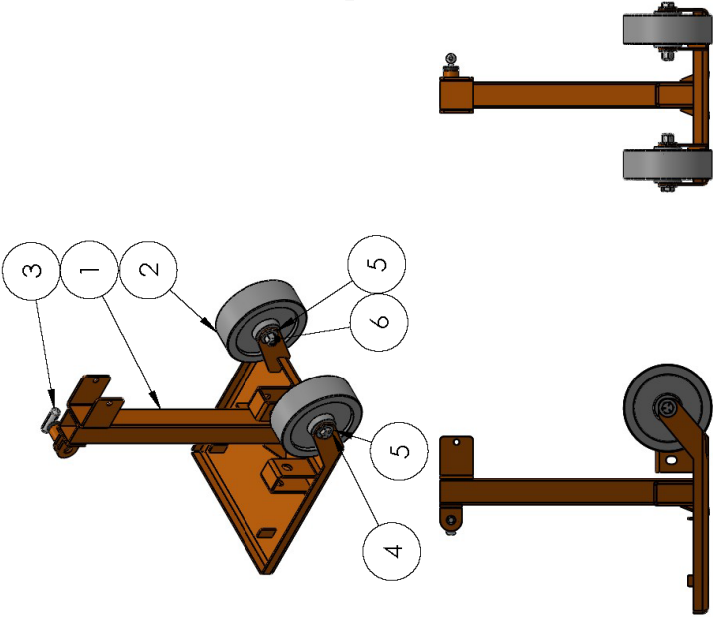
NAME	D. Jordan	DATE	gg
SIZE	DWG. NO.	REV	
A	C3K-602		

SCALE: 1:20 WEIGHT: SHEET 6 OF 8

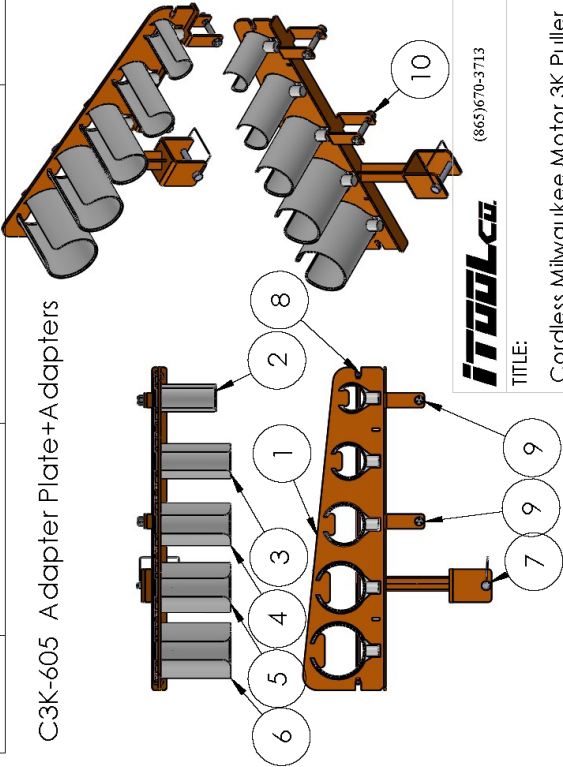
ITEM NO.	PART NUMBER	DESCRIPTION	QTY.
1	C3K-410	Adapter plate	1
2	CK-20	2" Conduit Adapter	1
3	CK-25	2.5" Conduit Adapter	1
4	CK-30	3" Conduit Adapter	1
5	CK-35	3.5" Conduit Adapter	1
6	CK-40	4" Conduit Adapter	1
7	SP-181	3/8 Pin w/ retainer	1
8	SP-189	18" Orange bungee	1
9	HW-136	2.5" - 3/8 x16T G5 cap screw	2
10	HW-306	3/8 16T x nyloc nut	2


ITEM NO.	PART NUMBER	DESCRIPTION	QTY.
1	C3K-409.2	Cart Base	1
2	SP-283	6" x 2" phenolic wheel	2
3	SP-001.2	Pull Pop Pin	1
4	HW-356	1/2" 13T x 3.5"L G5 Hex Bolt	2
5	HW-166	1/2" flat washer	4
6	HW-168	1/2" 13T Nyloc nut	2

C3K-604 Assembled Cart Base



C3K-605 Adapter Plate+Adapters





(865)670-3713

TITLE:  
Cordless Milwaukee Motor 3K Puller

NAME	D. Jordan	DATE	??
SIZE	DWG. NO.	REV	
A	CM3K		

SCALE: 1:20 WEIGHT: SHEET 7 OF 8

ITEM NO.	PART NUMBER	DESCRIPTION	QTY.
1	C3K-605	Adapter Plate and Adapters	1
2	C6K-408	Additional Extension	1

ITEM NO.	PART NUMBER	DESCRIPTION	QTY.
1	C3K-410	Adapter plate	1
2	CK-20	2" Conduit Adapter	1
3	CK-25	2.5" Conduit Adapter	1
4	CK-30	3" Conduit Adapter	1
5	CK-35	3.5" Conduit Adapter	1
6	CK-40	4" Conduit Adapter	1
7	SP-181	3/8 Pin w/ retainer	1
8	SP-189	18" Orange bungee	1
9	HW-136	2.5" - 3/8 x 16T G5 cap screw	2
10	HW-306	3/8 16T x nyloc nut	2

TITLE: Accessory Pack for 3K Pullers

NAME	D. Jordan	DATE	??
SIZE	DWG. NO.	REV	
A	C3KAP		

SCALE: 1:20 WEIGHT: SHEET 8 OF 8



## SET UP AND OPERATION

Step 1. Inspect Puller for damage.  
Figure 1.



Figure 1

Step 2. Install adapter plate securing in place with retainer pins. Figures 2-6.



Figure 2

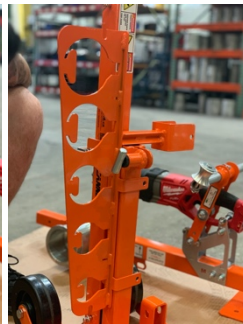


Figure 3



Figure 4



Figure 5



Figure 6

Step 3. Install the adapters securing in place with 18" bungee cord.

Note: 5" and 6" adapters are also available separately. Figures 7-13.



Figure 7



Figure 8



Figure 9



Figure 10

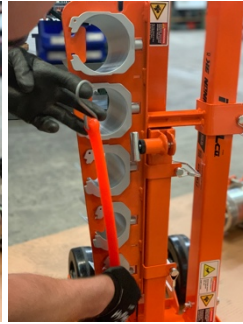


Figure 11

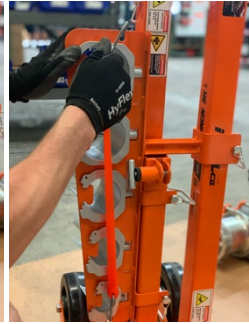


Figure 12



Figure 13

Step 4. Install extension securing in place with retainer pins. Figures 14-17.



Figure 14



Figure 15



Figure 16



Figure 17

Step 5. Install main roller arm to puller. Figures 18-24.



Figure 18

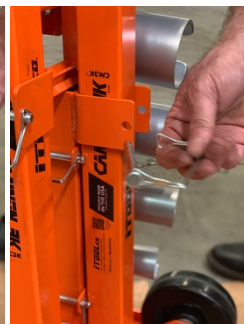


Figure 19

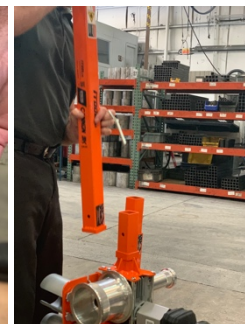


Figure 20



Figure 21



Figure 22

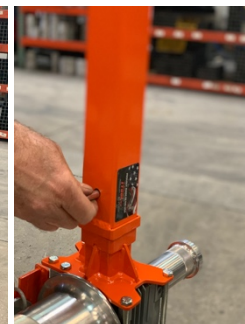


Figure 23



Step 6. Adjust the main roller and front roller pins for proper alignment (see Fig. 33). All pins must be inserted in place prior to pulling. Figures 25-33.

Seat puller in the conduit. Adapter should be level or flat matching the conduit. Figure 33.



Figure 25

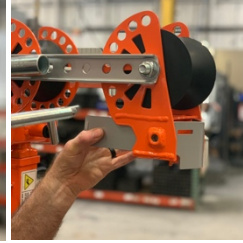


Figure 26



Figure 27



Figure 28



Figure 29

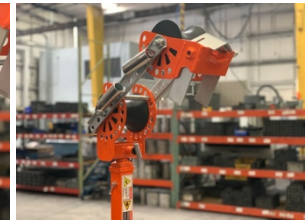


Figure 30

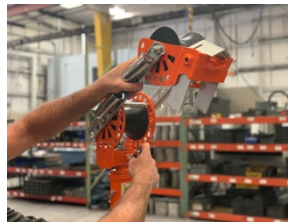


Figure 31

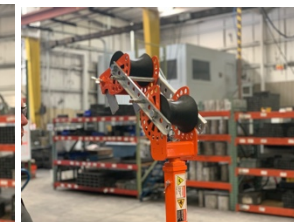


Figure 32



Figure 33

Step 7. Extend the puller as needed for extra wire. Figure 34.



Figure 34

Step 8. Insert fully charged battery. Figures 35-36.



Figure 35



Figure 36

Step 9. When ready begin, thread rope tale over the rope engagement roller and pull up on in a steady continuous motion to start the pull.

To stop the pull, simply slack off the rope. This will stop the pull. Figure 37.



Figure 37

**CAUTION:** During the pull, rope must always come in contact with both front and main roller. Never bypass a roller. Figures 38-39.



Figure 38



Figure 39



Step 10. Press forward/  
reverse button to center  
position to put in neutral.  
Figure 40.



Figure 40



## LIMITED WARRANTY: ITOOLCO CORDLESS CANNON 3K

iTOOLco warrants all new Cordless Cannon 3K pullers covered by this agreement, when properly used, to be free from defects in material and workmanship under normal use and service for which it is intended for a period of one year from date of delivery by the dealer. Date of delivery shall be the date product is placed in possession of the user. NORMAL WEAR FROM USE IS NOT PART OF THIS WARRANTY. This limited warranty is extended to the original user only and is not transferrable to, nor enforceable by any other person.

iTOOLco will replace free of charge any part(s) of the product found to be defective when such part(s) is returned to iTOOLco at the address shown below, freight prepaid. If the part(s) is found to be defective, iTOOLco will refund freight charges paid by you in returning the defective part(s) and prepay replacement part(s) freight charges. iTOOLco will not be responsible for more than replacement of any defective part(s) and standard freight charges (parcel post or UPS ground rate) of any part(s) found to be defective.

THIS IS THE EXCLUSIVE REMEDY. ITOOLCO SHALL NOT BE RESPONSIBLE OR LIABLE FOR ANY INCIDENTAL OR CONSEQUENTIAL DAMAGES RESULTING FROM ANY DEFECTS COVERED BY THIS WARRANTY OR ANY IMPLIED WARRANTY APPLICABLE TO THE PRODUCT INCLUDING, BUT NOT LIMITED TO, PROPERTY DAMAGE, LOSS OF USE OF PRODUCT, LOSS OF TIME, LOSS OF PROFITS, INCONVENIENCE, COMMERCIAL LOSS, LABOR COSTS, SERVICE TRIPS, AND MILEAGE.

Some states do not allow limitation on how long an implied warranty lasts, so the above limitation may not apply to you.

### Dealer/Distributor Warranty Claim Procedure

1. All warranty claims must be pre-approved by iTOOLco Warranty Department PRIOR to starting any warranty work. Warranty work performed without prior approval will not be considered.
2. All claims must be handled through dealer/distributor.
3. Written approval must be received from iTOOLco before return of merchandise. A Return Authorization is to be returned with the merchandise which is sent back.
4. All parts must be returned to iTOOLco at the address shown below, freight prepaid.
5. The serial number of the product and the date of delivery must accompany the part(s) being returned.
6. If the part(s) is found to have failed because of a defect in material or workmanship, replacement will be made on a no-charge basis, and the part(s) returned, freight prepaid. Standard freight charges (parcel post or UPS ground rate) incurred in returning the part(s) will be refunded.
7. For reasons of expediency, replacement and/or repair part(s) may be shipped as soon as possible and billed to the dealer/distributor. When part(s) is returned, if it is covered under warrant, credit will be issued for the part(s) and freight charges.
8. All parts found to be defective shall be retained by and shall become the property of iTOOLco. This warranty gives you specific legal rights, and you may also have other rights which vary from state to state.

Corporate Address: iTOOLco  
100 Meco Lane  
Oak Ridge, TN 37830

