



# User's Guide



**VISUAL MATERIAL CENTER™**

100 MECO LANE | OAK RIDGE, TN 37830 | 865.670.3713 | ITOOLCO.COM  
© 2019 PROPERTY OF ITOOLCO



**BEFORE OPERATION OF THIS TOOL, READ AND UNDERSTAND ALL OF THE INSTRUCTIONS AND SAFETY INFORMATION IN THIS MANUAL**



**Contents**

SAFETY FIRST ..... 3

SAFETY ALERT SYMBOLS..... 3

IMPORTANT SAFETY INFORMATION FOR ITOOLCO VISUAL MATERIAL CENTER..... 4

DESCRIPTION AND IDENTIFICATION..... 6

SET UP ..... 11

LIMITED WARRANTY: ITOOLCO VISUAL MATERIAL CENTER ..... 14

## SAFETY FIRST

Safety is essential in the use and maintenance of this tool. This instruction manual and any markings on the tool provide information for avoiding hazards and unsafe practices related to the use of this tool. Observe all of the safety information provided.

## SAFETY ALERT SYMBOLS

This symbol is used to call your attention to hazards or unsafe practices that could result in injury or property damage. The three signal words, defined below, indicate the severity of the hazard. The message after the signal word provides the information for preventing or avoiding the hazard.



### **DANGER**

Immediate hazards that, if not avoided, **WILL** result in severe injury or death.



### **WARNING**

Hazards that, if not avoided, **COULD** result in severe injury or death.



### **CAUTION**

Hazards or unsafe practices that, if not avoided, **MAY** result in injury or property damage.

**IMPORTANT SAFETY INFORMATION FOR ITOOLCO VISUAL MATERIAL CENTER****WARNING**

Read and understand all instructions and safety information in this manual before operating or servicing this tool.

FAILURE TO OBSERVE THESE WARNINGS CAN RESULT IN SEVERE INJURY OR DEATH

**WARNING – PERSONAL SAFETY HAZARDS**

Only qualified persons should use iTOOLCo's Pipe and Prefab Cart.

Wear eye protection and hard hat when using this tool.

Do not use this tool while tired or under the influence of drugs, alcohol, or medication.

Keep body parts and loose clothing away from moving parts.

Always follow operating procedures.

FAILURE TO OBSERVE THESE WARNINGS CAN RESULT IN SEVERE INJURY OR DEATH.

**WARNING – ENTANGLEMENT HAZARD**

Do not operate this tool while wearing loose-fitting clothing.

Retain long hair.

Keep hands away from wheels. Could pinch or crush a hand or body part.

FAILURE TO OBSERVE THESE WARNINGS CAN RESULT IN SEVERE INJURY OR DEATH.

**WARNING – TOOL USE HAZARDS**

Use this tool for manufacturer's intended purpose only. Use other than that which is described in this manual can result in injury or property damage.

FAILURE TO OBSERVE THESE WARNINGS CAN RESULT IN SEVERE INJURY OR DEATH.

**WARNING – TIPPING HAZARD**

Use caution when moving the Visual Material center on uneven surfaces. FAILURE TO OBSERVE THIS WARNING COULD RESULT IN SEVERE INJURY OR DEATH.

**WARNING – SHELF CAPACITY**

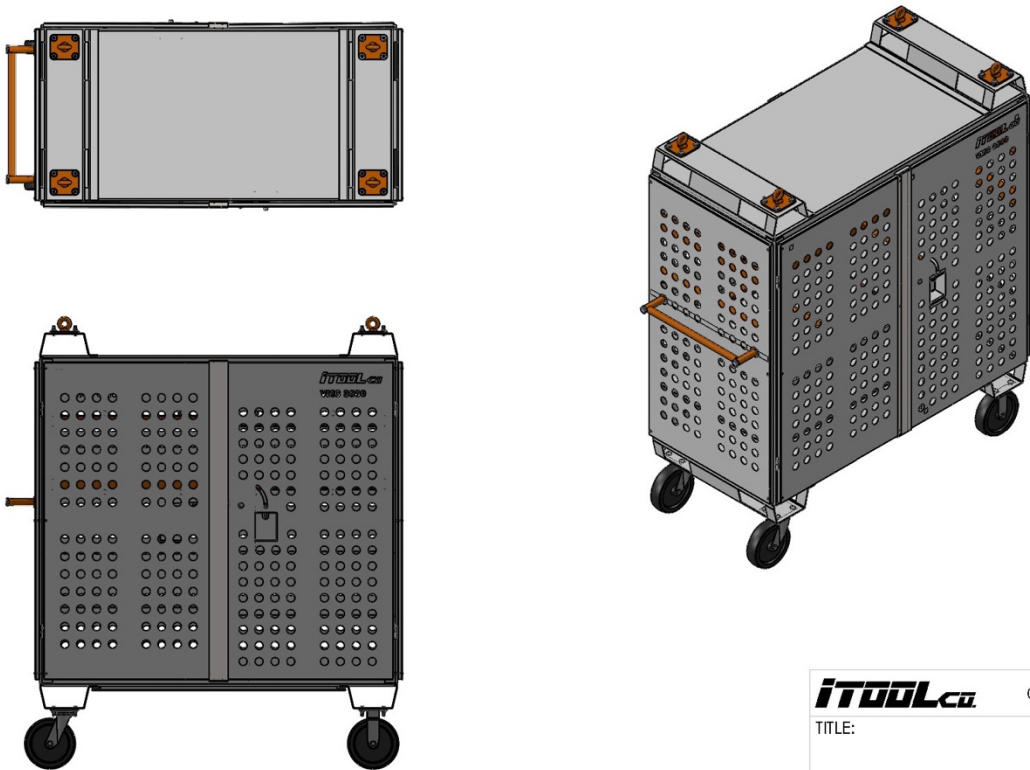
Maximum weight rating of 600 lb. per shelf or wire bar.

FAILURE TO OBSERVE THIS WARNING COULD RESULT IN SEVERE INJURY OR DEATH.

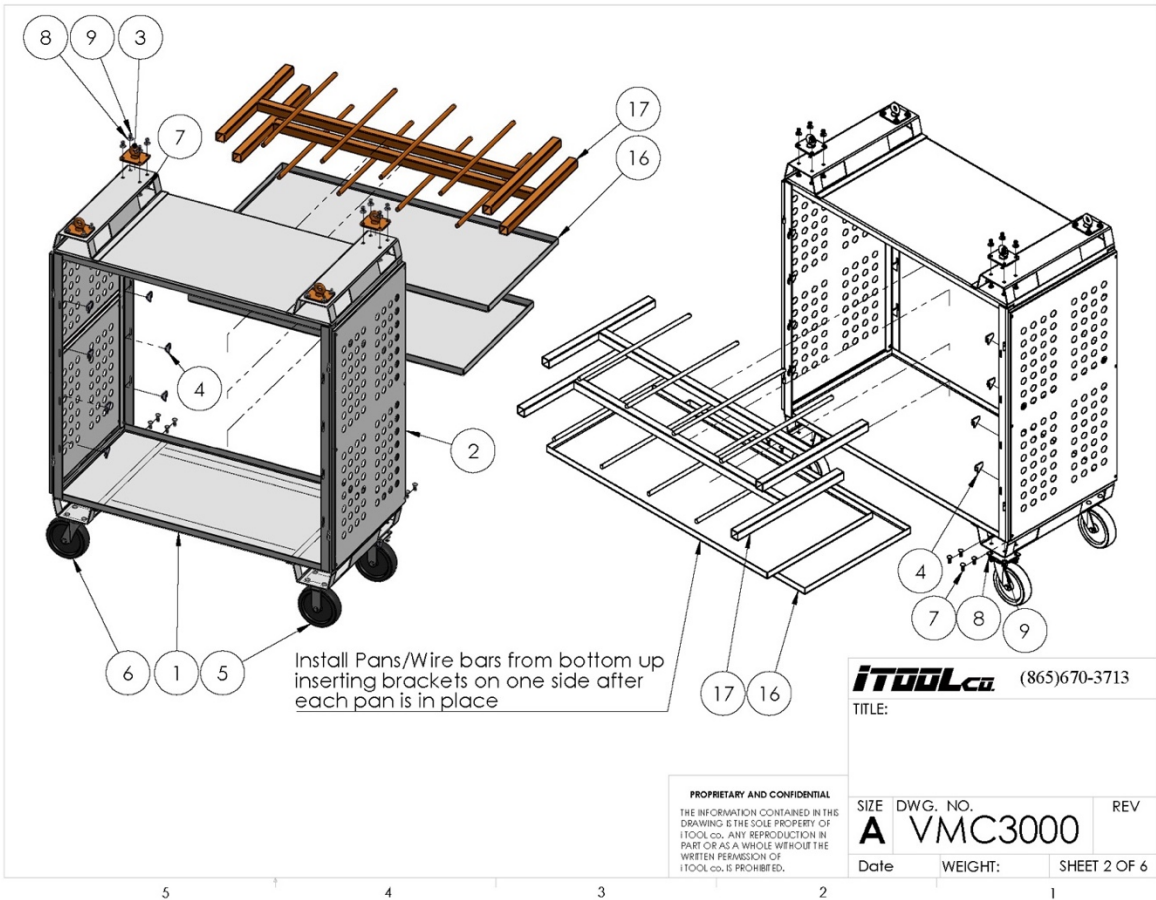


DESCRIPTION AND IDENTIFICATION

Keep the jobsite neat and organized whether you handle your own materials or your supplier provides a vendor managed cart. With a lockable design, you can access materials from two sides of the cart and it fits through 30" door. Four lifting eyes and top design forklift pockets make quick work of transporting the Visual Material Center™ to, from and around the jobsite.



<b>iTOOLCO</b>		(865)670-3713	
TITLE:			
NAME	D. Jordan	DATE	??
SIZE	DWG. NO.	REV	
A	VMC3000		
SCALE: 1:50		WEIGHT:	SHEET 1 OF 6



ITEM NO.	PART NUMBER	DESCRIPTION	VMC3000 No Shelves/QTY.
1	VMC-401	Cart Main Frame	1
2	VMIC-414	Coated Bolt on Side	2
3	VMIC-416	Bolt on Picking Eye	4
4	VMIC-408	Shelf Holding Bracket	16
5	SP-241	8" Pheniloc Swivel Caster	2
6	SP-240	8" Phenolic Rigid Caster	2
7	HW-327	3/8" 16T x 1.25"L Carriage Bolt	32
8	HW-166	1/2" Flat Washer	32
9	HW-150	3/8" Nylock Nut	24
10	HW-150	3/8" Nylock Nut	8
11	HW-334	10-24 x .5" Long Steel Binding Barrel	4
12	HW-333	10-24 x 1" long Carriage bolt fully threaded	4
13	HW-332	10-24 x 1.5" long fully threaded carriage bolt	8
14	HW-335	10-24 Nylock Hex Nut	8
15	HW-336	size #10 SAE Washer	8
16	VMIC-405	Coated Pans	2
17	VMIC-417	Wire Bar	2

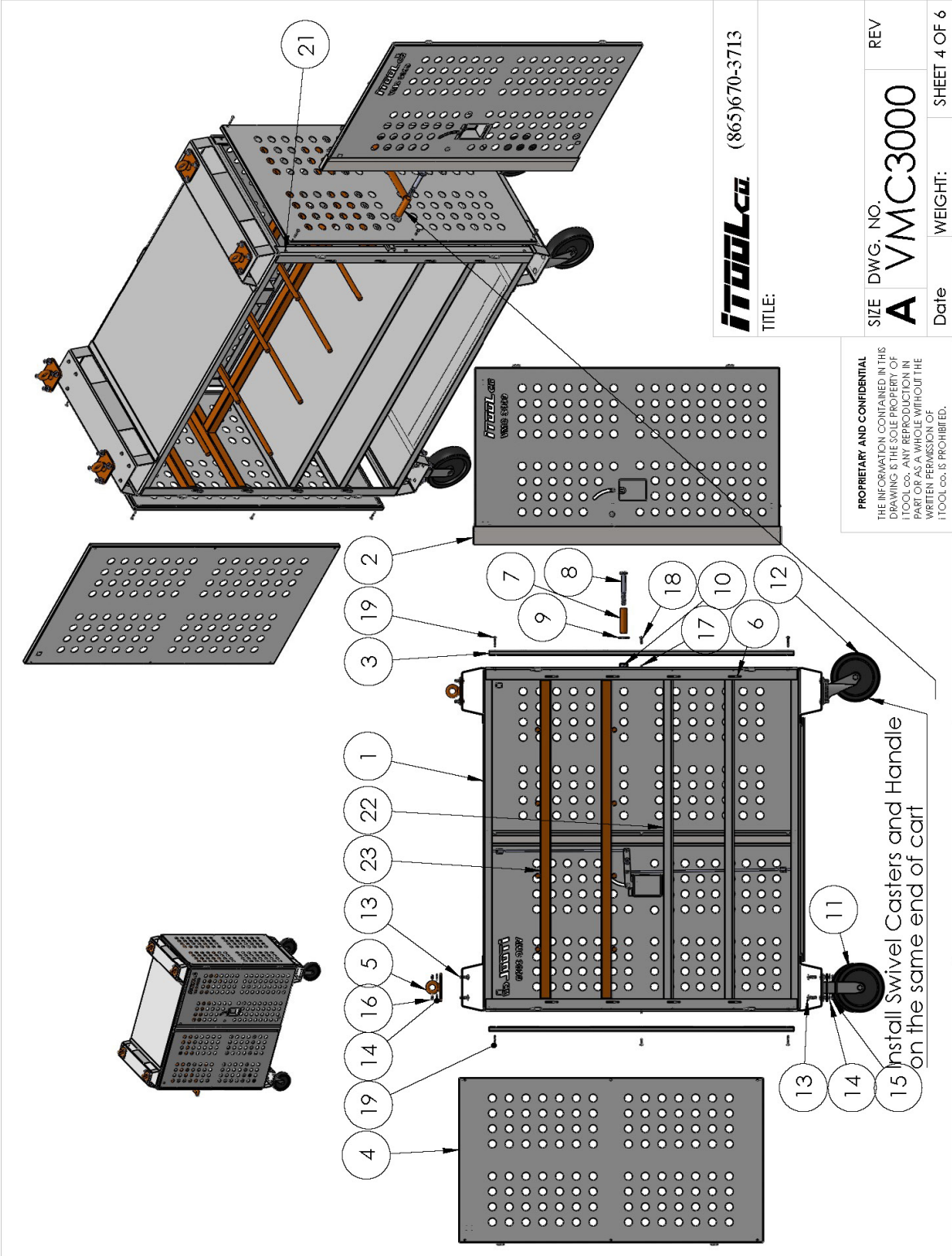
IToolCo (865)670-3713

TITLE:

SIZE DWG. NO. A VMC3000 REV

Date WEIGHT: SHEET 3 OF 6





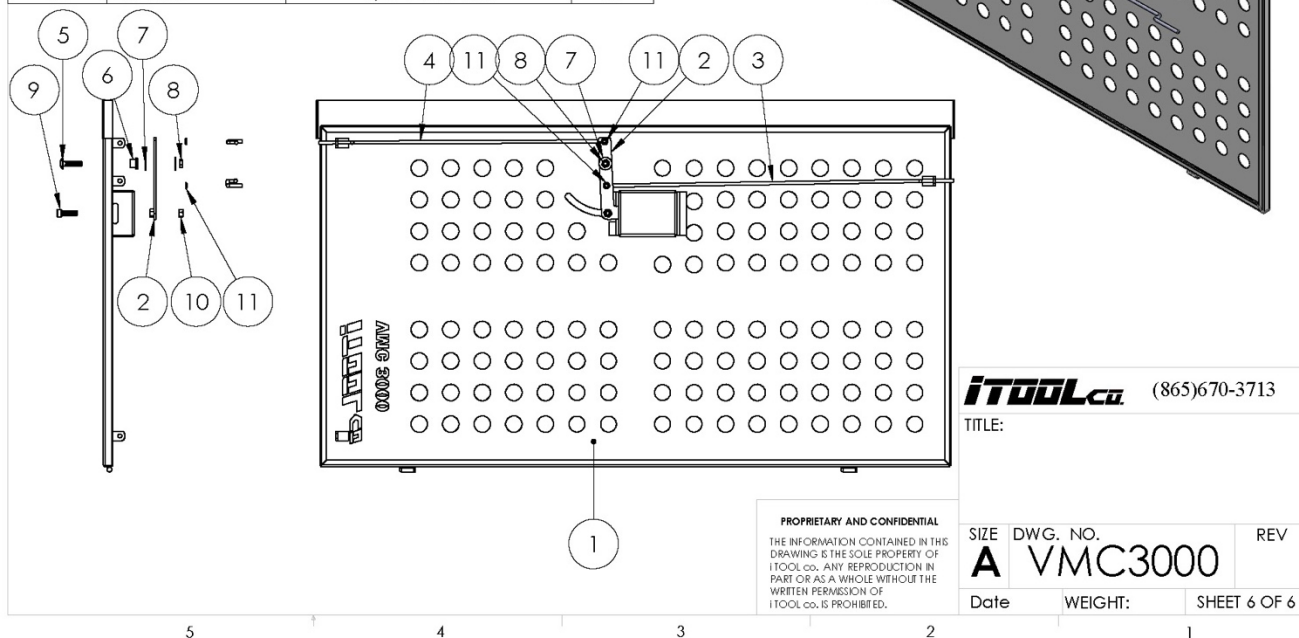


ITEM NO.	PART NUMBER	DESCRIPTION	Default/QT Y.
1	VMC-401	Cart Main Frame	1
2	VMIC-613	Assembled Door Latch Side	2
3	VMIC-414	Coated Bolt on Side	2
4	VMIC-415	Hinged Door No Logo	2
5	VMIC-416	Bolt on Picking Eye	4
6	VMIC-408	Shelf Holding Bracket	16
7	VMIC-421	Handle Weldment	1
8	HW-179	.625 1 1/4 x 5" bolt	2
9	HW-331	5/8" Standard Washer 1.75 OD	2
10	HW-182	5/8" nyloc nut	2
11	SP-241	8" Pheniloc Swivel Caster	2
12	SP-240	8" Phenolic Rigid Caster	2
13	HW-327	3/8" 16T x 1.25"L Carriage Bolt	32
14	HW-166	1/2" Flat Washer	32
15	HW-150	3/8" Nylock Nut	24
16	HW-150	3/8" Nylock Nut	8
17	HW-334	10-24 x .5" Long Steel Binding Barrel	4
18	HW-333	10-24 x 1" long Carriage bolt fully threaded	4
19	HW-332	10-24 x 1.5" long fully threaded carriage bolt	8
20	HW-335	10-24 Nylock Hex Nut	8
21	HW-336	size # 10 SAE Washer	8
22	VMIC-405	Coated Pans	2
23	VMIC-417	Wire Bar	2

**PROPRIETARY AND CONFIDENTIAL**  
THE INFORMATION CONTAINED IN THIS DRAWING IS THE SOLE PROPERTY OF ITOOL CO. ANY REPRODUCTION IN PART OR AS A WHOLE WITHOUT THE WRITTEN PERMISSION OF ITOOL CO. IS PROHIBITED.

<b>iTOOLCO</b> (865)670-3713	
TITLE:	
SIZE <b>A</b>	DWG. NO. <b>VMC3000</b>
Date	WEIGHT:
SHEET 5 OF 6	

ITEM NO.	PART NUMBER	DESCRIPTION	QTY.
1	VMIC-413	VMIC screw on end door	1
2	VMIC-407	Door Latch Zinc Coated	1
3	VMIC-418	Bent Lock Rod for Bottom	1
4	VMIC-419	Bent Lock Rod for Top	1
5	HW-328	3/8" 16T x 1.5" Long Carriage Bolt	1
6	SP-213	Capture Bushing	1
7	HW-166	1/2" Flat Washer	2
8	HW-150	3/8" Nylock Nut	1
9	HW-330	3/8" 16T x 1.25 Socket Head bolt	1
10	HW-329	3/8" 16T Hex Nut	1
11	HW-326	1/4" Push Nut	2



## WARNING

Shelf & Wire Bars rated at 600 lb. each.

## SET UP

1. Install the carriage bolts on the cart main frame.



2. Install doors as shown, tipping door slightly to insert bottom hinge as shown.



3. For picking with crane, use 4 (ea) individual rated straps with a minimum length of 4' long (ea).

Maximum Load for crane operation 1,500 lb.



4. Insert the shelf holding brackets at the desired heights for shelf or wire bar placement.



5. To rearrange shelving or wire bars, remove shelf support starting with highest shelf.

Allow shelf to drop then tip at an angle to remove or install.



6. Install remaining shelves and/or wire bars.



## LIMITED WARRANTY: ITOOLCO VISUAL MATERIAL CENTER

iTOOLco warrants all new Visual Material Centers covered by this agreement, when properly used, to be free from defects in material and workmanship under normal use and service for which it is intended for a period of one year from date of delivery by the dealer. Date of delivery shall be the date product is placed in possession of the user. NORMAL WEAR FROM USE IS NOT PART OF THIS WARRANTY. This limited warranty is extended to the original user only and is not transferrable to, nor enforceable by any other person.

iTOOLco will replace free of charge any part(s) of the product found to be defective when such part(s) is returned to iTOOLco at the address shown below, freight prepaid. If the part(s) is found to be defective, iTOOLco will refund freight charges paid by you in returning the defective part(s) and prepay replacement part(s) freight charges. iTOOLco will not be responsible for more than replacement of any defective part(s) and standard freight charges (parcel post or UPS ground rate) of any part(s) found to be defective.

THIS IS THE EXCLUSIVE REMEDY. ITOOLCO SHALL NOT BE RESPONSIBLE OR LIABLE FOR ANY INCIDENTAL OR CONSEQUENTIAL DAMAGES RESULTING FROM ANY DEFECTS COVERED BY THIS WARRANTY OR ANY IMPLIED WARRANTY APPLICABLE TO THE PRODUCT INCLUDING, BUT NOT LIMITED TO, PROPERTY DAMAGE, LOSS OF USE OF PRODUCT, LOSS OF TIME, LOSS OF PROFITS, INCONVENIENCE, COMMERCIAL LOSS, LABOR COSTS, SERVICE TRIPS, AND MILEAGE.

Some states do not allow limitation on how long an implied warranty lasts, so the above limitation may not apply to you.

### Dealer/Distributor Warranty Claim Procedure

1. All warranty claims must be pre-approved by iTOOLco Warranty Department PRIOR to starting any warranty work. Warranty work performed without prior approval will not be considered.
2. All claims must be handled through dealer/distributor.
3. Written approval must be received from iTOOLco before return of merchandise. A Return Authorization is to be returned with the merchandise which is sent back.
4. All parts must be returned to iTOOLco at the address shown below, freight prepaid.
5. The serial number of the product and the date of delivery must accompany the part(s) being returned.
6. If the part(s) is found to have failed because of a defect in material or workmanship, replacement will be made on a no-charge basis, and the part(s) returned, freight prepaid. Standard freight charges (parcel post or UPS ground rate) incurred in returning the part(s) will be refunded.
7. For reasons of expediency, replacement and/or repair part(s) may be shipped as soon as possible and billed to the dealer/distributor. When part(s) is returned, if it is covered under warrant, credit will be issued for the part(s) and freight charges.
8. All parts found to be defective shall be retained by and shall become the property of iTOOLco. This warranty gives you specific legal rights, and you may also have other rights which vary from state to state.

Corporate Address: iTOOLco  
100 Meco Lane  
Oak Ridge, TN 37830

