

# **IToolCo**

## User's Guide



# **REAL PALLET JACK™**

1325 CARDEN FARM DRIVE | CLINTON, TN 37716 | 865.670.3713 | ITOOLCO.COM  
© 2021 PROPERTY OF ITOOLCO



**BEFORE OPERATION OF THIS PRODUCT, READ  
AND UNDERSTAND ALL OF THE INSTRUCTIONS  
AND SAFETY INFORMATION IN THIS MANUAL**



## Contents

SAFETY FIRST .....	3
SAFETY ALERT SYMBOLS .....	3
IMPORTANT SAFETY INFORMATION FOR ITOOLCO'S REAL PALLET JACK .....	4
DESCRIPTION AND IDENTIFICATION .....	6
SET-UP AND OPERATION .....	11
LIMITED WARRANTY: ITOOLCO REAL PALLET JACK.....	13



## SAFETY FIRST

Safety is essential in the use and maintenance of this product. This instruction manual and any markings on the product provide information for avoiding hazards and unsafe practices related to the use of this product. Observe all of the safety information provided.

## SAFETY ALERT SYMBOLS

This symbol is used to call your attention to hazards or unsafe practices that could result in injury or property damage. The three signal words, defined below, indicate the severity of the hazard. The message after the signal word provides the information for preventing or avoiding the hazard.



### **DANGER**

Immediate hazards that, if not avoided, **WILL** result in severe injury or death.



### **WARNING**

Hazards that, if not avoided, **COULD** result in severe injury or death.



### **CAUTION**

Hazards or unsafe practices that, if not avoided, **MAY** result in injury or property damage.

## IMPORTANT SAFETY INFORMATION FOR ITOOLCO'S REAL PALLET JACK



### **WARNING**

DO NOT EXCEED LOAD LIMITS.

Read and understand all instructions and safety information in this manual before operating or servicing this product.

FAILURE TO OBSERVE THESE WARNINGS CAN RESULT IN SEVERE INJURY OR DEATH



### **WARNING – PERSONAL SAFETY HAZARDS**

Only qualified persons should use iTOOLCo's Real Pallet Jack.

Wear eye protection and hard hat when using this product.

Do not use this product while tired or under the influence of drugs, alcohol, or medication.

Keep body parts and loose clothing away from moving parts.

Always follow operating procedures.

FAILURE TO OBSERVE THESE WARNINGS CAN RESULT IN SEVERE INJURY OR DEATH.



### **WARNING – ENTANGLEMENT HAZARD**

Do not operate this product while wearing loose-fitting clothing.

Retain long hair.

Keep hands clear of the Real Pallet Jack at all times.

FAILURE TO OBSERVE THESE WARNINGS CAN RESULT IN SEVERE INJURY OR DEATH.



### **WARNING – PRODUCT USE HAZARDS**

Use this product for manufacturer's intended purpose only. Use other than that which is described in this manual can result in injury or property damage.

FAILURE TO OBSERVE THESE WARNINGS CAN RESULT IN SEVERE INJURY OR DEATH.

**WARNING – LIFTING HAZARDS**

Use forklift to maneuver spool.

Never get under the spool being lifted.

FAILURE TO OBSERVE THESE WARNINGS CAN RESULT IN SEVERE INJURY OR DEATH.

**WARNING – WORK AREA HAZARDS**

Keep work area clean and free of obstructions.

FAILURE TO OBSERVE THESE WARNINGS CAN RESULT IN SEVERE INJURY OR DEATH.

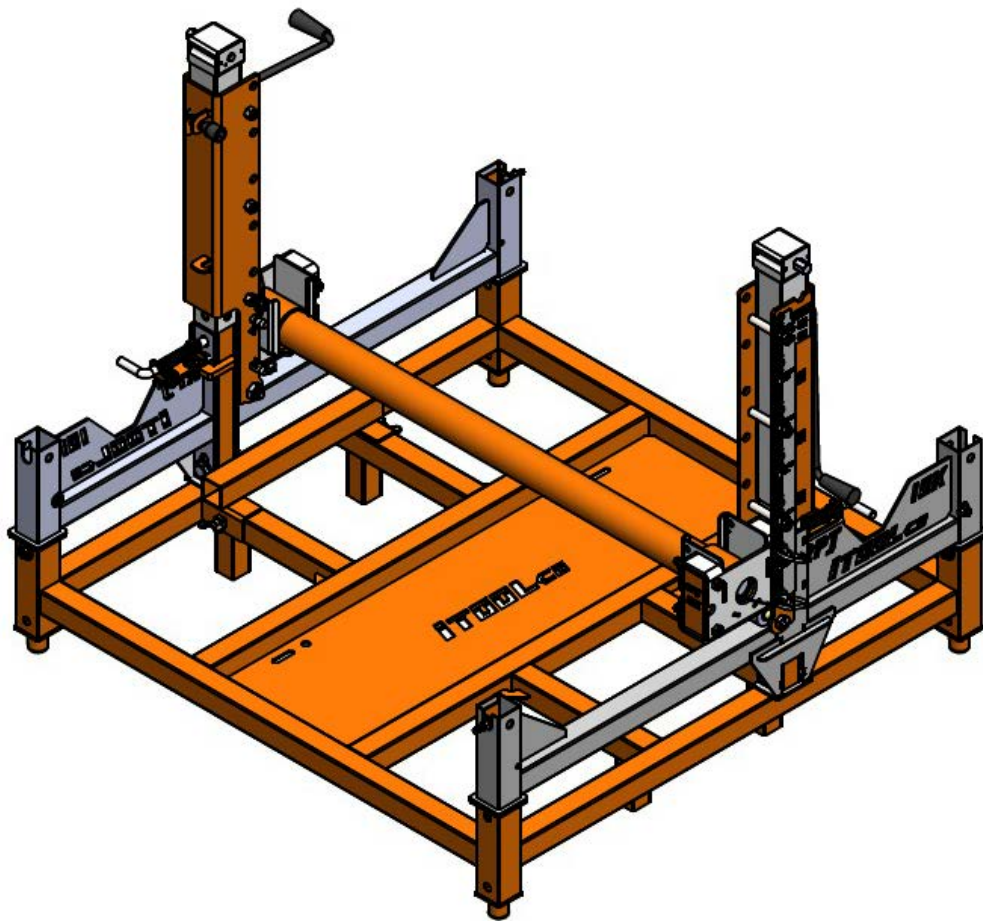
## DESCRIPTION AND IDENTIFICATION

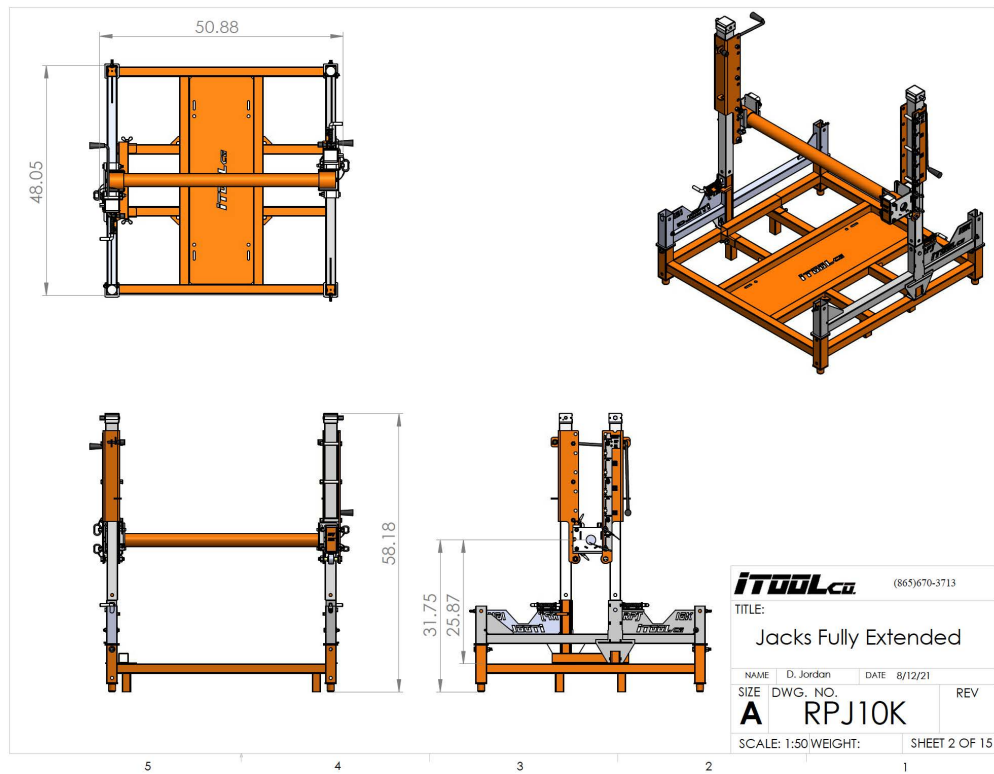
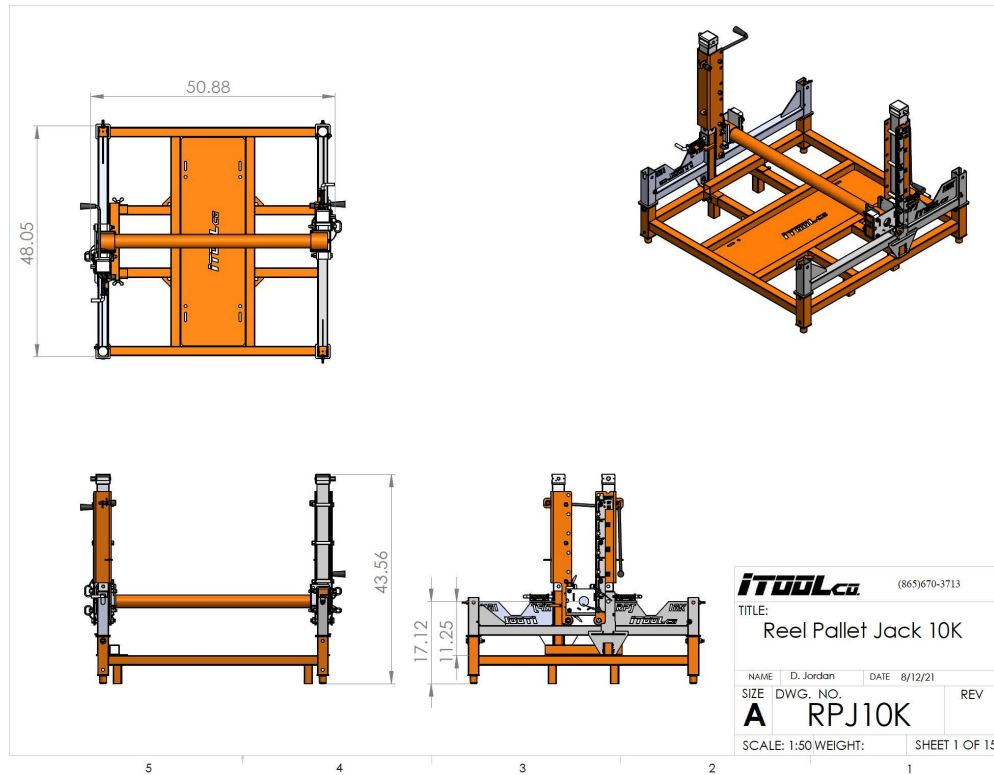
Deliver and place reels to your final installation point safely and effortlessly. iTOOLCo's Real Pallet Jack are a portable, heavy-duty solution for transporting spools up to 10,000 lb.

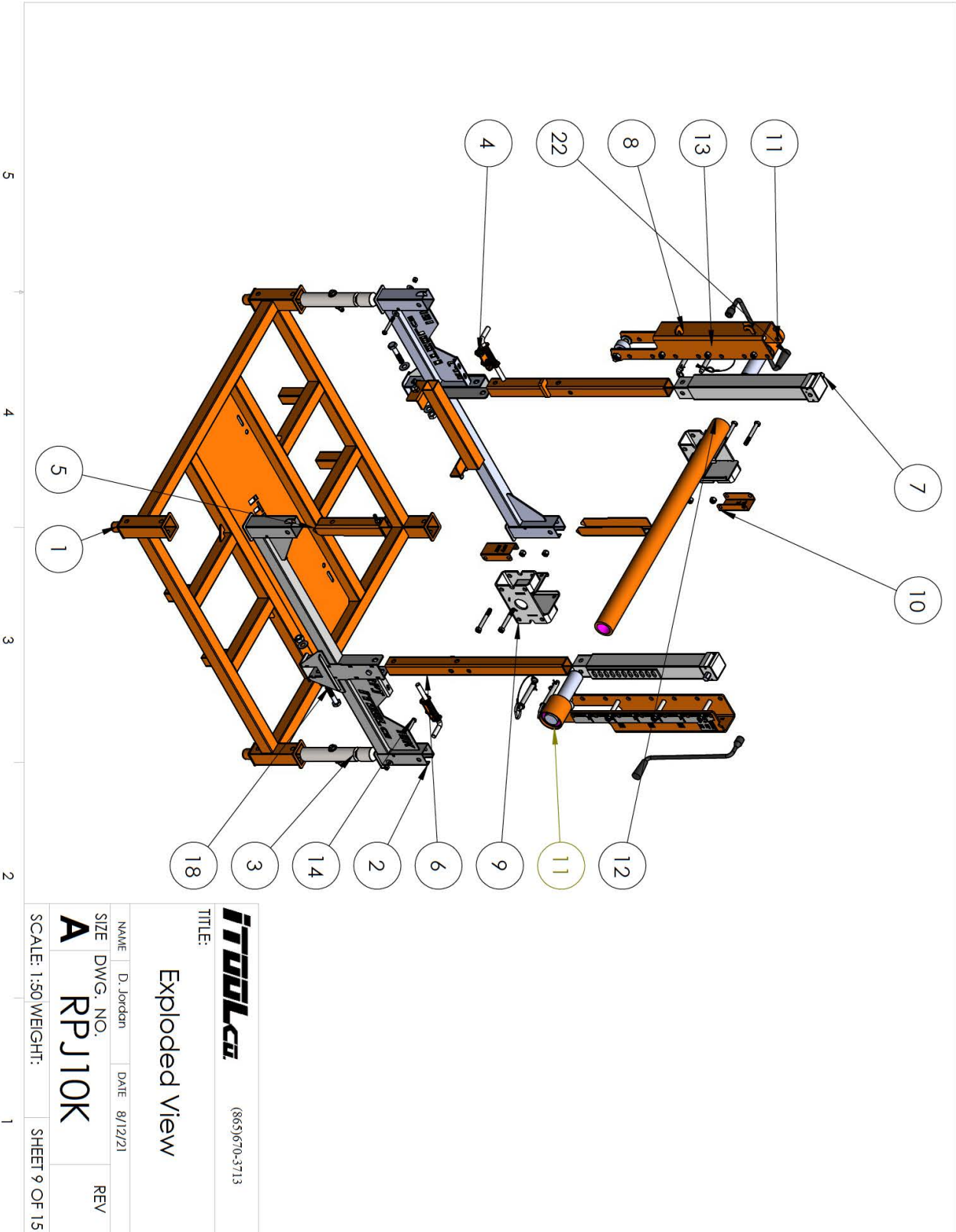
Made with all welded steel construction, loading and unloading the Real Pallet Jack is easy. Loading from the drum side minimizes the potential of wire damage from forks. The dual sided gates enable you to load spools from either side of the jack.

Whatever their size, spools automatically center the arbor hole with the spindle—ensuring the spool is perfectly positioned for a quick, smooth payout every time. Maneuverability on the jobsite is a snap using a forklift.

Added Bonus: Real Pallet Jacks collapse and stack for easy compact storage.









Step 1: Make sure you have the following - Real Pallet Jack, two arbors, one axle, and the adjustable stop.

Image 1



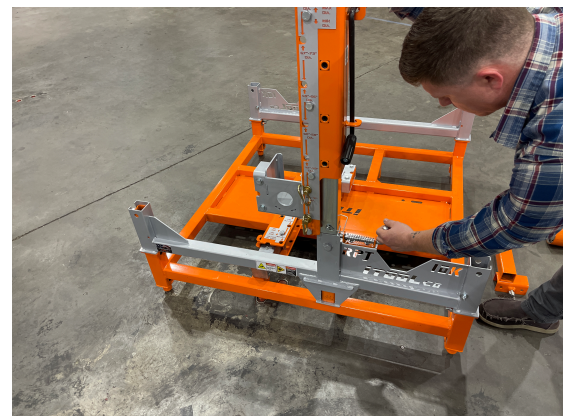
1

Step 2: The jack mechanism will need to be raised from its stored position to a vertical position to allow jack to snap into position

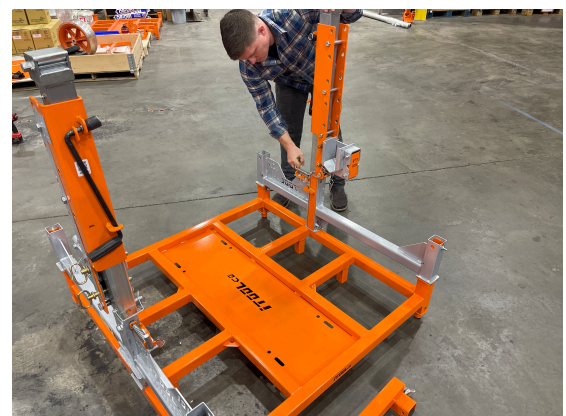
Images 2.1,2.2,2.3,N.1.



2.1



2.2



2.3

NOTE: When folding and unfolding the jack, ensure that the orange plate on the Jack is above the engagement pin as shown.

Image N.1



N.1

Step 3: Install Bumper Stop for spool placement on Real Pallet Jack as shown.

Images 3.1,3.2.



3.1



3.2

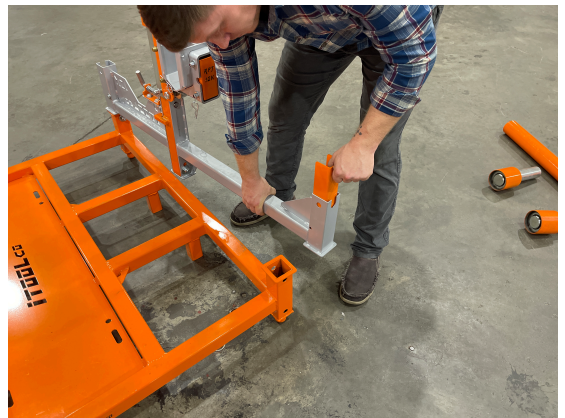


Step 4: Open gates to allow proper placement of spool as shown by removing the pin in the drop in lock, lifting the drop in lock, and opening the gate. Repeat for both sides.

Images 4.1,4.2.



4.1



4.2

Step 5: With both gates open you are now ready to load the Real Pallet Jack.

Image 5.1



5.1

Step 6: Pick up your spool from the drum side as shown.

image 6.1



6.1

Step 7: Place spool by tapping the spool against the bumper stop as shown.

Images 7.1,7.2.



7.1



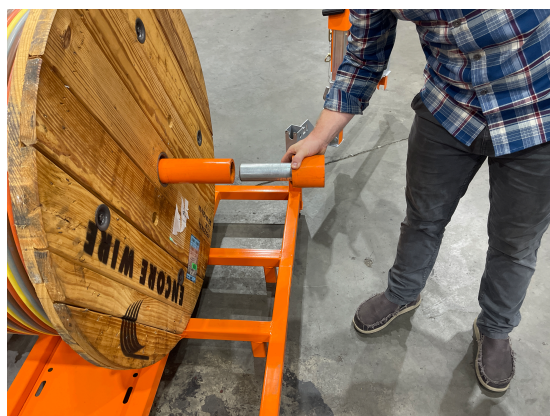
7.2

Step 8: Install axles and arbors through the spool as shown.

images 8.1,8.2.



8.1

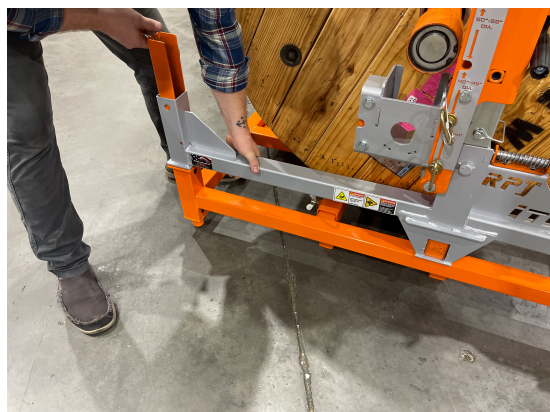


8.2

Step 9: Close gate on both sides as shown. Then insert drop pin.

Note: Lift up on the gate to let it slide back onto the frame, drop locking pin in place.

Image 9.1



9.1



Step 10: Using a 3/4" socket and drill, or provided wrench, raise jack until arbor rests in carriage as shown. Continue raising jack to lift spool and payoff.

Images 10



10

Step 11: During Transport the spool must be resting on the Real Pallet Jack and immobile with the jacks not lifting the spool. The Spool, Real Pallet Jack, and axle should all have their own strapping when traveling.

When placing the spool on the transport frame using a forklift, position as shown letting the Real Pallet Jack set down onto the wheeled frame.

images 11.1,11.2.

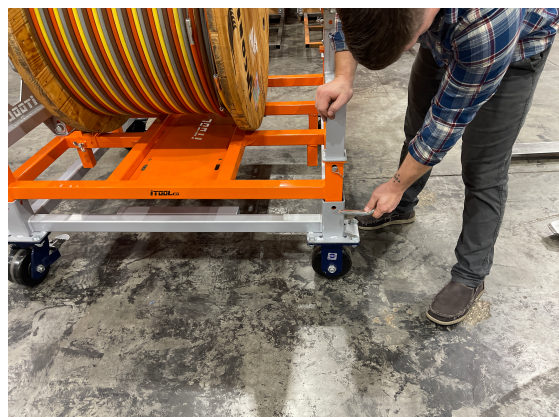


11



11.2

Step 12: Install Safety Pin as show (If using the transport frame)



12



## LIMITED WARRANTY: ITOOLCO REAL PALLET JACK

iTOOLco warrants all new Real Pallet Jacks covered by this agreement, when properly used, to be free from defects in material and workmanship under normal use and service for which it is intended for a period of one year from date of delivery by the dealer. Date of delivery shall be the date product is placed in possession of the user. NORMAL WEAR FROM USE IS NOT PART OF THIS WARRANTY. This limited warranty is extended to the original user only and is not transferrable to, nor enforceable by any other person.

iTOOLco will replace free of charge any part(s) of the product found to be defective when such part(s) is returned to iTOOLco at the address shown below, freight prepaid. If the part(s) is found to be defective, iTOOLco will refund freight charges paid by you in returning the defective part(s) and prepay replacement part(s) freight charges. iTOOLco will not be responsible for more than replacement of any defective part(s) and standard freight charges (parcel post or UPS ground rate) of any part(s) found to be defective.

THIS IS THE EXCLUSIVE REMEDY. ITOOLCO SHALL NOT BE RESPONSIBLE OR LIABLE FOR ANY INCIDENTAL OR CONSEQUENTIAL DAMAGES RESULTING FROM ANY DEFECTS COVERED BY THIS WARRANTY OR ANY IMPLIED WARRANTY APPLICABLE TO THE PRODUCT INCLUDING, BUT NOT LIMITED TO, PROPERTY DAMAGE, LOSS OF USE OF PRODUCT, LOSS OF TIME, LOSS OF PROFITS, INCONVENIENCE, COMMERCIAL LOSS, LABOR COSTS, SERVICE TRIPS, AND MILEAGE.

Some states do not allow limitation on how long an implied warranty lasts, so the above limitation may not apply to you.

### Dealer/Distributor Warranty Claim Procedure

1. All warranty claims must be pre-approved by iTOOLco Warranty Department PRIOR to starting any warranty work. Warranty work performed without prior approval will not be considered.
2. All claims must be handled through dealer/distributor.
3. Written approval must be received from iTOOLco before return of merchandise. A Return Authorization is to be returned with the merchandise which is sent back.
4. All parts must be returned to iTOOLco at the address shown below, freight prepaid.
5. The serial number of the product and the date of delivery must accompany the part(s) being returned.
6. If the part(s) is found to have failed because of a defect in material or workmanship, replacement will be made on a no-charge basis, and the part(s) returned, freight prepaid. Standard freight charges (parcel post or UPS ground rate) incurred in returning the part(s) will be refunded.
7. For reasons of expediency, replacement and/or repair part(s) may be shipped as soon as possible and billed to the dealer/distributor. When part(s) is returned, if it is covered under warrant, credit will be issued for the part(s) and freight charges.
8. All parts found to be defective shall be retained by and shall become the property of iTOOLco. This warranty gives you specific legal rights, and you may also have other rights which vary from state to state.

Corporate Address: iTOOLco  
1325 Carden Farm Drive  
Clinton, TN 37716

