

# **IToolCo**

## User's Guide



# **MANHOLE ADAPTER™**

100 MECO LANE | OAK RIDGE, TN 37830 | 865.670.3713 | ITOOLCO.COM  
© 2019 PROPERTY OF ITOOLCO



**BEFORE OPERATION OF THIS TOOL, READ AND UNDERSTAND ALL OF THE INSTRUCTIONS AND SAFETY INFORMATION IN THIS MANUAL**



**Contents**

SAFETY FIRST ..... 3

SAFETY ALERT SYMBOLS..... 3

IMPORTANT SAFETY INFORMATION FOR ITOOLCO MANHOLE ADAPTER ..... 4

DESCRIPTION AND IDENTIFICATION..... 6

SET UP ..... 7

LIMITED WARRANTY: ITOOLCO MANHOLE ADAPTER ..... 10

## SAFETY FIRST

Safety is essential in the use and maintenance of this tool. This instruction manual and any markings on the tool provide information for avoiding hazards and unsafe practices related to the use of this tool. Observe all of the safety information provided.

### SAFETY ALERT SYMBOLS

This symbol is used to call your attention to hazards or unsafe practices that could result in injury or property damage. The three signal words, defined below, indicate the severity of the hazard. The message after the signal word provides the information for preventing or avoiding the hazard.



#### **DANGER**

Immediate hazards that, if not avoided, **WILL** result in severe injury or death.



#### **WARNING**

Hazards that, if not avoided, **COULD** result in severe injury or death.



#### **CAUTION**

Hazards or unsafe practices that, if not avoided, **MAY** result in injury or property damage.

## IMPORTANT SAFETY INFORMATION FOR ITOOLCO MANHOLE ADAPTER



### **WARNING**

Read and understand all instructions and safety information in this manual before operating or servicing this tool.

FAILURE TO OBSERVE THESE WARNINGS CAN RESULT IN SEVERE INJURY OR DEATH



### **WARNING – PERSONAL SAFETY HAZARDS**

Only qualified persons should use iTOOLCo's Manhole Adapter. Wear eye protection and hard hat when using this tool.

Do not use this tool while tired or under the influence of drugs, alcohol, or medication.

Keep body parts and loose clothing away from moving parts.

Always follow operating procedures.

FAILURE TO OBSERVE THESE WARNINGS CAN RESULT IN SEVERE INJURY OR DEATH.



### **WARNING – ENTANGLEMENT HAZARD**

Do not operate this tool while wearing loose-fitting clothing.

Retain long hair.

Could pinch or crush a hand or body part.

FAILURE TO OBSERVE THESE WARNINGS CAN RESULT IN SEVERE INJURY OR DEATH.

**WARNING – TOOL USE HAZARDS**

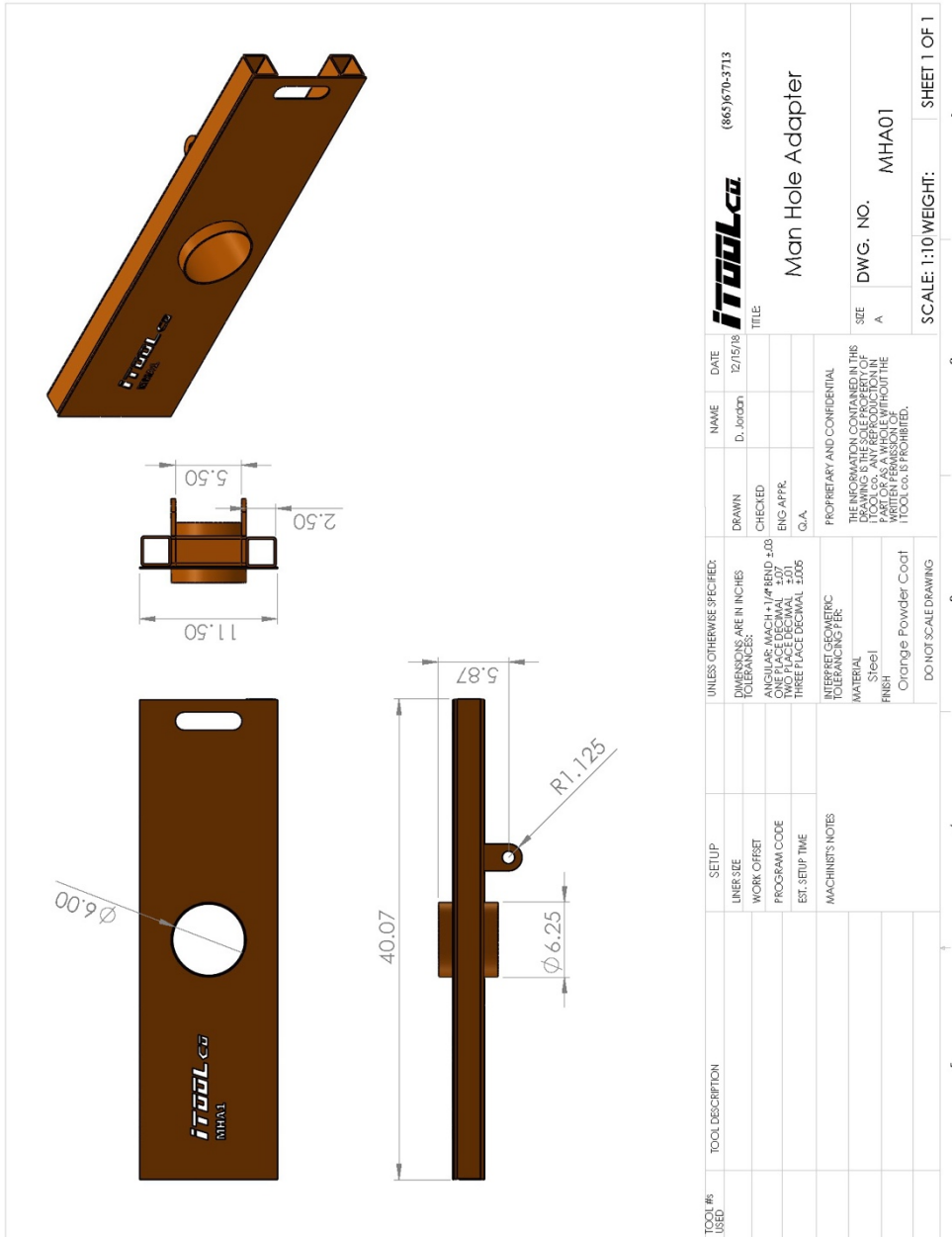
Use this tool for manufacturer's intended purpose only. Use other than that which is described in this manual can result in injury or property damage.

**FAILURE TO OBSERVE THESE WARNINGS CAN RESULT IN SEVERE INJURY OR DEATH.**



## DESCRIPTION AND IDENTIFICATION

iTOOLco Manhole Adapter is designed to carry wire and supplies for more efficient wire pulls. Tough all steel construction provides a secure platform that fits 18" – 36" manholes. Designed to work with every iTOOLco wire puller from the Cannon 6K™ up to the Cannon 12K™, the Manhole Adapter™ is also compatible with iTOOLco 24" Multi-Roller™ and 36" Multi-Roller™ and many other iTOOLco products.



## SET UP

1. Place tool over manhole and use 6" adapter to make pull.



**If using iTOOLCO Multi Roller, the following installation steps are applicable.**

2. Position in the Manhole Adapter approximately 6 inches from the open manhole with the dual anchor eyes upward. Fig. 1.
3. Connect the Multi Roller or other accessory (as needed) to the dual anchor eyes on the Manhole Adapter.
4. Secure with steel pin. Fig. 2.



Figure 1



Figure 2

5. Lift the Manhole Adapter using the convenient handle. As you lift and flip the Manhole Adapter over, lower the Multi Roller into the manhole. Fig. 3 and Fig. 4.



Figure 3



Figure 4



6. Attach any iTOOLCO wire puller to the Manhole Adapter with a 6" adapter. Fig. 5.



Figure 5



## LIMITED WARRANTY: ITOOLCO MANHOLE ADAPTER

iTOOLco warrants all new Manhole Adapters covered by this agreement, when properly used, to be free from defects in material and workmanship under normal use and service for which it is intended for a period of one year from date of delivery by the dealer. Date of delivery shall be the date product is placed in possession of the user. NORMAL WEAR FROM USE IS NOT PART OF THIS WARRANTY. This limited warranty is extended to the original user only and is not transferrable to, nor enforceable by any other person.

iTOOLco will replace free of charge any part(s) of the product found to be defective when such part(s) is returned to iTOOLco at the address shown below, freight prepaid. If the part(s) is found to be defective, iTOOLco will refund freight charges paid by you in returning the defective part(s) and prepay replacement part(s) freight charges. iTOOLco will not be responsible for more than replacement of any defective part(s) and standard freight charges (parcel post or UPS ground rate) of any part(s) found to be defective.

THIS IS THE EXCLUSIVE REMEDY. ITOOLCO SHALL NOT BE RESPONSIBLE OR LIABLE FOR ANY INCIDENTAL OR CONSEQUENTIAL DAMAGES RESULTING FROM ANY DEFECTS COVERED BY THIS WARRANTY OR ANY IMPLIED WARRANTY APPLICABLE TO THE PRODUCT INCLUDING, BUT NOT LIMITED TO, PROPERTY DAMAGE, LOSS OF USE OF PRODUCT, LOSS OF TIME, LOSS OF PROFITS, INCONVENIENCE, COMMERCIAL LOSS, LABOR COSTS, SERVICE TRIPS, AND MILEAGE.

Some states do not allow limitation on how long an implied warranty lasts, so the above limitation may not apply to you.

### Dealer/Distributor Warranty Claim Procedure

1. All warranty claims must be pre-approved by iTOOLco Warranty Department PRIOR to starting any warranty work. Warranty work performed without prior approval will not be considered.
2. All claims must be handled through dealer/distributor.
3. Written approval must be received from iTOOLco before return of merchandise. A Return Authorization is to be returned with the merchandise which is sent back.
4. All parts must be returned to iTOOLco at the address shown below, freight prepaid.
5. The serial number of the product and the date of delivery must accompany the part(s) being returned.
6. If the part(s) is found to have failed because of a defect in material or workmanship, replacement will be made on a no-charge basis, and the part(s) returned, freight prepaid. Standard freight charges (parcel post or UPS ground rate) incurred in returning the part(s) will be refunded.
7. For reasons of expediency, replacement and/or repair part(s) may be shipped as soon as possible and billed to the dealer/distributor. When part(s) is returned, if it is covered under warrant, credit will be issued for the part(s) and freight charges.
8. All parts found to be defective shall be retained by and shall become the property of iTOOLco. This warranty gives you specific legal rights, and you may also have other rights which vary from state to state.

Corporate Address: iTOOLco  
100 Meco Lane  
Oak Ridge, TN 37830

