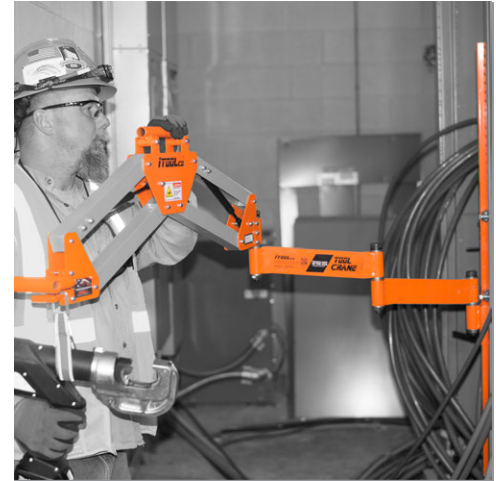


# TOOL CRANE™

ELIMINATE WORKER FATIGUE AND INCREASE PRODUCTIVITY

# iTOOLco.



25 lb. Weight Capacity

iTOOLco's Tool Crane™ is an ergonomic tool handling solution that increases both productivity and employee safety. It operates in tight spaces to position heavy tools, with no fatigue to worker. The Tool Crane™ is built for versatility and features 360° motion, multiple mounting options, and countless reach possibilities.

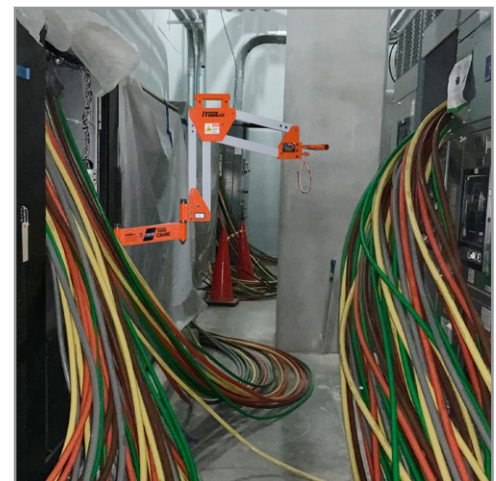


Mounts to iTOOLco Carts

## WE HAD OVER A THOUSAND TERMINATIONS TO DO AT A DATA CENTER.

The Tool Crane was the perfect tool for the job. I usually dread that part of the job because the tools are so heavy and hard to maneuver. We terminated the entire job in about half the time!

**Will Humbard**  
**President**  
**HEI**



Increase Productivity

**FASTER SAFER WORKSPACE**



# TOOL CRANE™

MAKE YOUR HAND TOOLS WEIGHTLESS

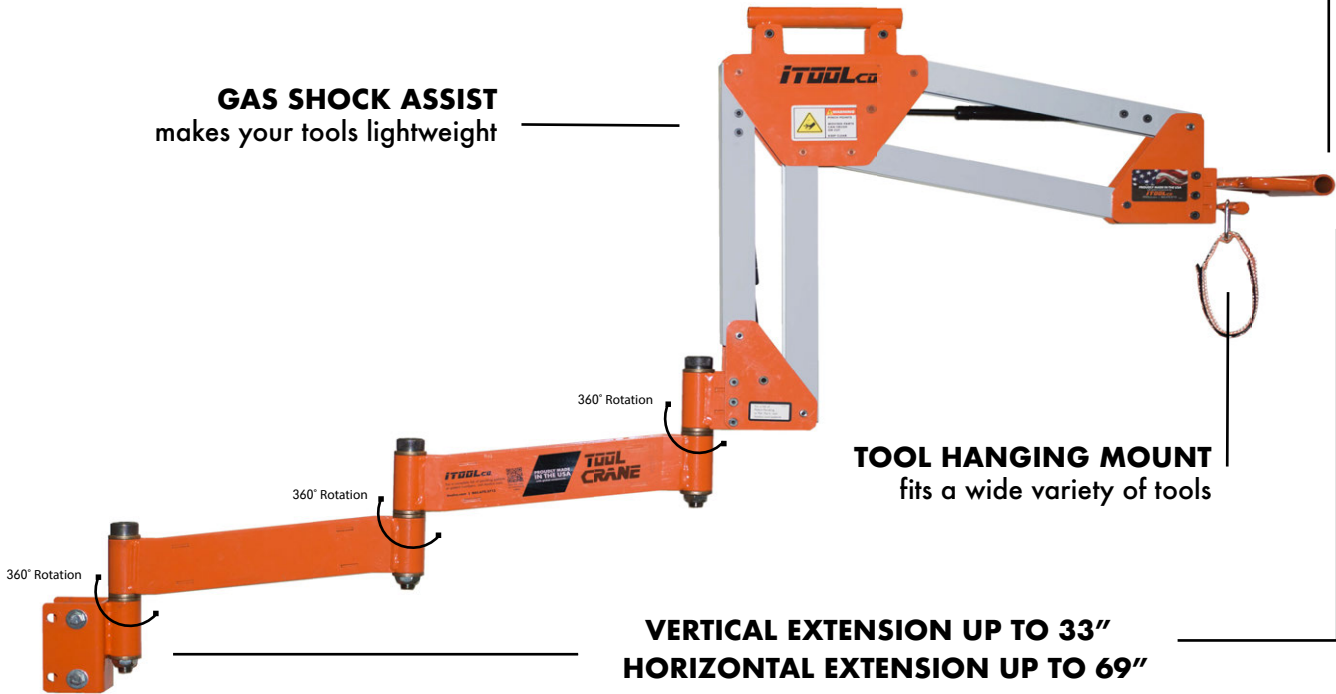
**iTOOLco.**

**CARRYING HANDLE**  
for jobsite mobility

**PIVOTING ARM EXTENSION**  
allows for precise positioning  
of tool

**GAS SHOCK ASSIST**  
makes your tools lightweight

**TOOL HANGING MOUNT**  
fits a wide variety of tools



**VERTICAL EXTENSION UP TO 33"**  
**HORIZONTAL EXTENSION UP TO 69"**

**FITS 2" x 2" SQUARE TUBING**  
for universal mounting applications



\*Includes Tool Crane™ Mounting Kit  
(SB-620)

Model	Description	Specifications
<b>TC2515</b>	Tool Crane™	69-1/2"L x 7"W x 40"H (extended) 18"L x 7"W x 40"H (collapsed) 37 lb.
<b>TB-620</b>	Tool Crane™ Panel Mount Kit	2"W x 25"L Perforated Tubing 7 lb.

UPC # 650270083489

**6**  
**YEAR**  
LIMITED  
WARRANTY

MADE IN THE  
**USA**  
WITH GLOBAL  
COMPONENTS

**Patent Pending**