



User's Guide



REAL BIG JACKS™

100 MECO LANE | OAK RIDGE, TN 37830 | 865.483.2040 | ITOOLCO.COM
© 2019 PROPERTY OF ITOOLCO



BEFORE OPERATION OF THIS TOOL, READ AND UNDERSTAND ALL OF THE INSTRUCTIONS AND SAFETY INFORMATION IN THIS MANUAL



Contents

SAFETY FIRST 3

SAFETY ALERT SYMBOLS..... 3

IMPORTANT SAFETY INFORMATION 4

DESCRIPTION AND IDENTIFICATION..... 5

SET UP AND OPERATION 7

LIMITED WARRANTY: ITOOLCO REAL BIG JACKS 12

SAFETY FIRST

Safety is essential in the use and maintenance of this tool. This instruction manual and any markings on the tool provide information for avoiding hazards and unsafe practices related to the use of this tool. Observe all of the safety information provided.

SAFETY ALERT SYMBOLS

This symbol is used to call your attention to hazards or unsafe practices that could result in injury or property damage. The three signal words, defined below, indicate the severity of the hazard. The message after the signal word provides the information for preventing or avoiding the hazard.



DANGER

Immediate hazards that, if not avoided, **WILL** result in severe injury or death.



WARNING

Hazards that, if not avoided, **COULD** result in severe injury or death.



CAUTION

Hazards or unsafe practices that, if not avoided, **MAY** result in injury or property damage.



WARNING – TOOL USE HAZARDS

Use this tool for manufacturer's intended purpose only. Use other than that which is described in this manual can result in injury or property damage.

IMPORTANT SAFETY INFORMATION



WARNING

Read and understand all instructions and safety information in this manual before operating or servicing this tool.

FAILURE TO OBSERVE THESE WARNINGS CAN RESULT IN SEVERE INJURY OR DEATH



WARNING – PERSONAL SAFETY HAZARDS

Only qualified persons should use iTOOLCo's Real Big Jacks.

Wear eye protection and hard hat when using this tool.

Do not use this tool while tired or under the influence of drugs, alcohol, or medication.

Keep body parts and loose clothing away from moving parts and pinch points.

Always follow operating procedures.

FAILURE TO OBSERVE THESE WARNINGS CAN RESULT IN SEVERE INJURY OR DEATH.



WARNING – ENTANGLEMENT HAZARD

Do not operate this tool while wearing loose-fitting clothing.

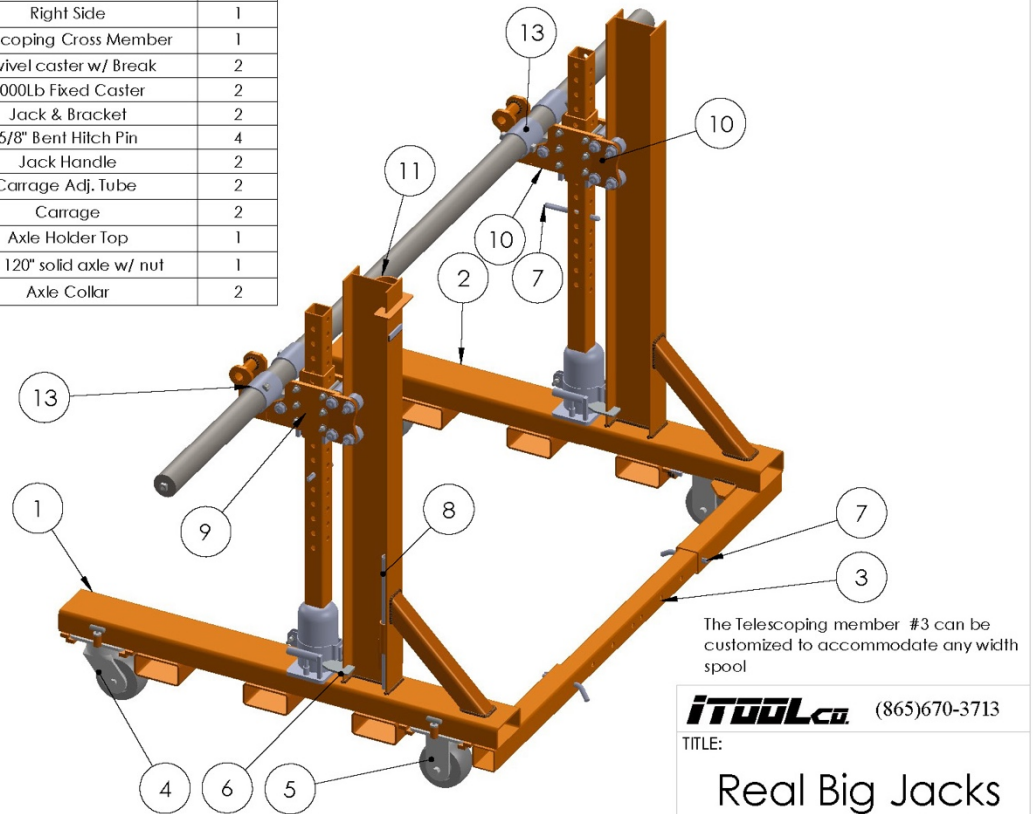
Retain long hair.

FAILURE TO OBSERVE THESE WARNINGS CAN RESULT IN SEVERE INJURY OR DEATH.

DESCRIPTION AND IDENTIFICATION

iTOOLCo Real Big Jacks™ jack stands are an innovative way to transport and feed heavy spools of wire. Made from US Steel, Real Big Jacks hold spools up to 20,000 lb.

ITEM NO.	PART NUMBER	DESCRIPTION	Default/ QTY.
1	RB-J-407	Left Side	1
2	RB-J-406	Right Side	1
3	RB-J-410	Telescoping Cross Member	1
4	SP-158	Swivel caster w/ Break	2
5	SP-159	2000Lb Fixed Caster	2
6	RB-J-413	Jack & Bracket	2
7	SP-185	5/8" Bent Hitch Pin	4
8	RB-J-417	Jack Handle	2
9	RB-J-404	Carrage Adj. Tube	2
10	RB-J-412	Carrage	2
11	RB-J-409	Axle Holder Top	1
12	AX09	RB-J 120" solid axle w/ nut	1
13	RB-J-615	Axle Collar	2



iTOOLCo (865)670-3713

TITLE:

Real Big Jacks

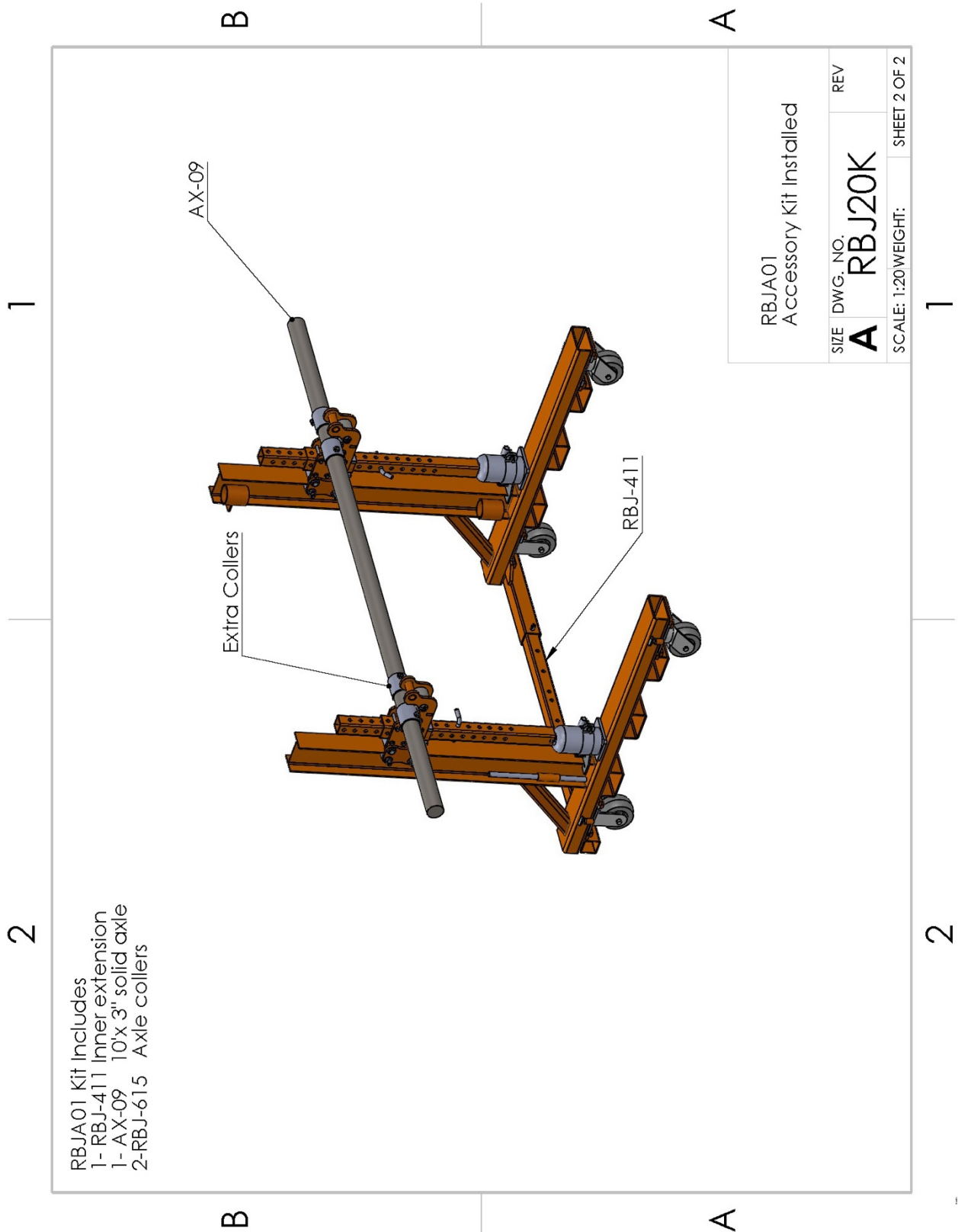
SIZE

A

DWG. NO.

RB-J20K

SCALE: 1:50 WEIGHT: 556Lbs. SHEET 1 OF 2



RBJA01 Kit Includes
1-RBJ-411 Inner extension
1-AX-09 10'x 3" solid axle
2-RBJ-615 Axle collers

RBJA01
Accessory Kit Installed

SIZE	DWG. NO.	REV	SHEET 2 OF 2
A	RBJ20K		
SCALE: 1:20		WEIGHT:	

REAL BIG JACKS™

MOVING HEAVY SPOOLS HAS NEVER BEEN EASIER

iTOOLco.



iTOOLco's Real Big Jacks™ are an innovative jack stand for transporting and feeding heavy spools of wire. Real Big Jacks™ feature fork lift slots for easy lifting and movement about the site and can accommodate spools up to 8' tall, 6' wide, and weighing 20,000 lb. with a uniquely patented design that allows these heavy spools to spin easily, a power feeding unit is typically not needed. Real Big Jacks™ can even go wider - up to 90" - with the new adapter kit.

WE USED THE iTOOLco REAL BIG JACKS ON 8 SPOOLS ON 12 SPOOLS EACH WEIGHING ABOUT 8000 LB. EACH.

The jacks were easy to use and the spools moved right into place with the heavy duty casters. The wire paid off the spools with no effort, the puller actually pulled the wire off the spools. Great product for spools this size.

Gareth James
Interstates Construction

Watch Video



Lifting can be done from all four sides with forklift



Pull from almost anywhere, including a trailer.



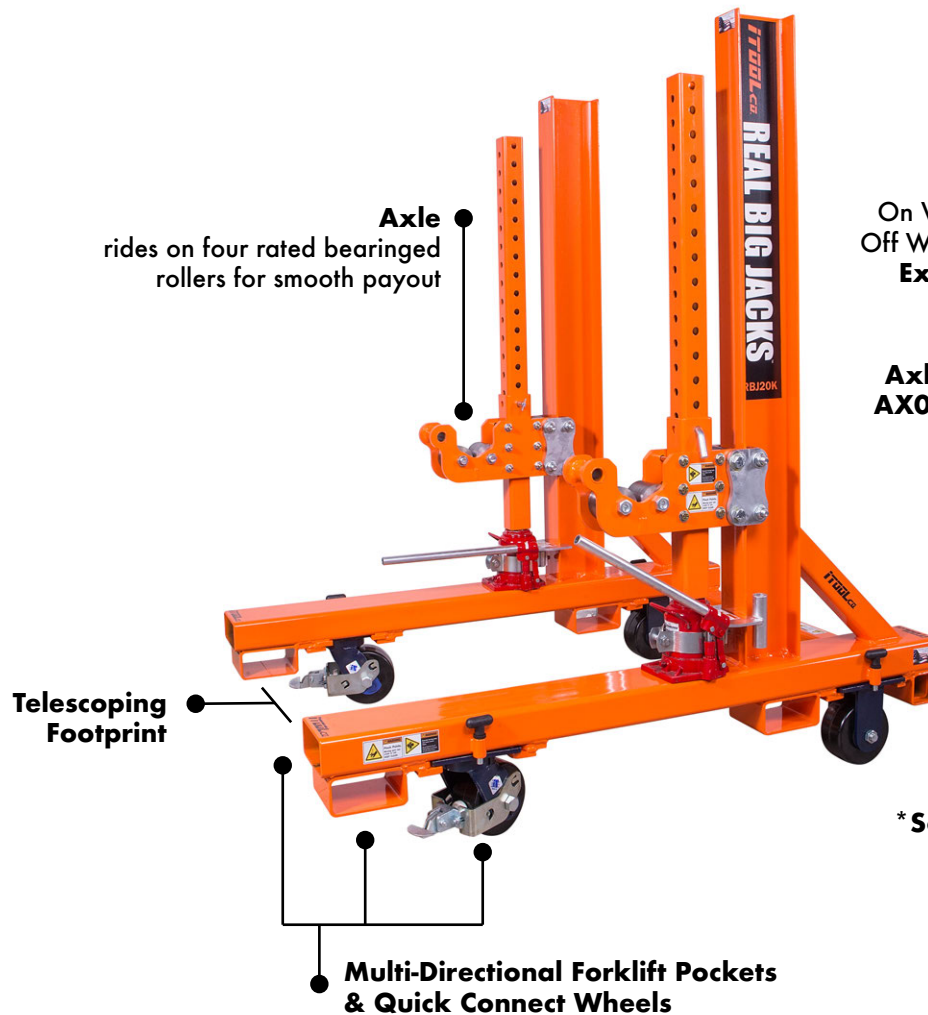
Reels spin so freely there is rarely a need for a wire feeder

FASTER SAFER WORKSPACE

REAL BIG JACKS™

LOAD AND RELOAD WITHOUT A FORKLIFT

iTOOLco.



Spool Size Specifications:

On Wheels - 84"H x 60"W at 10,000 lb.

Off Wheels - 120"H x 60"W at 20,000 lb.

Expansion Kit Available (RBJA01)

Axles Available (Sold Separately):

AX04 - 10,000 lb. 7'L, 3" O.D., 1.5" I.D.

AX09 - 20,000 lb. 10'L, 3" Dia.

(AX09 Included in RBJA01 Kit)

*** Sold as shown**

Model	Description	Specifications
RBJ20K	Real Big Jacks™	58"L x 44"- 66"W x 69" H on wheels, 66" H off wheels. 560 lb. Includes (2) Axle Collars

UPC# 617209996029

Add the Accessory Pack to Increase Capabilities (Pack Sold Separately):

RBJA01	Real Big Jacks™ Adapter Kit (not pictured)	Includes 72" inner telescoping tube to extend the RBJ20K open to a 90" opening between upright carriages (Max spool width 88") 10' Solid 3" axle with an eye bolt for pulling the axle through the large spool
RBJ-413	Set of 2 Collars	4"L x 3.125" I.D.
AX09	Real Big Jacks™ Axle	10'L, 3" Solid Bar, 250 lb.
RBJ-411	Telescoping Cross Member	72"L x 2.5" x 2.5", .1875 Wall

UPC# 650270083625

Patented



SET UP AND OPERATION

1. Measure the width of the spool.

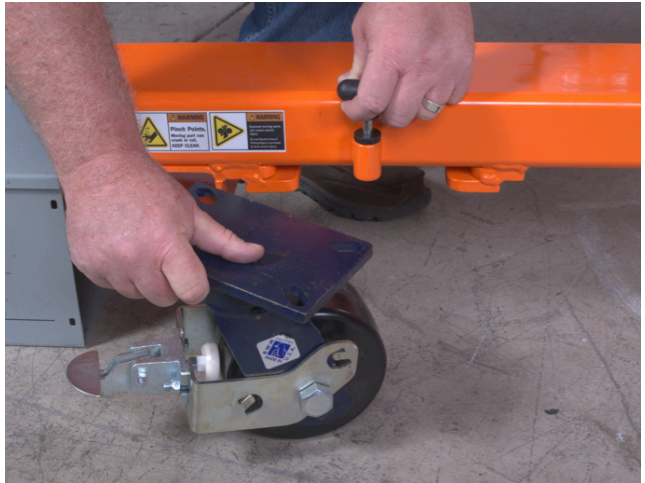


2. Adjust width of the Real Big Jacks a minimum of 10 inches wider than width of spool as shown here. Re-insert hitch pin.

Note: For wider spools remove telescoping cross member and install larger member as needed (sold with RBJA01 accessory kit).



3. Casters rated for combined 10,000 pound load maximum. Remove casters for spools exceeding 10,000 pounds.
4. Pull pop pin to slide casters in or out.



5. With bottle jacks collapsed, move Real Big Jacks into position, with the roller cage set just below the center arbor hole of the spool to be lifted as shown.



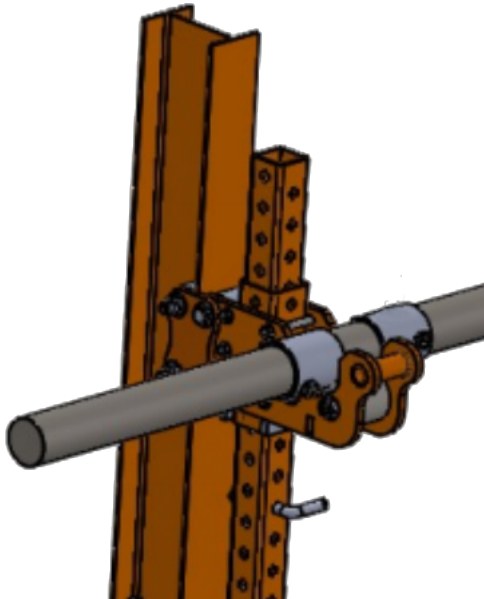
ROLLER CAGE



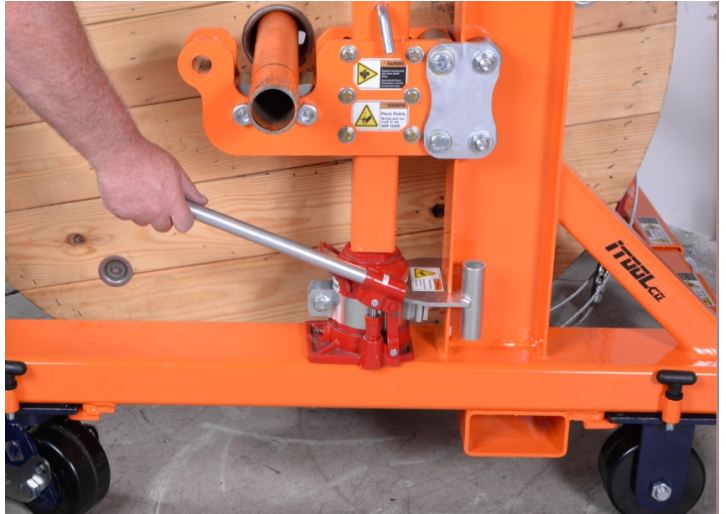
6. Insert AX04 for loads 10,000 pounds and less.
7. Insert AX09 for loads greater than 10,000 pounds.

Note: A weld nut is provided on the AX09 end for an eye bolt to be used for pulling AX09 through spool.

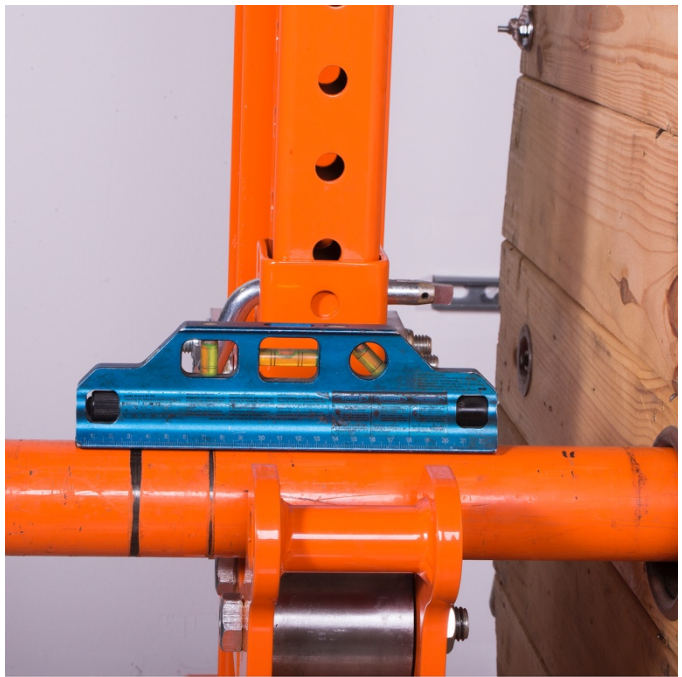
Install axle collars on each side of the jack (two per side one next to spool and one outside of roller cage assembly, so roller cage is between both collars).



8. Use bottle jack handle to lift spool off ground.



9. Use a torpedo level to level up axle and spool.



COLLAR PLACEMENT

10. Move Real Big Jacks into position. Lock wheels as shown.





LIMITED WARRANTY: ITOOLCO REAL BIG JACKS

iTOOLco warrants all new Real Big Jacks covered by this agreement, when properly used, to be free from defects in material and workmanship under normal use and service for which it is intended for a period of one year from date of delivery by the dealer. Date of delivery shall be the date product is placed in possession of the user. NORMAL WEAR FROM USE IS NOT PART OF THIS WARRANTY. This limited warranty is extended to the original user only and is not transferrable to, nor enforceable by any other person.

iTOOLco will replace free of charge any part(s) of the product found to be defective when such part(s) is returned to iTOOLco at the address shown below, freight prepaid. If the part(s) is found to be defective, iTOOLco will refund freight charges paid by you in returning the defective part(s) and prepay replacement part(s) freight charges. iTOOLco will not be responsible for more than replacement of any defective part(s) and standard freight charges (parcel post or UPS ground rate) of any part(s) found to be defective.

THIS IS THE EXCLUSIVE REMEDY. ITOOLCO SHALL NOT BE RESPONSIBLE OR LIABLE FOR ANY INCIDENTAL OR CONSEQUENTIAL DAMAGES RESULTING FROM ANY DEFECTS COVERED BY THIS WARRANTY OR ANY IMPLIED WARRANTY APPLICABLE TO THE PRODUCT INCLUDING, BUT NOT LIMITED TO, PROPERTY DAMAGE, LOSS OF USE OF PRODUCT, LOSS OF TIME, LOSS OF PROFITS, INCONVENIENCE, COMMERCIAL LOSS, LABOR COSTS, SERVICE TRIPS, AND MILEAGE.

Some states do not allow limitation on how long an implied warranty lasts, so the above limitation may not apply to you.

Dealer/Distributor Warranty Claim Procedure

1. All warranty claims must be pre-approved by iTOOLco Warranty Department PRIOR to starting any warranty work. Warranty work performed without prior approval will not be considered.
2. All claims must be handled through dealer/distributor.
3. Written approval must be received from iTOOLco before return of merchandise. A Return Authorization is to be returned with the merchandise which is sent back.
4. All parts must be returned to iTOOLco at the address shown below, freight prepaid.
5. The serial number of the product and the date of delivery must accompany the part(s) being returned.
6. If the part(s) is found to have failed because of a defect in material or workmanship, replacement will be made on a no-charge basis, and the part(s) returned, freight prepaid. Standard freight charges (parcel post or UPS ground rate) incurred in returning the part(s) will be refunded.
7. For reasons of expediency, replacement and/or repair part(s) may be shipped as soon as possible and billed to the dealer/distributor. When part(s) is returned, if it is covered under warrant, credit will be issued for the part(s) and freight charges.
8. All parts found to be defective shall be retained by and shall become the property of iTOOLco. This warranty gives you specific legal rights, and you may also have other rights which vary from state to state.

Corporate Address: iTOOLco
100 Meco Lane
Oak Ridge, TN 37830

