

ALL JACK™

LIFT AND HOLD YOUR WORKPIECE IN PLACE

iTOOLco.



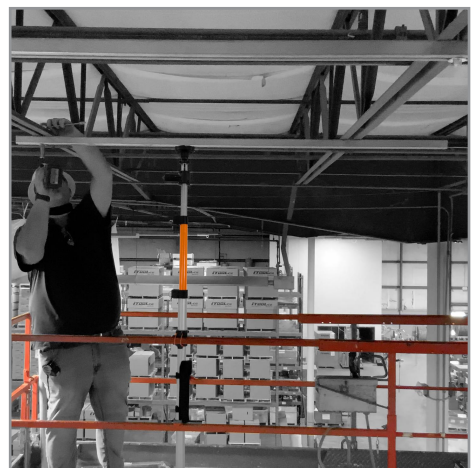
Holds workpiece in place at various angles



One handed gas shock operation

Increase productivity and decrease fatigue using iTOOLco's All Jack™. Install pipe, lights, cabinets, drywall, temporary dust barriers and much more with this innovative jack designed to lift and support the weight of your workpiece while you anchor it into position.

High ceilings and ladder work are not a problem for this dynamic tool. Reach from 58" to a staggering height of 13'6". The industrial gas shock ensures a snug, stable support that stays in place while you complete the installation. Once your workpiece is secured into place, simply remove the All Jack™ by releasing the shock. More powerful than a typical support pole, the All Jack's gas shock can handle your most challenging jobs.



Perfect for overhead & lift work

Watch Video



FASTER SAFER WORKSPACE

iTOOLco.com / 865-670-3713

ALL JACK™

LIFT AND HOLD YOUR WORKPIECE IN PLACE

iTOOLco.



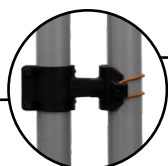
GAS SHOCK ENGAGEMENT LEVER
for quick one handed lift operation up to 20 lb.



VERSATILE HEAD WITH BUILT IN SCREW JACK,
Pre-drilled holes for field customization & a built in V-groove to capture pipe



LOCKING POINTS FOR ADJUSTMENTS
when locked can be used as a screw jack to support 175 lbs.



EXTENSION HOLDER
is also universal mounting bracket for mounting to ladders or lifts



QUICKLY ADJUST TO MEET YOUR ANGLE

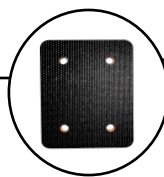
47" EXTRA EXTENSION STORES ON CART



Includes Support Rods, Extra Storage Bands & Carrying Bag



SUPPORT RODS FOR DOME FIXTURES



ANTI SLIP PADDING
with anchoring holes in base

* Sold as shown

Model	Description	Specifications
AJ01	All Jack™	58"H x 6"W x 8"L (Collapsed) 13'6"H x 6"W x 8"L (Extended) 25 lb.

UPC# 650270084431

6
YEAR
LIMITED
WARRANTY

Patent Pending