



# User's Guide



## **GK UTILITY PULLER™**

100 MECO LANE | OAK RIDGE, TN 37830 | 865.670.3713 | ITOOLCO.COM  
© 2019 PROPERTY OF ITOOLCO



**BEFORE OPERATION OF THIS TOOL, READ AND UNDERSTAND ALL OF THE INSTRUCTIONS AND SAFETY INFORMATION IN THIS MANUAL**



**Contents**

SAFETY FIRST ..... 3

SAFETY ALERT SYMBOLS..... 3

IMPORTANT SAFETY INFORMATION ..... 4

DESCRIPTION AND IDENTIFICATION..... 6

SET UP AND OPERATION ..... 10

.....**Error! Bookmark not defined.**

LIMITED WARRANTY: ITOOLCO 6K UTILITY PULLER ..... 14

## SAFETY FIRST

Safety is essential in the use and maintenance of this tool. This instruction manual and any markings on the tool provide information for avoiding hazards and unsafe practices related to the use of this tool. Observe all of the safety information provided.

### SAFETY ALERT SYMBOLS

This symbol is used to call your attention to hazards or unsafe practices that could result in injury or property damage. The three signal words, defined below, indicate the severity of the hazard. The message after the signal word provides the information for preventing or avoiding the hazard.



#### **DANGER**

Immediate hazards that, if not avoided, **WILL** result in severe injury or death.



#### **WARNING**

Hazards that, if not avoided, **COULD** result in severe injury or death.



#### **CAUTION**

Hazards or unsafe practices that, if not avoided, **MAY** result in injury or property damage.

## IMPORTANT SAFETY INFORMATION



### **WARNING**

Read and understand all instructions and safety information in this manual before operating or servicing this tool.

Also read the instruction manual supplied with your drill.

FAILURE TO OBSERVE THESE WARNINGS CAN RESULT IN SEVERE INJURY OR DEATH



### **WARNING – PERSONAL SAFETY HAZARDS**

Only qualified persons should use iTOOLco 6K Utility Puller.

Wear eye protection and hard hat when using this tool.

Do not use this tool while tired or under the influence of drugs, alcohol, or medication.

Keep body parts and loose clothing away from moving parts.

Always follow operating procedures.

FAILURE TO OBSERVE THESE WARNINGS CAN RESULT IN SEVERE INJURY OR DEATH.



### **WARNING – ELECTRICAL SHOCK HAZARDS**

Do not expose power tools to rain or wet conditions. Water entering a power tool can increase the risk of electric shock.

Plug into a (GFCI) ground fault interrupted circuit outlet only.

Use a 20 Amp 120 Volt extension cord no more than 100 feet in length. Maintain proper care of power cords. Do not use the

cord to carry the tool or pull the plug from an outlet. Replace

damaged cords immediately. Damaged cords can increase the

risk of electrical shock. Do not use this tool near live circuits.

Shut off and lock out power when working near existing

circuits. FAILURE TO OBSERVE THESE WARNINGS CAN RESULT IN SEVERE INJURY OR DEATH.

**WARNING – ENTANGLEMENT HAZARD**

Do not operate this tool while wearing loose-fitting clothing.

Retain long hair.

Keep hands away from pullers capstan. Rope at capstan can pinch or crush a hand or body part.

FAILURE TO OBSERVE THESE WARNINGS CAN RESULT IN SEVERE INJURY OR DEATH.

**WARNING – TOOL USE HAZARDS**

Use this tool for manufacturer's intended purpose only. Use other than that which is described in this manual can result in injury or property damage.

Do not use nylon or polypropylene rope. Extreme force can be stored when rope stretches. Inspect all aspects of the wire pull to ensure safety.

Inspect all aspects of the wire pull to ensure safety.

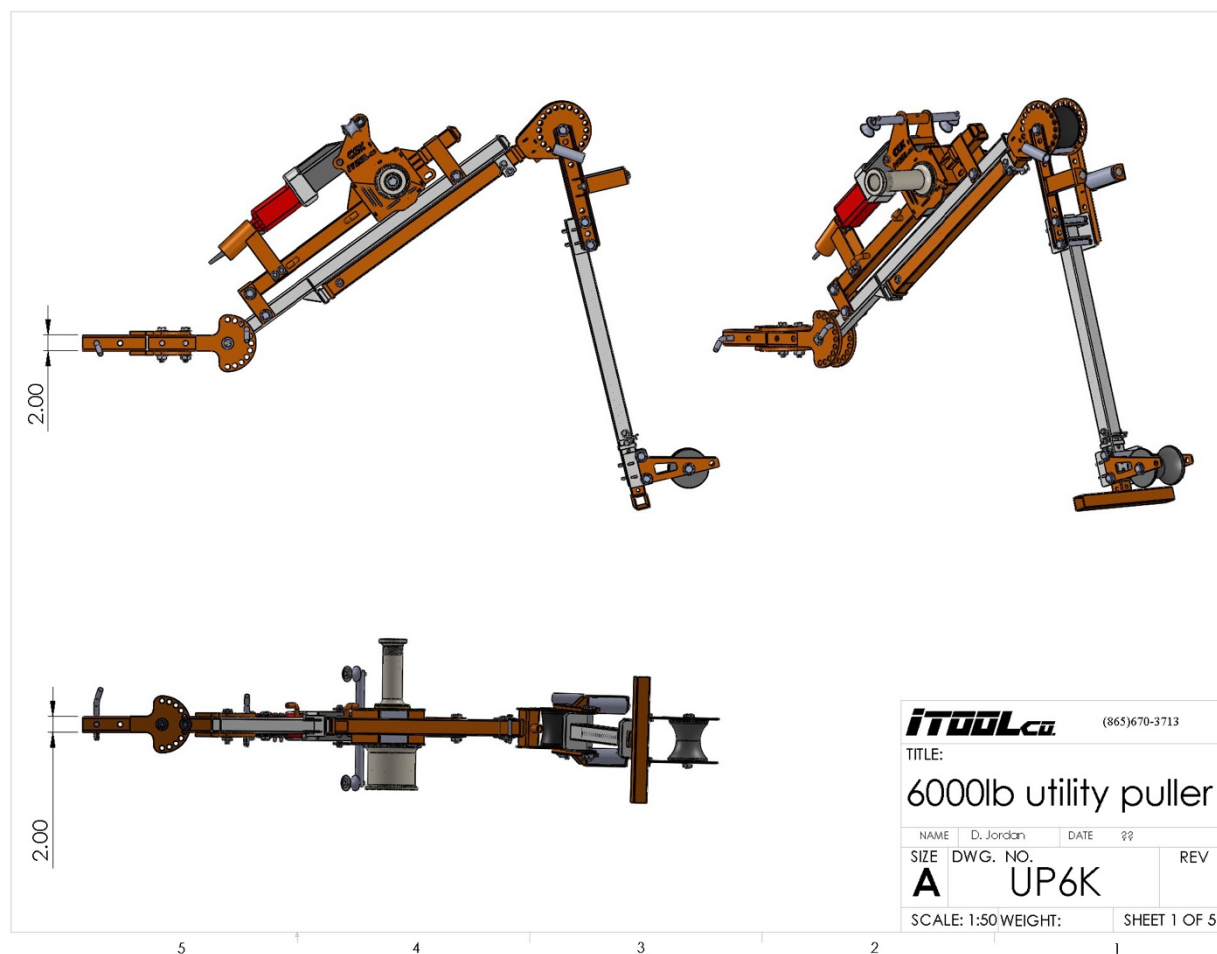
Only qualified personnel should use pulling equipment.

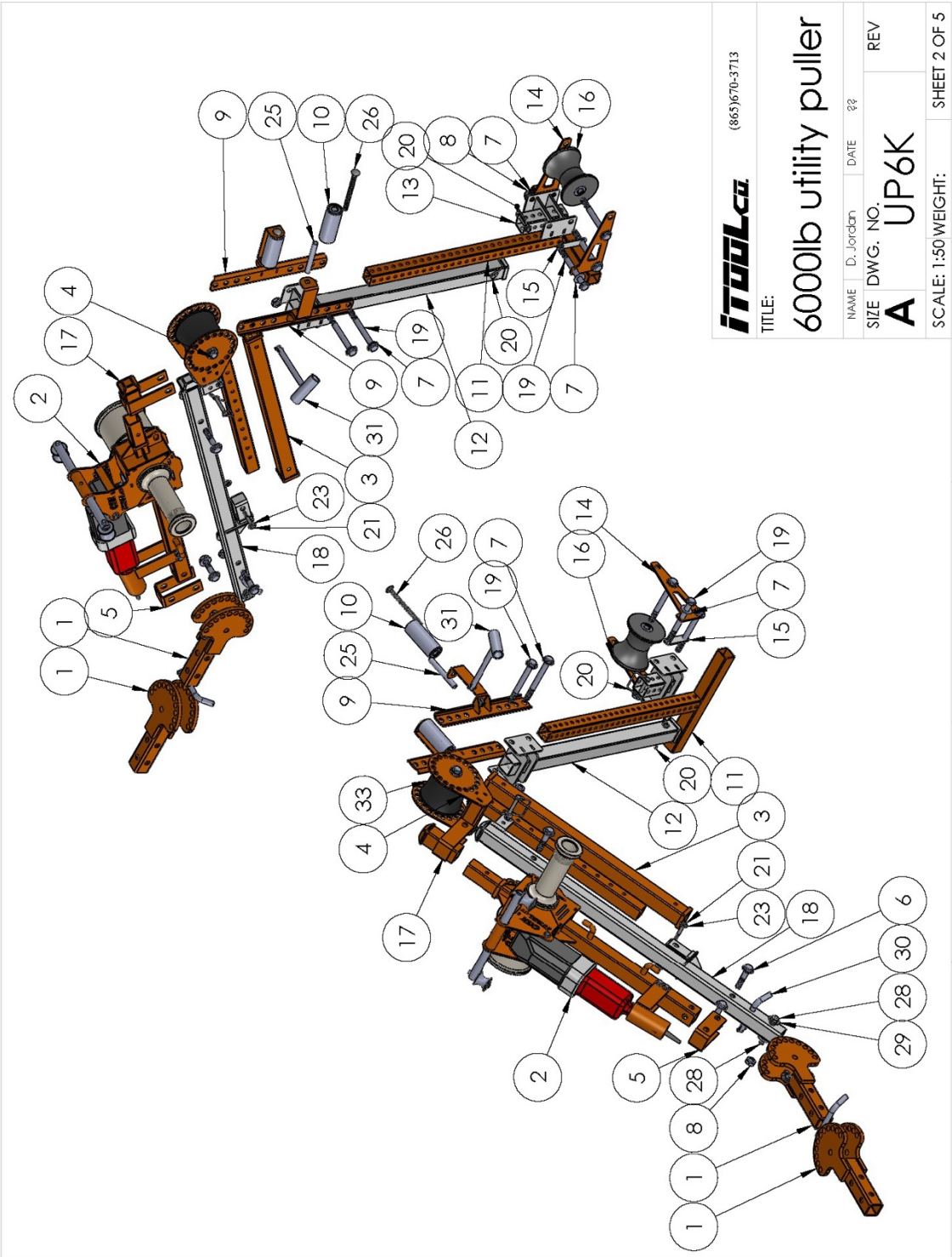
Do not use the cable puller as a hoist or winch. The cable puller cannot lower a load. The load may fall and cause serious injury or death.

FAILURE TO OBSERVE THESE WARNINGS CAN RESULT IN SEVERE INJURY OR DEATH.

## DESCRIPTION AND IDENTIFICATION

The iTOOLco 6K Utility Puller is a 6,000 lb. cable puller intended to pull small to medium wire through conduit. Designed for faster set-up, the puller's articulating receiver adapter can be positioned 180 degrees vertically or horizontally at the precise angle needed to get the job done.





<b>IToolCo</b> (865)670-3713		TITLE: 6000lb utility puller	
NAME: D. Jordan	DATE: ??	REV: A	UP6K
SIZE: DWG. NO.	SCALE: 1:50 WEIGHT: SHEET 2 OF 5		



ITEM NO.	PART NUMBER	DESCRIPTION	QTY.
1	C6KR-405	Receiver Hitch Pivot	2
2	C6K-602	Lower Base Unit	1
3	C6K-409.2	Outer Extensionn w/ weld on sleeves	1
4	C6K-405	Inner Telescoping Tube	1
5	C6KR-407	Coated Mount Bracket	1
6	HW-173	5/8" 11t x 3.25" Bolt	3
7	HW-176	5/8" SAE Washer	20
8	Hw-182	5/8" nyloc nut	13
9	C6KR-412	Side arm with Roller Mount	2
10	SP-115	Alum Roller w/Bearings	2
11	C6KR-414	Extendable T Foot	1
12	C6KR-415	Front Extension Bar	1
13	C6KR-416	Slide on attachment bracket	1
14	C6KR-417	5" Roller Bracket	2
15	C6KR-222	2 Hole Spacer	2
16	SP-142	5" Roller	1
17	C6KR-408	Front Mount Bracket	1
18	C6KR-406	Main Tube Assembly	1
19	HW-175	5/8" 11t x 6.5" Bolt	7
20	HW-350 Deep sq retainer .375 pin	3/8" Pin with large sq retainer	3
21	HW-136	3/8 16T x 2.5" Long Hex Bolt	1
22	HW-142	.375x 16 x 3. bolt	1
23	HW-146	3/8" Flat Washer	4
24	HW-150	3/8" Nylock Nut	2
25	TR-114	Bearing Sleeve 5-1/16" .625 x .058w	2
26	HW-287	1/2" x 6" Carriage Bolt	2
27	HW-168	1/2" 13t Nyloc nut	2
28	HW-351	5/8" 11T x 4"L Hex Bolt	3
29	HW-176	5/8" SAE Washer	10
30	SP-185	5/8" Bent Hitch Pin	2
31	SP-182	5/8" Hitch Pin w/ Flashlight Holder	1
32	C6K-406.2	New Style Main Roller	1
33	SP-107	Fron & Main Roller	2
34	SP-114	5/8" ID 1-3/8"OD Bearing	2
35	SP-001.2	Pull Pop Pin	1
36	SP-149	Interior Roller Bearing	2



(865)670-3713

TITLE:

6000lb utility puller

NAME	D. Jordan	DATE	??
SIZE	DWG. NO.	REV	
A	UP6K		
SCALE: 1:50	WEIGHT:	SHEET 3 OF 5	

5

4

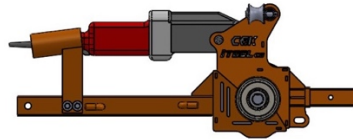
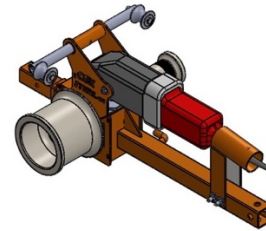
3

2

1



ITEM NO.	PART NUMBER	DESCRIPTION	QTY.
1	C6K-403	Bearbox Bottom Frame	1
2	C6K-410	Rope Roller Tube	1
3	C6K-125	8.8"- 4.5" BMA-02	1
4	SP-103	Output Shaft	1
5	GB	Gearbox	1
6	C6K-126M	High Speed Capstan	1
7	SP-104	6K Motor Coupling	1
8	SP-106	Capstan Bearing	1
9	C6K-404	Gearbox Top	1
10	SP-141	Milwaukee super Hawg 1680-20	1
11	C6K-309	Handle Motor Mount	1
12	HW-200	1" Flat Washer	1
13	HW-199	1-1/8" Nut	2
14	SP-108	Capture Bushing	2
15	HW-150	3/8" nyloc nut	2
16	HW-142,HW-146,HW-150	3/8"x16t x 3" bolt Washer and Nyloc nut	2
17	SP-180	1/4" Pin w/ retainer	1
18	SP-112	Key Stock	1
19	93070A171	M8 low head 6K gearbox mount bolts	16
20	SP-105	6K Aluminum Capstan Spacer	1



**IToolco** (865)670-3713

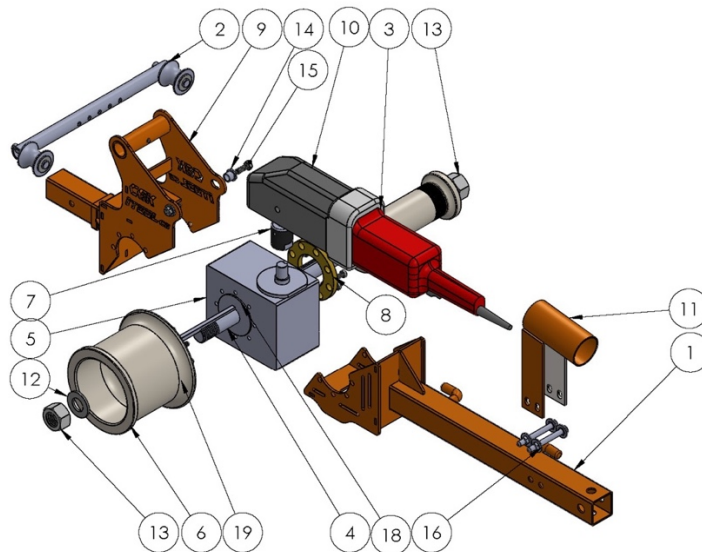
TITLE:

C6K-602 Lower Unit

**PROPRIETARY AND CONFIDENTIAL**  
THE INFORMATION CONTAINED IN THIS  
DRAWING IS THE SOLE PROPERTY OF  
IToolco. ANY REPRODUCTION IN  
PART OR AS A WHOLE WITHOUT THE  
WRITTEN PERMISSION OF  
IToolco. IS PROHIBITED.

SIZE DWG. NO. REV  
**A** UP6K  
Date WEIGHT: SHEET 4 OF 5

5 4 3 2 1



**IToolco** (865)670-3713

TITLE:

**PROPRIETARY AND CONFIDENTIAL**  
THE INFORMATION CONTAINED IN THIS  
DRAWING IS THE SOLE PROPERTY OF  
IToolco. ANY REPRODUCTION IN  
PART OR AS A WHOLE WITHOUT THE  
WRITTEN PERMISSION OF  
IToolco. IS PROHIBITED.

SIZE DWG. NO. REV  
**A** UP6K  
Date WEIGHT: SHEET 5 OF 5

5 4 3 2 1



## SET UP AND OPERATION

### Step 1

Remove both pins from the articulating plates and insert motor unit into 2" receiver stock.



### Step 2

Tip motor unit up and insert pin.



**Step 3**

Insert pin as shown then lift and insert main knuckle arm.

**Step 4.1**

Insert the lower extension and roller.

**Step 4.2**

Tip puller to upright and collapsed position and replace all pins.

**CAUTION for transporting puller:**

**Do not exceed 25 MPH.**

**Puller must be removed for highway travel.**







#### Step 5.1

Loosen center nut and bolt. Remove bolt allowing unit to pivot.



#### Step 6

Position boom to desired direction and tighten bolts.



#### Step 7.1

Align front arm be in line with the direction of the pull.

**Note:** The rope rollers are to help guide the rope and are not intended for heavy side loads.



**Step 7.2**

Place rope between rope guide rollers and begin to pull

**Step 8 - Underground Pulls**

Position extensions to achieve desired pull angle.

**Note: The roller should be positioned over the conduit being pulled through.**





#### Step 8.2

The front extension foot should be placed as close as possible to the conduit being pulled.



#### Step 9

Begin pull.





## LIMITED WARRANTY: ITOOLCO 6K UTILITY PULLER

iTOOLCo warrants all new 6K Utility Pullers covered by this agreement, when properly used, to be free from defects in material and workmanship under normal use and service for which it is intended for a period of one year from date of delivery by the dealer. Date of delivery shall be the date product is placed in possession of the user. NORMAL WEAR FROM USE IS NOT PART OF THIS WARRANTY. This limited warranty is extended to the original user only and is not transferrable to, nor enforceable by any other person.

iTOOLCo will replace free of charge any part(s) of the product found to be defective when such part(s) is returned to iTOOLCo at the address shown below, freight prepaid. If the part(s) is found to be defective, iTOOLCo will refund freight charges paid by you in returning the defective part(s) and prepay replacement part(s) freight charges. iTOOLCo will not be responsible for more than replacement of any defective part(s) and standard freight charges (parcel post or UPS ground rate) of any part(s) found to be defective.

THIS IS THE EXCLUSIVE REMEDY. ITOOLCO SHALL NOT BE RESPONSIBLE OR LIABLE FOR ANY INCIDENTAL OR CONSEQUENTIAL DAMAGES RESULTING FROM ANY DEFECTS COVERED BY THIS WARRANTY OR ANY IMPLIED WARRANTY APPLICABLE TO THE PRODUCT INCLUDING, BUT NOT LIMITED TO, PROPERTY DAMAGE, LOSS OF USE OF PRODUCT, LOSS OF TIME, LOSS OF PROFITS, INCONVENIENCE, COMMERCIAL LOSS, LABOR COSTS, SERVICE TRIPS, AND MILEAGE.

Some states do not allow limitation on how long an implied warranty lasts, so the above limitation may not apply to you.

### Dealer/Distributor Warranty Claim Procedure

1. All warranty claims must be pre-approved by iTOOLCo Warranty Department PRIOR to starting any warranty work. Warranty work performed without prior approval will not be considered.
2. All claims must be handled through dealer/distributor.
3. Written approval must be received from iTOOLCo before return of merchandise. A Return Authorization is to be returned with the merchandise which is sent back.
4. All parts must be returned to iTOOLCo at the address shown below, freight prepaid.
5. The serial number of the product and the date of delivery must accompany the part(s) being returned.
6. If the part(s) is found to have failed because of a defect in material or workmanship, replacement will be made on a no-charge basis, and the part(s) returned, freight prepaid. Standard freight charges (parcel post or UPS ground rate) incurred in returning the part(s) will be refunded.
7. For reasons of expediency, replacement and/or repair part(s) may be shipped as soon as possible and billed to the dealer/distributor. When part(s) is returned, if it is covered under warrant, credit will be issued for the part(s) and freight charges.
8. All parts found to be defective shall be retained by and shall become the property of iTOOLCo. This warranty gives you specific legal rights, and you may also have other rights which vary from state to state.

Corporate Address: iTOOLCo  
100 Meco Lane  
Oak Ridge, TN 37830

