



User's Guide



CANNON iTK™

100 MECO LANE | OAK RIDGE, TN 37830 | 865.483.2040 | ITOOLCO.COM
© 2016 PROPERTY OF ITOOLCO



**BEFORE OPERATION OF THIS TOOL, READ AND
UNDERSTAND ALL OF THE INSTRUCTIONS AND
SAFETY INFORMATION IN THIS MANUAL**



Contents

| | |
|---|----|
| SAFETY FIRST | 3 |
| SAFETY ALERT SYMBOLS | 3 |
| IMPORTANT SAFETY INFORMATION..... | 4 |
| DESCRIPTION AND IDENTIFICATION | 6 |
| SET UP AND OPERATION | 12 |
| Assembly | 12 |
| Attaching Conduit Adapters..... | 13 |
| Underground Wire Pull | 14 |
| Overhead Wire Pull | 15 |
| Pulling Out Extra Wire..... | 16 |
| Receiver Hitch Wire Pulls | 16 |
| Maintenance | 16 |
| Specifications | 16 |
| LIMITED WARRANTY: ITOOLCO CANNON 10K..... | 17 |

SAFETY FIRST

Safety is essential in the use and maintenance of this tool. This instruction manual and any markings on the tool provide information for avoiding hazards and unsafe practices related to the use of this tool. Observe all of the safety information provided.

SAFETY ALERT SYMBOLS

This symbol is used to call your attention to hazards or unsafe practices that could result in injury or property damage. The three signal words, defined below, indicate the severity of the hazard. The message after the signal word provides the information for preventing or avoiding the hazard.



DANGER

Immediate hazards that, if not avoided, **WILL** result in severe injury or death.



WARNING

Hazards that, if not avoided, **COULD** result in severe injury or death.



CAUTION

Hazards or unsafe practices that, if not avoided, **MAY** result in injury or property damage.

IMPORTANT SAFETY INFORMATION



WARNING

Read and understand all instructions and safety information in this manual before operating or servicing this tool.
Also read the instruction manual supplied with your drill.
FAILURE TO OBSERVE THESE WARNINGS CAN RESULT IN SEVERE INJURY OR DEATH



WARNING – PERSONAL SAFETY HAZARDS

Only qualified persons should use iTOOLco Cannon 10K.
Wear eye protection and hard hat when using this tool.
Do not use this tool while tired or under the influence of drugs, alcohol, or medication.
Keep body parts and loose clothing away from moving parts.
Always follow operating procedures.
FAILURE TO OBSERVE THESE WARNINGS CAN RESULT IN SEVERE INJURY OR DEATH.



WARNING – ELECTRICAL SHOCK HAZARDS

Do not expose power tools to rain or wet conditions. Water entering a power tool can increase the risk of electric shock.
Plug into a (GFCI) ground fault interrupted circuit outlet only.
Use a 20 Amp 120 Volt extension cord no more than 100 feet in length. Maintain proper care of power cords. Do not use the cord to carry the tool or pull the plug from an outlet. Replace damaged cords immediately. Damaged cords can increase the risk of electrical shock. Do not use this tool near live circuits.
Shut off and lock out power when working near existing circuits. FAILURE TO OBSERVE THESE WARNINGS CAN RESULT IN SEVERE INJURY OR DEATH.

**WARNING – ENTANGLEMENT HAZARD**

Do not operate this tool while wearing loose-fitting clothing.
Retain long hair.

Keep hands away from pullers capstan. Rope at capstan can pinch or crush a hand or body part.

FAILURE TO OBSERVE THESE WARNINGS CAN RESULT IN SEVERE INJURY OR DEATH.

**WARNING – TIPPING HAZARD**

Use the same size adapter with conduit. Lock adapter under conduit nut. Disassemble when not in use. FAILURE TO OBSERVE THESE WARNINGS CAN RESULT IN SEVERE INJURY OR DEATH.

**WARNING – TOOL USE HAZARDS**

Use this tool for manufacturer's intended purpose only. Use other than that which is described in this manual can result in injury or property damage.

Do not use nylon or polypropylene rope, extreme force can be stored when rope stretches. Inspect all aspects of the wire pull to ensure safety.

Inspect all aspects of the wire pull to ensure safety.

Only qualified personnel should use pulling equipment.

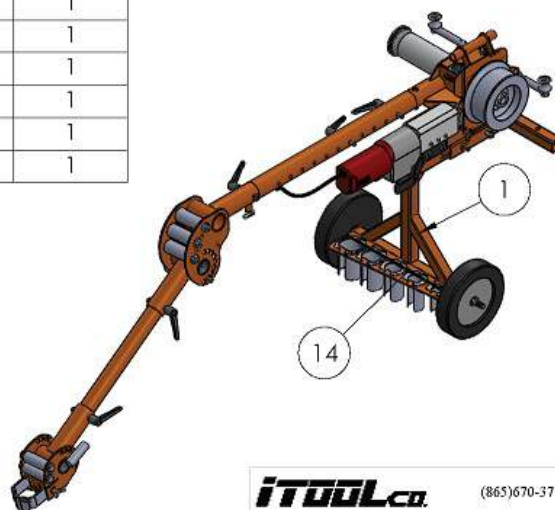
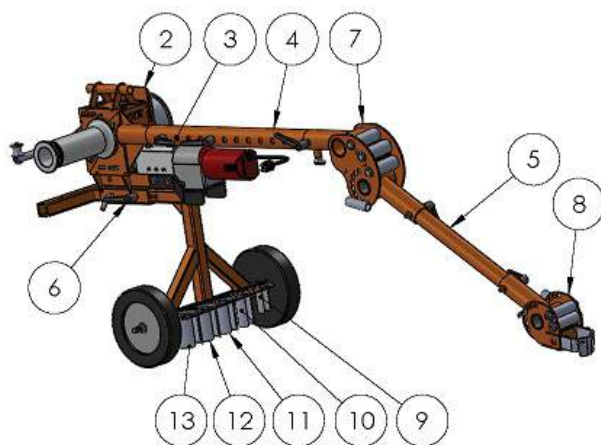
Do not use the cable puller as a hoist or winch. The cable puller cannot lower a load. The load may fall and cause serious injury or death.

FAILURE TO OBSERVE THESE WARNINGS CAN RESULT IN SEVERE INJURY OR DEATH.

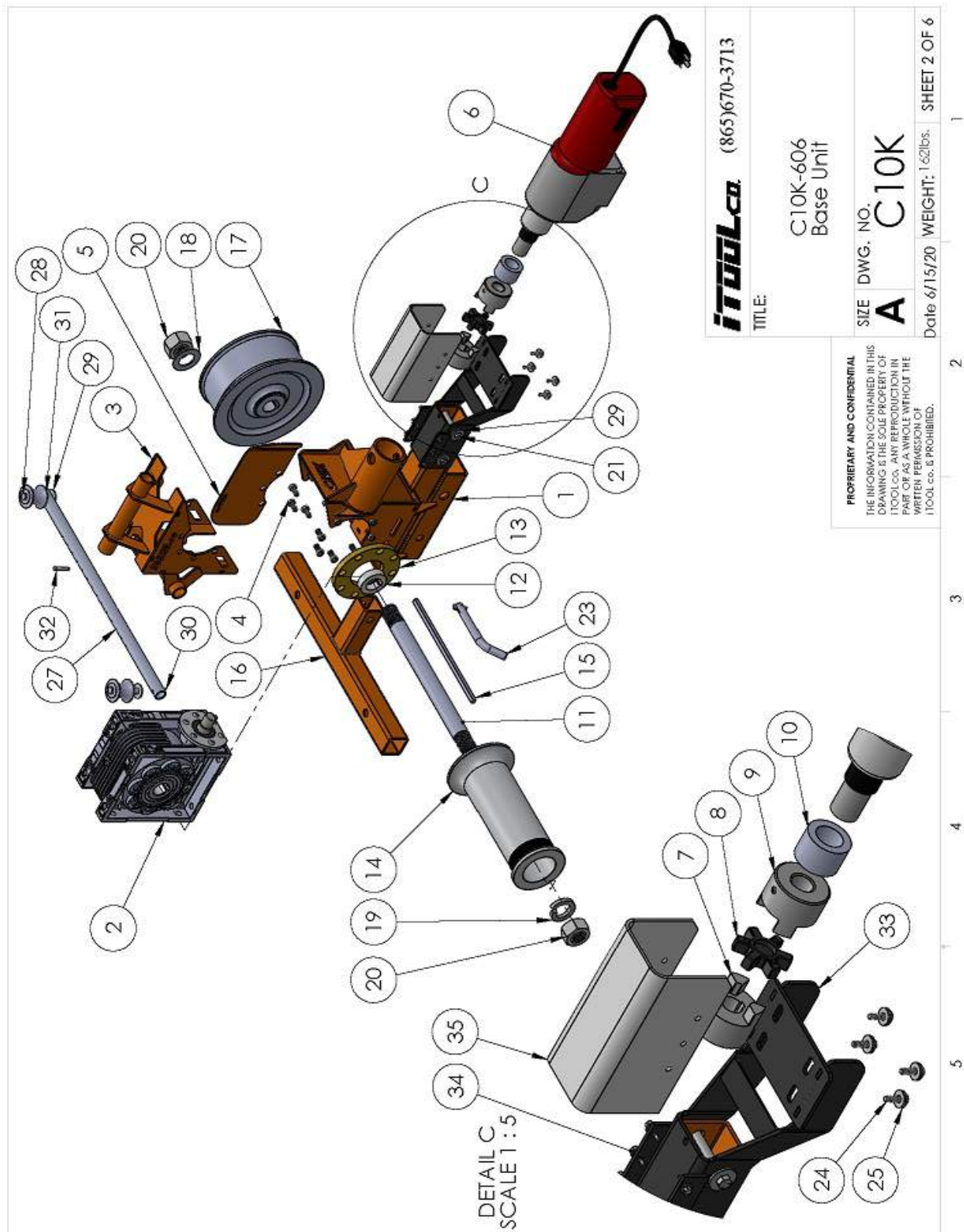
DESCRIPTION AND IDENTIFICATION

The ITOOLco Cannon 10K is a 10,000 lb. cable puller intended to pull medium to large wire through conduit. It sets up in only minutes, and is a dual capstan, four-speed puller. The Cannon 10K can pull at speeds from 9 to 40 feet per minute. It does not need to be anchored to the ground, and is easy for one person to set up, transport, and operate.

| ITEM NO. | PART NUMBER | DESCRIPTION | Default/ QTY. |
|----------|-------------|--------------------------------|------------------|
| 1 | C10K-603 | Wheeled frame | 1 |
| 2 | C10K-606 | Gearbox Base unit (see pg. 2) | 1 |
| 3 | C10K-404 | 15" Extension tube | 1 |
| 4 | C10K-406 | 33" Extension tube | 1 |
| 5 | C10K-405 | 30" Extension | 2 |
| 6 | SP- 123 | 5/8" x 3"L Adjustable handle | 3 |
| 7 | C10K-617 | Main roller complete assembly | 1 |
| 8 | C10K-618 | Front roller (see pg. 4) | 1 |
| 9 | CK-20 | 2" Conduit Adapter | 1 |
| 10 | CK-25 | 2.5" Conduit Adapter | 1 |
| 11 | CK-30 | 3" Conduit Adapter | 1 |
| 12 | CK-35 | 3.5" Conduit Adapter | 1 |
| 13 | CK-40 | 4" Conduit Adapter | 1 |
| 14 | SP-110 | 18" Orange bungee | 1 |



| | | |
|--|---------------|---------------|
| iTOOLco | | (865)670-3713 |
| TITLE: | | |
| CANNON 10K | | |
| NAME | D. Jordan | DATE 5/14/17 |
| SIZE | PART. NO. | |
| A | C10K.2 | |
| SCALE: 1:20 WEIGHT: 308 lbs SHEET 1 OF 6 | | |



iToolCo (865)670-3713

TITLE:

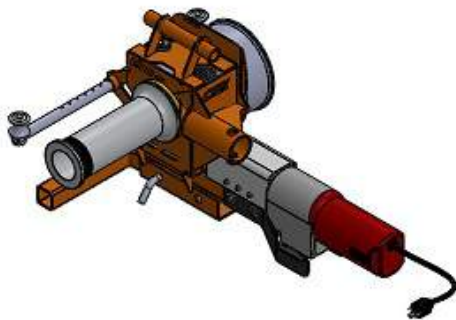
C10K-606
Base Unit

SIZE DWG. NO.
A **C10K**

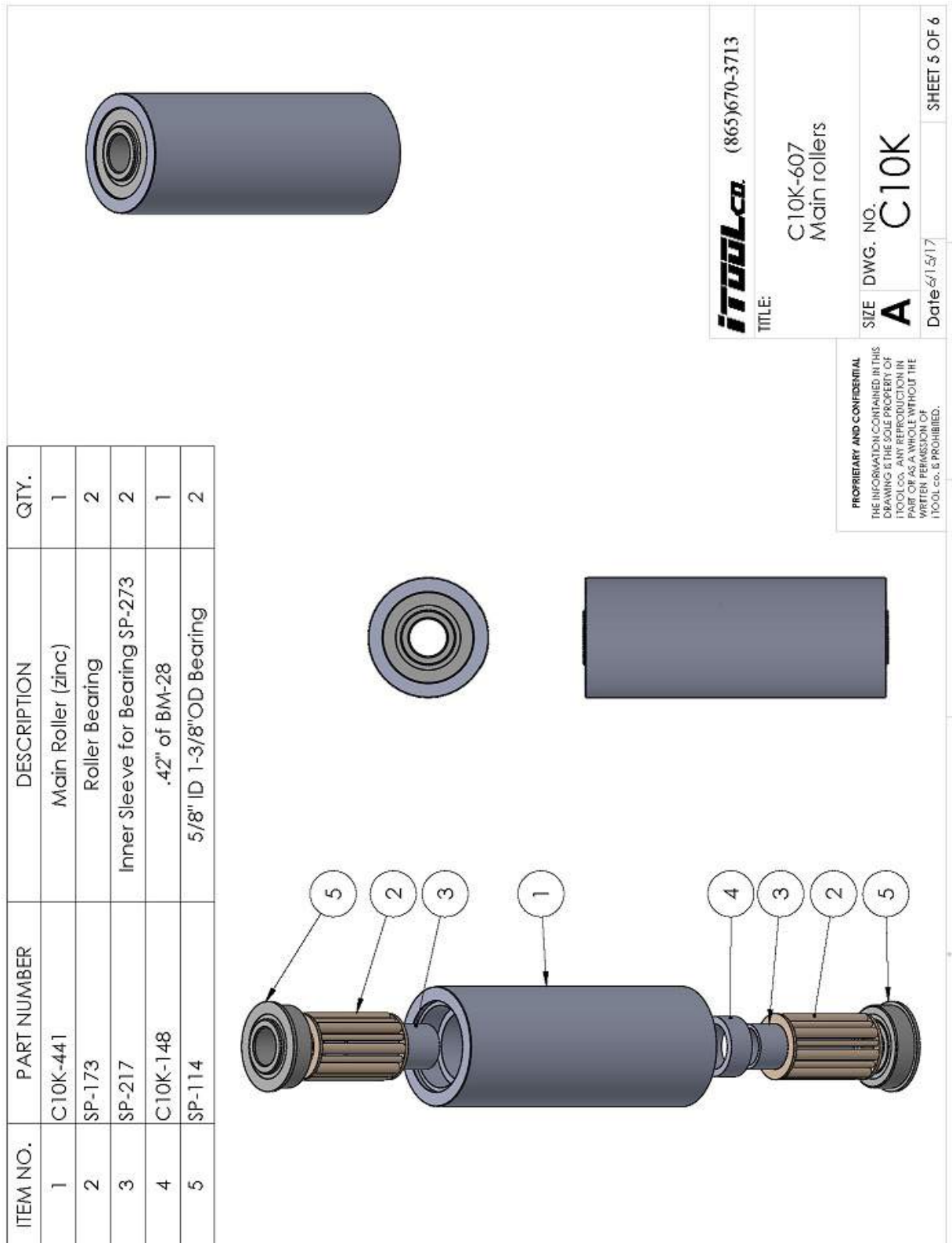
Date 6/15/20 WEIGHT: 1.62lbs. SHEET 2 OF 6

PROPRIETARY AND CONFIDENTIAL
THE INFORMATION CONTAINED IN THIS
DRAWING IS THE SOLE PROPERTY OF
ITTOOLCO. ANY REPRODUCTION IN
PART OR WHOLE WITHOUT THE
WRITTEN PERMISSION OF
ITTOOLCO IS PROHIBITED.

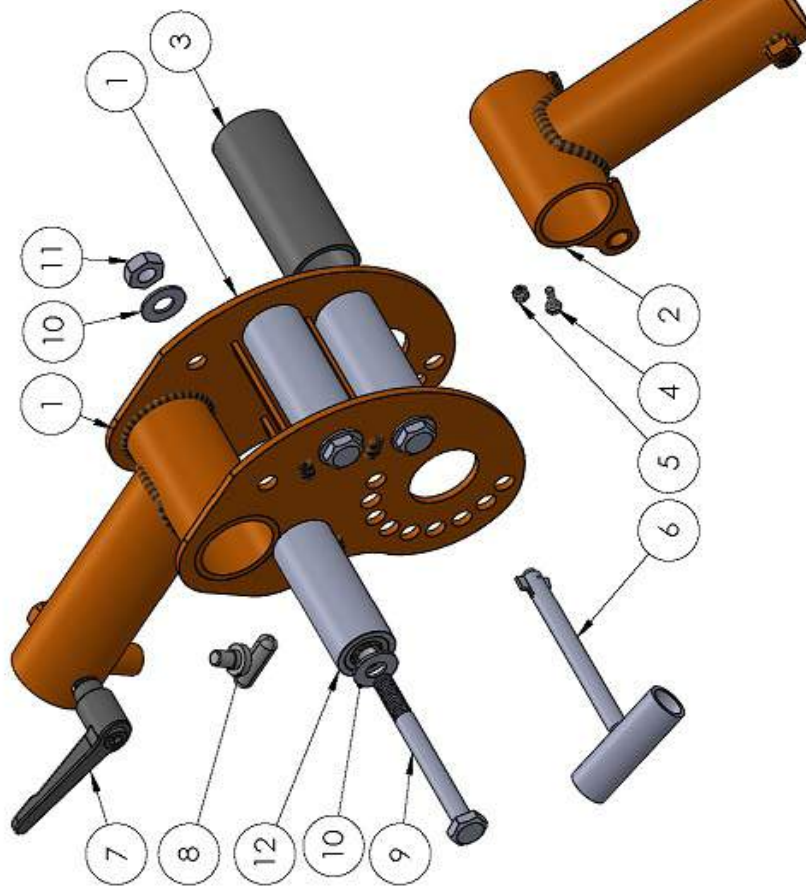
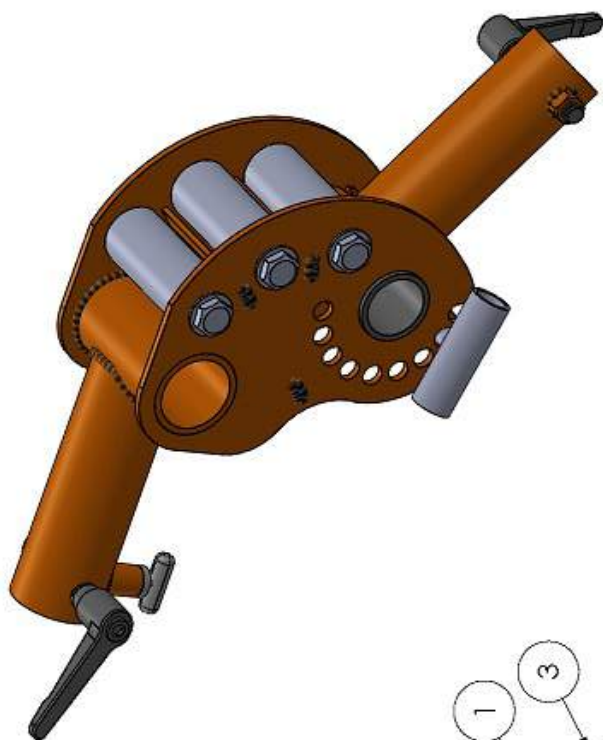
| ITEM NO. | PART NUMBER | DESCRIPTION | QTY. |
|----------|-------------|--------------------------------------|------|
| 1 | C10K-413 | Gearbox bottom frame | 1 |
| 2 | GB-002.1 | 10K Gearbox | 1 |
| 3 | C10K-420 | Gearbox Top W/Handles | 1 |
| 4 | HW-240 | M10 low head 10K gearbox mount bolts | 16 |
| 5 | C10K-426 | Shark fin | 1 |
| 6 | SP-125 | 10K motor | 1 |
| 7 | SP-118 | Motor coupling gearbox side | 1 |
| 8 | SP-120 | Spider coupling | 1 |
| 9 | SP-119 | Motor coupling motor side | 1 |
| 10 | SP-157 | 10K motor spacer coupling | 1 |
| 11 | SP-103 | Output Shaft | 1 |
| 12 | SP-117 | 10K capstan spacer | 1 |
| 13 | SP-126 | 10K Brass bearing | 1 |
| 14 | C10K-143 | 10K High torque capstan | 1 |
| 15 | SP-111 | 10 x 12 mm x 12"L Key stock | 1 |
| 16 | C10K-422 | Reciever hitch adapter | 1 |
| 17 | C10K-144M | 10K High speed capstan | 1 |
| 18 | HW-196 | 1-3/8" flat washer | 1 |
| 19 | HW-202 | 1-3/8" lock washer | 1 |
| 20 | HW-204 | 1-3/8" 6T hex nut | 2 |
| 21 | HW-144 | 1/2" 13t x 4" Hex bolt | 2 |
| 22 | HW-306 | 1/2" 13T x nyloc nut | 2 |
| 23 | SP-185 | 5/8" Bent Hitch Pin | 1 |
| 24 | HW-120 | 1/4"-20t x 7/8" hex bolt | 4 |
| 25 | HW-126 | 1/4" flat washer | 8 |
| 26 | HW-123 | 1"-.25 roll pin | 2 |
| 27 | C10K-423 | Rope roller tube | 1 |
| 28 | HW-254 | 1/2" X 3"L Clevis pin | 2 |
| 29 | HW-166 | 1/2" flat washer | 8 |
| 30 | HW-222 | 1/8" cotter pin | 1 |
| 31 | SP-109 | Rope roller | 2 |
| 32 | HW-250 | 1/4" Pin w/ retainer | 1 |
| 33 | C10K-425.3 | Motor Mount | 1 |
| 34 | HW-315 | self tap | 6 |
| 35 | C10K-447 | Shaft cover | 1 |



| | | | |
|--|--|---|--|
| iTOOLco (865)670-3713 <small>PROPRIETARY AND CONFIDENTIAL THE INFORMATION CONTAINED IN THIS DRAWING IS THE SOLE PROPERTY OF iTOOL co. ANY REPRODUCTION IN PART OR AS A WHOLE WITHOUT THE WRITTEN PERMISSION OF iTOOL co. IS PROHIBITED.</small> | | TITLE: 10K Base Bill of Materials | |
| SIZE A | | DWG. NO. C10K-606 | |
| Date 8/28/16 | | SHEET 3 OF 6 | |



| ITEM NO. | PART NUMBER | DESCRIPTION | QTY. |
|----------|-------------|--|------|
| 1 | C10K-403 | Main roller | 1 |
| 2 | C10K-409 | Main roller adjustable coupling | 1 |
| 3 | C10K-411 | Main rollers sleeve | 1 |
| 4 | HW-120 | 1/4"-20I x 7/8" hex bolt | 1 |
| 5 | HW-128 | 1/4 20 Nyloc nut | 1 |
| 6 | SP-182 | 5/8" Hitch Pin w/ Flashlight Holder | 1 |
| 7 | SP-123 | 5/8" x 3" Adjustable handle | 2 |
| 8 | SP-001.2 | Pull Pop Pin | 1 |
| 9 | HW-175 | 5/8" 111 x 6.5" Bolt | 3 |
| 10 | HW-176 | 5/8" SAE Washer | 6 |
| 11 | Hw-182 | 5/8" nyloc nut | 3 |
| 12 | C10K-607 | 2" Steel Roller (with sleeve bearings) | 3 |



ITWULCO
(865)670-3713

TITLE:

Main Roller

| SIZE | PART. NO. |
|--------|-----------|
| 1/2 | 100 |
| 3/4 | 101 |
| 1 | 102 |
| 1 1/2 | 103 |
| 2 | 104 |
| 2 1/2 | 105 |
| 3 | 106 |
| 3 1/2 | 107 |
| 4 | 108 |
| 4 1/2 | 109 |
| 5 | 110 |
| 5 1/2 | 111 |
| 6 | 112 |
| 6 1/2 | 113 |
| 7 | 114 |
| 7 1/2 | 115 |
| 8 | 116 |
| 8 1/2 | 117 |
| 9 | 118 |
| 9 1/2 | 119 |
| 10 | 120 |
| 10 1/2 | 121 |
| 11 | 122 |
| 11 1/2 | 123 |
| 12 | 124 |
| 12 1/2 | 125 |
| 13 | 126 |
| 13 1/2 | 127 |
| 14 | 128 |
| 14 1/2 | 129 |
| 15 | 130 |
| 15 1/2 | 131 |
| 16 | 132 |
| 16 1/2 | 133 |
| 17 | 134 |
| 17 1/2 | 135 |
| 18 | 136 |
| 18 1/2 | 137 |
| 19 | 138 |
| 19 1/2 | 139 |
| 20 | 140 |
| 20 1/2 | 141 |
| 21 | 142 |
| 21 1/2 | 143 |
| 22 | 144 |
| 22 1/2 | 145 |
| 23 | 146 |
| 23 1/2 | 147 |
| 24 | 148 |
| 24 1/2 | 149 |
| 25 | 150 |
| 25 1/2 | 151 |
| 26 | 152 |
| 26 1/2 | 153 |
| 27 | 154 |
| 27 1/2 | 155 |
| 28 | 156 |
| 28 1/2 | 157 |
| 29 | 158 |
| 29 1/2 | 159 |
| 30 | 160 |
| 30 1/2 | 161 |
| 31 | 162 |
| 31 1/2 | 163 |
| 32 | 164 |
| 32 1/2 | 165 |
| 33 | 166 |
| 33 1/2 | 167 |
| 34 | 168 |
| 34 1/2 | 169 |
| 35 | 170 |
| 35 1/2 | 171 |
| 36 | 172 |
| 36 1/2 | 173 |
| 37 | 174 |
| 37 1/2 | 175 |
| 38 | 176 |
| 38 1/2 | 177 |
| 39 | 178 |
| 39 1/2 | 179 |
| 40 | 180 |
| 40 1/2 | 181 |
| 41 | 182 |
| 41 1/2 | 183 |
| 42 | 184 |
| 42 1/2 | 185 |
| 43 | 186 |
| 43 1/2 | 187 |
| 44 | 188 |
| 44 1/2 | 189 |
| 45 | 190 |
| 45 1/2 | 191 |
| 46 | 192 |
| 46 1/2 | 193 |
| 47 | 194 |
| 47 1/2 | 195 |
| 48 | 196 |
| 48 1/2 | 197 |
| 49 | 198 |
| 49 1/2 | 199 |
| 50 | 200 |

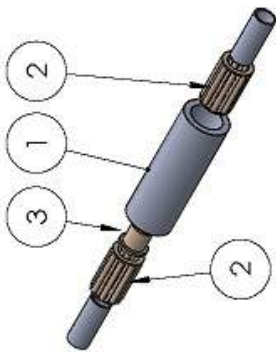
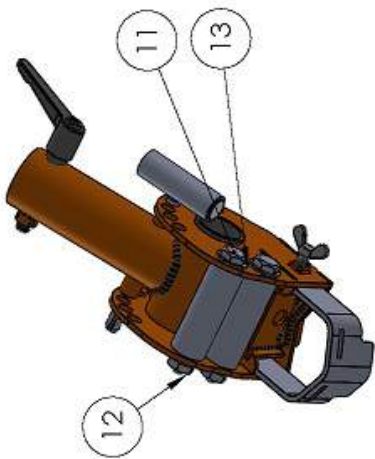
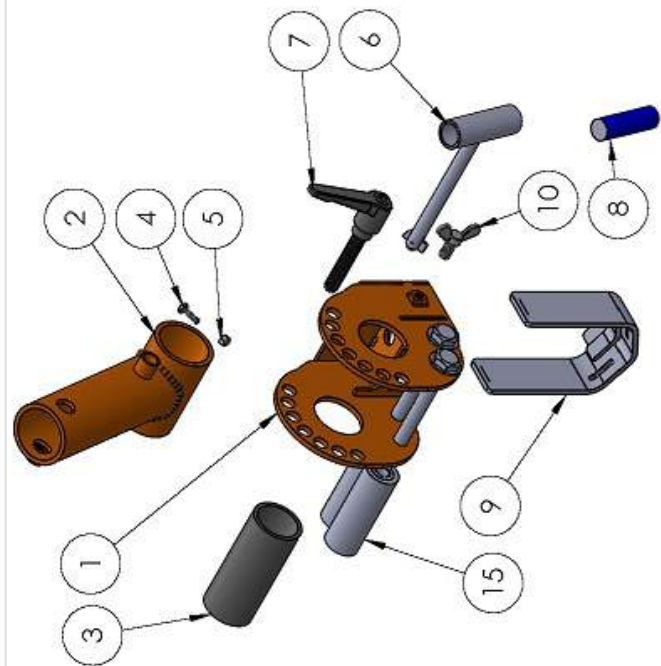
A C10K-617

Date 4/14/16 WEIGHT: 42lbs. SHEET 4 OF 6

| ITEM NO. | PART NUMBER | DESCRIPTION | QTY. |
|----------|-------------|---|------|
| 1 | C10K-402 | Front Head | 1 |
| 2 | C10K-410 | Front roller adjustable coupling | 1 |
| 3 | C10K-412 | Front roller adjustable coupling sleeve | 1 |
| 4 | HW-120 | 1/4"-20t x 7/8" hex bolt | 1 |
| 5 | HW-128 | 1/4 20 Nyloc nut | 1 |
| 6 | SP-182 | 5/8" Hitch Pin w/ Flashlight Holder | 1 |
| 7 | SP-123 | 5/8" x 3"L Adjustable handle | 1 |
| 8 | SP-121 | LED Flashlight | 1 |
| 9 | CK-10 | Universal Adapter | 1 |
| 10 | HW-164 | 1/2" 13t Wing Bolt | 1 |
| 11 | HW-174 | 5/8" 11t x 6" Bolt | 2 |
| 12 | HW-182 | 5/8" nyloc nut | 2 |
| 14 | HW-176 | 5/8" SAE Washer | 3 |
| 15 | C10K-609 | Front Knuckle Roller | 2 |

C10K-609 Parts Breakout

| ITEM NO. | PART NUMBER | DESCRIPTION | QTY. |
|----------|-------------|----------------------------------|------|
| 1 | C10K-449 | 4.56" - 1.625" x .25w DOM BM 75 | 1 |
| 2 | SP-173 | Roller Bearing 1.125od x 1.8Long | 2 |
| 3 | SP-179 | Bearing 5/8 x 3/4x 5/8 x 1 x 1/8 | 1 |
| 4 | SP-217 | Inner Sleeve for Bearing SP-273 | 2 |



iToolCo (865)670-3713

TITLE:

Front roller

PROPRIETARY AND CONFIDENTIAL
THE INFORMATION CONTAINED IN THIS
DRAWING IS THE SOLE PROPERTY OF
ITTOOLCO. ANY REPRODUCTION IN
WHOLE OR IN PART WITHOUT THE
WRITTEN PERMISSION OF
ITTOOL CO. IS PROHIBITED.

SIZE DWG. NO.
A C10K-618

Date 6/15/17 WEIGHT: 28lbs SHEET 6 OF 6

1

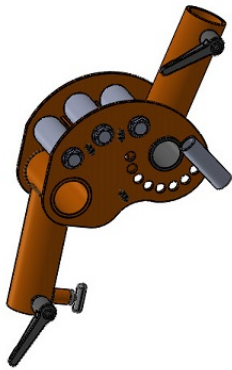
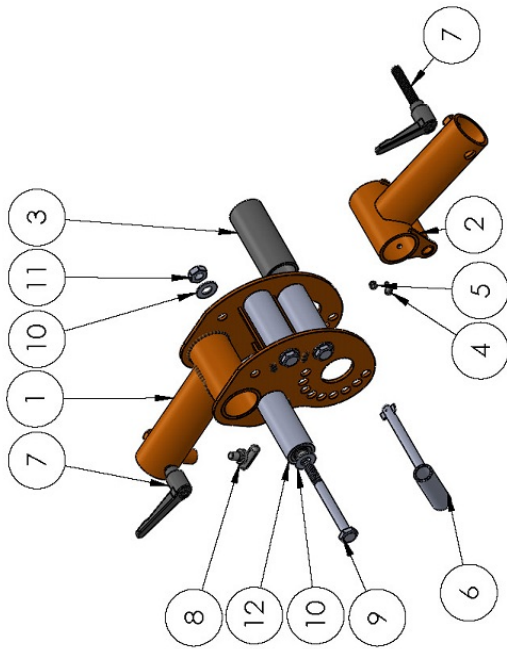
2

3

4

5

| ITEM NO. | PART NUMBER | DESCRIPTION | QTY. |
|----------|-------------|--|------|
| 1 | C10K-403 | Main roller | 1 |
| 2 | C10K-409 | Main roller adjustable coupling | 1 |
| 3 | C10K-411 | Main rollers sleeve | 1 |
| 4 | HW-120 | 1/4"-20t x 7/8" hex bolt | 1 |
| 5 | HW-128 | 1/4 20 Nyloc nut | 1 |
| 6 | SP-182 | 5/8" Hitch Pin w/ Flashlight Holder | 1 |
| 7 | SP- 123 | 5/8" x 3"L Adjustable handle | 2 |
| 8 | SP-001.2 | Pull Pop Pin | 1 |
| 9 | HW-175 | 5/8" 11t x 6.5" Bolt | 3 |
| 10 | HW-176 | 5/8" SAE Washer | 6 |
| 11 | Hw-182 | 5/8" nyloc nut | 3 |
| 12 | C10K-607 | 2" Steel Roller (with sleeve bearings) | 3 |



IToolCo (865)670-3713

TITLE:

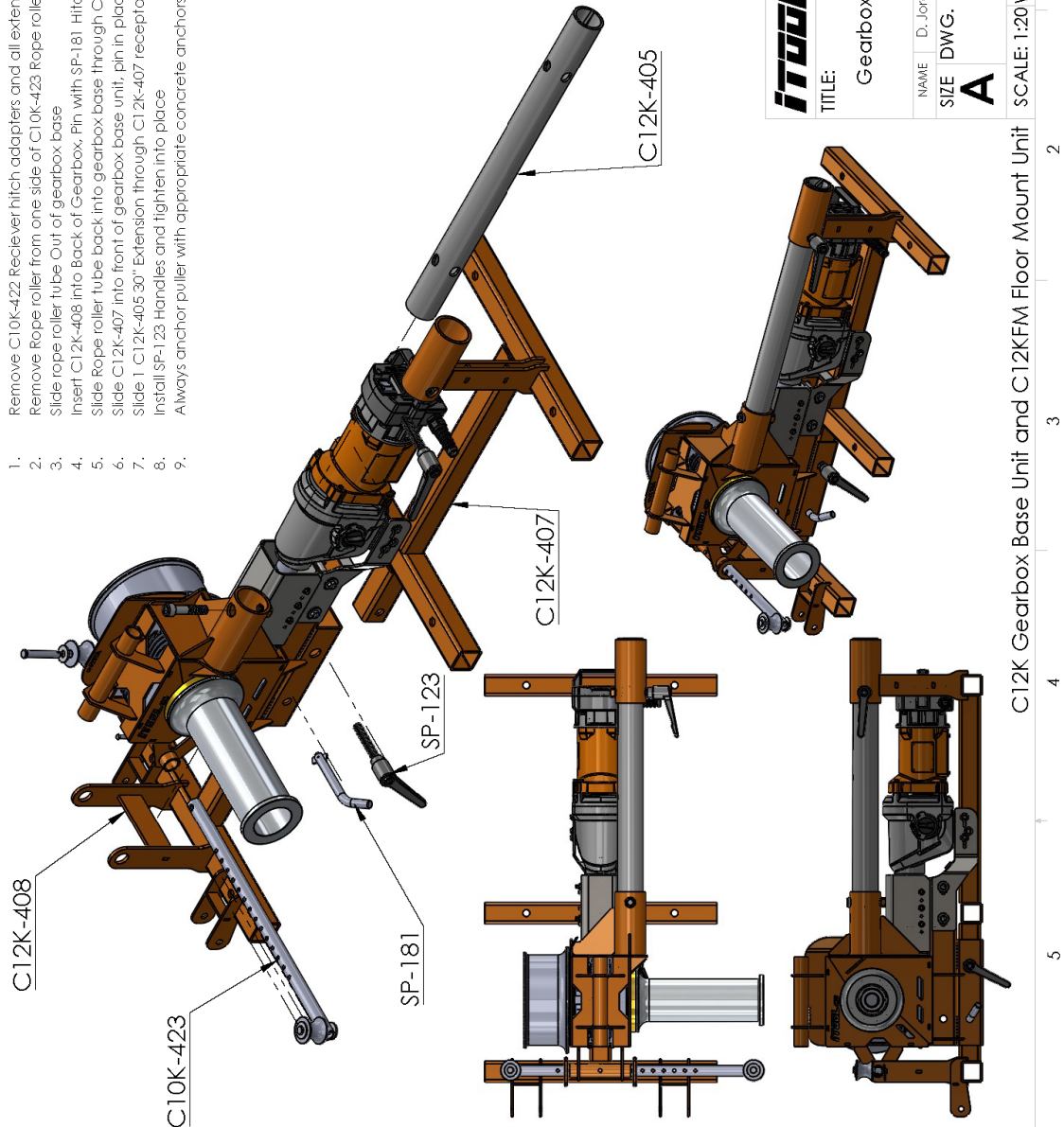
PROPRIETARY AND CONFIDENTIAL
THE INFORMATION CONTAINED IN THIS
DRAWING IS THE SOLE PROPERTY OF
IToolCo. ANY REPRODUCTION IN
WHOLE OR IN PART WITHOUT THE
WRITTEN PERMISSION OF
IToolCo. IS PROHIBITED.

SIZE DWG. NO. REV
A **C12K**

Date WEIGHT: SHEET 5 OF 7

5 4 3 2 1

- To Install C12KFM01 Kit to C12K-606 Gearbox Base unit
1. Remove C10K-422 Receiver hitch adapters and all extensions and rollers
 2. Remove Rope roller from one side of C10K-423 Rope roller tube
 3. Slide rope roller tube Out of gearbox base
 4. Insert C12K-408 into Back of Gearbox. Pin with SP-181 Hitch pin
 5. Slide Rope roller tube back into gearbox base through C12K-408
 6. Slide C12K-407 into front of gearbox base unit. pin in place with SP-123
 7. Slide 1 C12K-405 30" Extension through C12K-407 receptacle and mount into gearbox base
 8. Install SP-123 Handles and tighten into place
 9. Always anchor puller with appropriate concrete anchors before pulling



| | | | |
|---|-----------|---------------|----|
|  | | (865)670-3713 | |
| TITLE: Gearbox Base unit (see pg. 2) | | | |
| NAME | D. Jordan | DATE | ?? |
| SIZE | DWG. NO. | REV | |
| A | | | |
| SCALE: 1:20 WEIGHT: | | SHEET 1 OF 1 | |
| | | 1 | |



SET UP AND OPERATION

Assembly

1. Always wear gloves, eye protection, and appropriate safety gear when working with pullers.
2. Remove iTOOLco Cannon 10K from shipping crate.
3. Insert 5 conduit adapters into base unit.
4. If necessary, install axle and wheels onto base.
5. iTOOLco Cannon 10K is designed to be used with a core drill motor, Milwaukee #4096.
6. Plug in the foot switch to the 100 volt power supply.
7. Set the desired speed.

Attaching Conduit Adapters

Option 1 - Using the universal adapter (Figure 1)

1. Loosen the 1/2" bolt on either side of the front head.
2. Slide the universal adapter in or out to accommodate the appropriate size of conduit, as shown in Figure 3.
3. Make sure that the adapter engages the conduit, as shown in Figure 4.

Note: The universal adapter is to be used for pulling loads under 5,000 lbs. For loads over 5,000 lbs., the conduit adapters provided with your puller should always be utilized.

Option 2 - Using the appropriate 2" – 4" adapter (Figure 2)

1. Place the desired conduit adapter size into the top of the universal adapter. See Figures 5 and 6.
2. Slide the adapters toward the puller until the male pin on the adapter engages the female opening and stops. Tighten the 1/2" bolt on the side of the head body. See Figure 7.
3. Remove the adjustment hitch pin. Slide the puller into position and place the conduit adapter into the conduit. See Figure 8.
4. Replace all hitch pins.



Fig. 1



Fig. 2



Fig. 3



Fig. 4



Fig. 5



Fig. 6



Fig. 7



Fig. 8

Underground Wire Pull

1. Pivot front extension assembly as needed and reinsert pin.
2. Lift up front end and place conduit adapter into conduit. Always make sure conduit adapter sits flush around the conduit you are pulling through.
3. Replace pin front assembly to lock all parts tight. (This must be pinned for the puller to operate safely and properly.)
4. Make sure side set screw is tight on the universal adapter.
5. Do not stand in-line with the rope being pulled, (stand to the side of the puller) to avoid injury if the rope breaks.
6. Use proper lubricant to make pulling jobs smoother.
7. Determine which capstan you will be using. For lighter loads at high speed, use the large diameter capstan. For heavy loads, use the small diameter capstan. Note: To achieve the optimum pulling speed when making a wire pull, listen to the sound of the motor. If it is determined that the motor is straining, switch to the small diameter capstan.
8. Loosely wrap rope around the appropriate capstan. Start the capstan turning by stepping on the included footswitch. Pull on the rope to produce some tension. The rope will begin to advance. Note: If balling or backlashing occurs, reduce the number of wraps around the capstan.
9. Maintain tension on the rope. The rope will slip on the capstan during normal operation. Keep the rope moving so that the capstan does not contact one spot on the rope for more than a few seconds. If the rope stays in contact with the capstan for more than a few seconds, it will heat up quickly and may break. Do not exceed about 45 N (10 lbs.) of tension on the rope. If the pull becomes difficult, add another wrap or two of rope to the capstan. If excessive force becomes necessary, stop the pull and inspect the set up.



Overhead Wire Pull

1. Convert the Cannon 10K to an overhead configuration by removing the cinch pin at the main knuckle. Pull the snap pin, and rotate the front end right or left to the desired position.
2. To achieve optimum balance, slide base to adjust the front knuckle weight.
3. Adjust front knuckle and main knuckle for proper alignment of the adapter into and onto the conduit.
4. Use the universal adapter if the pull is under 5,000 lbs. If the pull is over 5,000 lbs. attach the correct size adapter and thread the rope through the adapter.
5. Install and tighten all pins.
6. Do not stand in-line with the rope being pulled, (stand to the side of the puller) to avoid injury if the rope breaks.
Note: Use only low stretch rope designed for wire pulling, 5/8" to 1 1/4" sizes.
7. Use proper lubricant or no-lube wire to make pulling jobs smoother.
8. Determine which capstan to use. For lighter loads at high speed, use the large diameter capstan. For heavy loads, use the small diameter capstan.
Note: To achieve optimum pulling speed, listen to the sound of the motor. If the motor is straining, switch to the small diameter capstan.
9. Loosely wrap rope around the appropriate capstan. Step on the included foot switch to start the capstan turning. Pull on the rope to produce some tension. The rope will begin to advance. **Note:** If balling or backlashing occurs, reduce the number of wraps around the capstan
10. Maintain tension on the rope. The rope will slip on the capstan during normal operation. Keep the rope moving so that it does not contact one area of the capstan for more than a few seconds, or it may heat up and break.
Note: Do not exceed about 45 N (10 lbs.) of tension on the rope. If the pull becomes difficult, add another wrap or two of rope to the capstan. If excessive force becomes necessary, stop the pull and inspect the set up.



Pulling Out Extra Wire

1. If extra wire is needed, a 2.5" rigid pipe can be used as an extension. Separate the front knuckle from the main knuckle. Figure 1.
2. Slide an extension tube into the end of the main coupling and the front coupling as shown in Figure 2.
3. Then slide the piece of 2.5" rigid pipe over the extension tube in Figure 3.
4. Slide the front coupling into the rigid pipe. Figure 3.
5. See Figure 4 for an example of a completed set up.



Receiver Hitch Wire Pulls

1. Remove bottom pin from adjustable leg and remove front assembly from gear box section.
2. Remove base plate pin and remove base plate.
3. Slide base tube into trailer receiver hitch with the capstans horizontal.
4. Secure puller to receiver hitch with base plate pin.



Maintenance

Gear box is filled with high-temperature synthetic gear lubricant. No maintenance is required. Always make sure that Cannon 10K is clean and in good working order before use. Replace any worn rollers or rusty pins before use.

Specifications

| | |
|--|----------------|
| Length (fully extended) | 10' 6" |
| Width | 30" |
| Weight/Mass | 272 lb. |
| Pulling rope minimum average breaking strength | 15,000 lbs. |
| Recommended pulling rope size | 5/8" or larger |
| Patent | US 9172224 B2 |



LIMITED WARRANTY: ITOOLCO CANNON 10K

iTOOLCo warrants all new Cannon 10K covered by this agreement, when properly used, to be free from defects in material and workmanship under normal use and service for which it is intended for a period of one year from date of delivery by the dealer. Date of delivery shall be the date product is placed in possession of the user. NORMAL WEAR FROM USE IS NOT PART OF THIS WARRANTY. This limited warranty is extended to the original user only and is not transferrable to, nor enforceable by any other person.

iTOOLCo will replace free of charge any part(s) of the product found to be defective when such part(s) is returned to iTOOLCo at the address shown below, freight prepaid. If the part(s) is found to be defective, iTOOLCo will refund freight charges paid by you in returning the defective part(s) and prepay replacement part(s) freight charges. iTOOLCo will not be responsible for more than replacement of any defective part(s) and standard freight charges (parcel post or UPS ground rate) of any part(s) found to be defective.

THIS IS THE EXCLUSIVE REMEDY. ITOOLCO SHALL NOT BE RESPONSIBLE OR LIABLE FOR ANY INCIDENTAL OR CONSEQUENTIAL DAMAGES RESULTING FROM ANY DEFECTS COVERED BY THIS WARRANTY OR ANY IMPLIED WARRANTY APPLICABLE TO THE PRODUCT INCLUDING, BUT NOT LIMITED TO, PROPERTY DAMAGE, LOSS OF USE OF PRODUCT, LOSS OF TIME, LOSS OF PROFITS, INCONVENIENCE, COMMERCIAL LOSS, LABOR COSTS, SERVICE TRIPS, AND MILEAGE.

Some states do not allow limitation on how long an implied warranty lasts, so the above limitation may not apply to you.

Dealer/Distributor Warranty Claim Procedure

1. All warranty claims must be pre-approved by iTOOLCo Warranty Department PRIOR to starting any warranty work. Warranty work performed without prior approval will not be considered.
2. All claims must be handled through dealer/distributor.
3. Written approval must be received from iTOOLCo before return of merchandise. A Return Authorization is to be returned with the merchandise which is sent back.
4. All parts must be returned to iTOOLCo at the address shown below, freight prepaid.
5. The serial number of the product and the date of delivery must accompany the part(s) being returned.
6. If the part(s) is found to have failed because of a defect in material or workmanship, replacement will be made on a no-charge basis, and the part(s) returned, freight prepaid. Standard freight charges (parcel post or UPS ground rate) incurred in returning the part(s) will be refunded.
7. For reasons of expediency, replacement and/or repair part(s) may be shipped as soon as possible and billed to the dealer/distributor. When part(s) is returned, if it is covered under warrant, credit will be issued for the part(s) and freight charges.
8. All parts found to be defective shall be retained by and shall become the property of iTOOLCo. This warranty gives you specific legal rights, and you may also have other rights which vary from state to state.

Corporate Address: iTOOLCo
100 Mecor Lane
Oak Ridge, TN 37830

