

**ITool.co.**

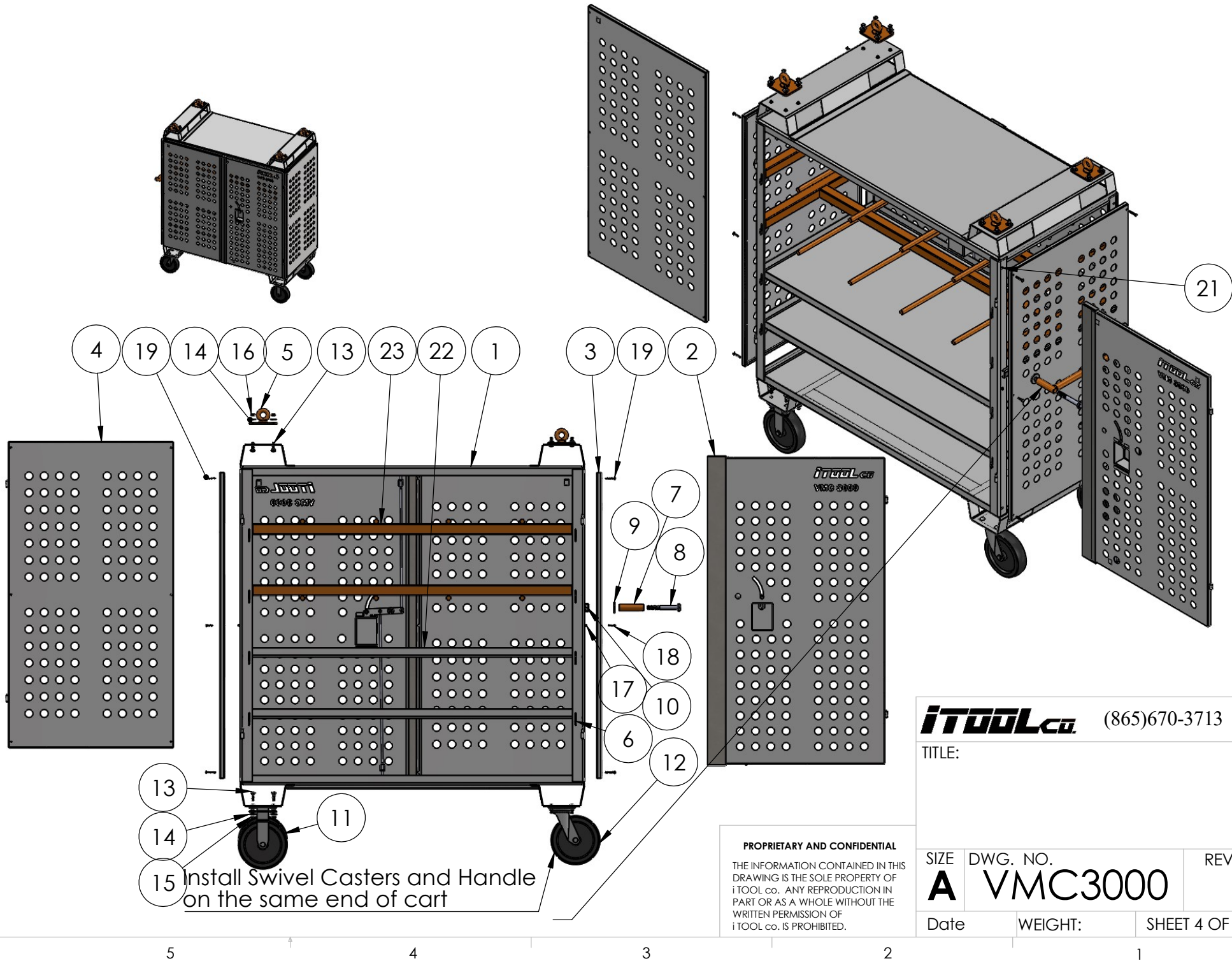
(865)670-3713

TITLE:

NAME	D. Jordan	DATE	??
SIZE	DWG. NO.	REV	
<b>A</b>	<b>VMC3000</b>		
SCALE: 1:50		WEIGHT:	SHEET 1 OF 6







**iTOOLco** (865)670-3713

TITLE:

**PROPRIETARY AND CONFIDENTIAL**

THE INFORMATION CONTAINED IN THIS DRAWING IS THE SOLE PROPERTY OF iTOOL co. ANY REPRODUCTION IN PART OR AS A WHOLE WITHOUT THE WRITTEN PERMISSION OF iTOOL co. IS PROHIBITED.

SIZE	DWG. NO.	REV
<b>A</b>	<b>VMC3000</b>	
Date	WEIGHT:	SHEET 4 OF 6



ITEM NO.	PART NUMBER	DESCRIPTION	Default/QT Y.
1	VMC-401	Cart Main Frame	1
2	VMIC-613	Assembled Door Latch Side	2
3	VMIC-414	Coated Bolt on Side	2
4	VMIC-415	Hinged Door No Logo	2
5	VMIC-416	Bolt on Picking Eye	4
6	VMIC-408	Shelf Holding Bracket	16
7	VMIC-421	Handle Weldment	1
8	HW-179	.625 11t x 5" bolt	2
9	HW-331	5/8" Standard Washer 1.75 OD	2
10	Hw-182	5/8" nyloc nut	2
11	SP-241	8" Pheniloc Swivel Caster	2
12	SP-240	8" Phenolic Rigid Caster	2
13	HW-327	3/8" 16T x 1.25"L Carriage Bolt	32
14	HW-146	1/2" Flat Washer	32
15	HW-150	3/8" Nylock Nut	24
16	HW-150	3/8" Nylock Nut	8
17	HW-334	10-24 x .5" Long Steel Binding Barrel	4
18	HW-333	10-24 x 1" long Carriage bolt fully threaded	4
19	HW-332	10-24 x 1.5" long fully threaded carriage bolt	8
20	HW-335	10-24 Nylock Hex Nut	8
21	HW-336	size #10 SAE Washer	8
22	VMIC-405	Coated Pans	2
23	VMIC-417	Wire Bar	2

**PROPRIETARY AND CONFIDENTIAL**

THE INFORMATION CONTAINED IN THIS DRAWING IS THE SOLE PROPERTY OF iTOOL co. ANY REPRODUCTION IN PART OR AS A WHOLE WITHOUT THE WRITTEN PERMISSION OF iTOOL co. IS PROHIBITED.

**iTOOLco.**

(865)670-3713

TITLE:

SIZE

**A**

DWG. NO.

**VMC3000**

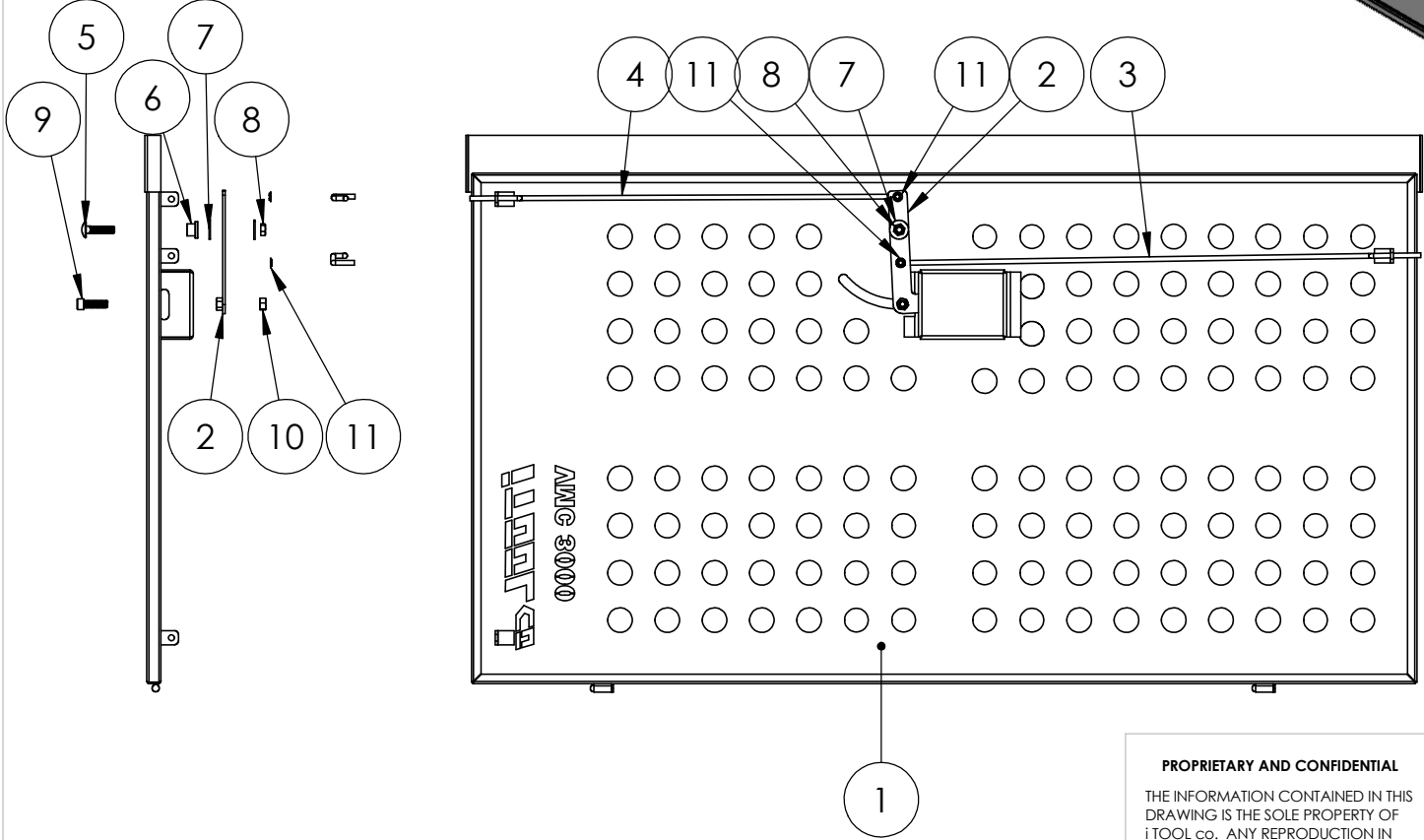
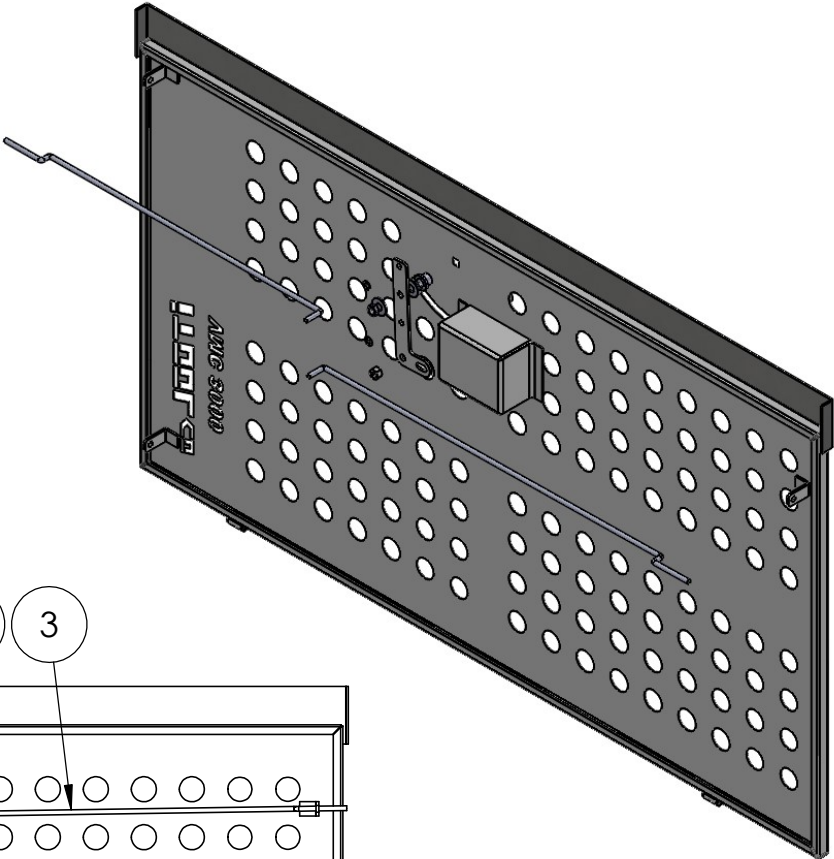
REV

Date

WEIGHT:

SHEET 5 OF 6

ITEM NO.	PART NUMBER	DESCRIPTION	QTY.
1	VMIC-413	VMIC screw on end door	1
2	VMIC-407	Door Latch Zinc Coated	1
3	VMIC-418	Bent Lock Rod for Bottom	1
4	VMIC-419	Bent Lock Rod for Top	1
5	HW-328	3/8" 16T x 1.5" Long Carriage Bolt	1
6	SP-213	Capture Bushing	1
7	HW-146	1/2" Flat Washer	2
8	HW-150	3/8" Nylock Nut	1
9	HW-330	3/8" 16T x 1.25 Socket Head bolt	1
10	HW-329	3/8" 16T Hex Nut	1
11	HW-326	1/4" Push Nut	2



**iTOOL**co. (865)670-3713

TITLE:

PROPRIETARY AND CONFIDENTIAL  
THE INFORMATION CONTAINED IN THIS  
DRAWING IS THE SOLE PROPERTY OF  
iTOOL co. ANY REPRODUCTION IN  
PART OR AS A WHOLE WITHOUT THE  
WRITTEN PERMISSION OF  
iTOOL co. IS PROHIBITED.

SIZE <b>A</b>	DWG. NO. <b>VMC3000</b>	REV
------------------	----------------------------	-----

Date	WEIGHT:	SHEET 6 OF 6
------	---------	--------------