



User's Guide



ROLL JACKS 3072™

100 MECO LANE | OAK RIDGE, TN 37830 | 865.670.3713 | ITOOLCO.COM
© 2017 PROPERTY OF ITOOLCO



**BEFORE OPERATION OF THIS TOOL, READ AND
UNDERSTAND ALL OF THE INSTRUCTIONS AND
SAFETY INFORMATION IN THIS MANUAL**



Contents

SAFETY FIRST	3
SAFETY ALERT SYMBOLS	3
IMPORTANT SAFETY INFORMATION.....	4
DESCRIPTION AND IDENTIFICATION	6
SET UP AND OPERATION	12
LIMITED WARRANTY: ITOOLCO ROLL JACKS 3072	13

SAFETY FIRST

Safety is essential in the use and maintenance of this tool. This instruction manual and any markings on the tool provide information for avoiding hazards and unsafe practices related to the use of this tool. Observe all of the safety information provided.

SAFETY ALERT SYMBOLS

This symbol is used to call your attention to hazards or unsafe practices that could result in injury or property damage. The three signal words, defined below, indicate the severity of the hazard. The message after the signal word provides the information for preventing or avoiding the hazard.



DANGER

Immediate hazards that, if not avoided, **WILL** result in severe injury or death.



WARNING

Hazards that, if not avoided, **COULD** result in severe injury or death.



CAUTION

Hazards or unsafe practices that, if not avoided, **MAY** result in injury or property damage.

IMPORTANT SAFETY INFORMATION



WARNING

Read and understand all instructions and safety information in this manual before operating or servicing this tool.
Also read the instruction manual supplied with your drill.
FAILURE TO OBSERVE THESE WARNINGS CAN RESULT IN SEVERE INJURY OR DEATH.



WARNING – PERSONAL SAFETY HAZARDS

Wear eye protection and hard hat when using this tool.
Do not use this tool while tired or under the influence of drugs, alcohol, or medication.
Keep body parts and loose clothing away from moving parts.
Always follow operating procedures.
FAILURE TO OBSERVE THESE WARNINGS CAN RESULT IN SEVERE INJURY OR DEATH.



WARNING – ROLLING HAZARD

Do not use on unlevel surfaces. Roll Jack can roll away.
FAILURE TO OBSERVE THESE WARNINGS CAN RESULT IN SEVERE INJURY OR DEATH.



WARNING – CRUSH HAZARD

Keep clear of moving machine. Machine movement can cause serious injury. FAILURE TO OBSERVE THESE WARNINGS CAN RESULT IN SEVERE INJURY OR DEATH.

**WARNING – ENTANGLEMENT HAZARD**

Do not operate this tool while wearing loose-fitting clothing. Retain long hair. FAILURE TO OBSERVE THESE WARNINGS CAN RESULT IN SEVERE INJURY OR DEATH.

**WARNING – PINCH POINTS HAZARD**

Keep hands clear of moving parts. FAILURE TO OBSERVE THESE WARNINGS CAN RESULT IN SEVERE INJURY OR DEATH.

**WARNING – TOOL USE HAZARDS**

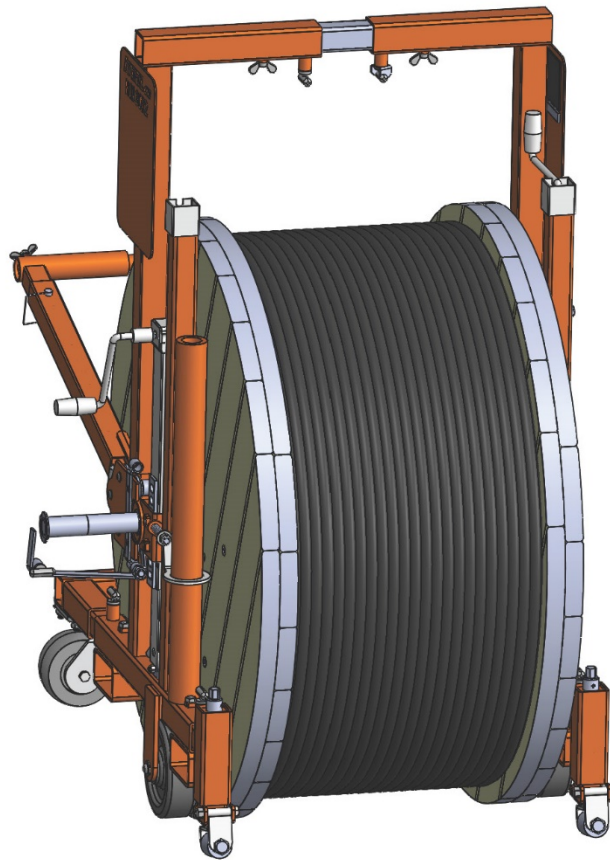
Use this tool for manufacturer's intended purpose only. Use other than that which is described in this manual can result in injury or property damage.

Inspect all aspects of the site condition prior to use and only use Roll Jacks on flat level ground. FAILURE TO OBSERVE THESE WARNINGS CAN RESULT IN SEVERE INJURY OR DEATH.



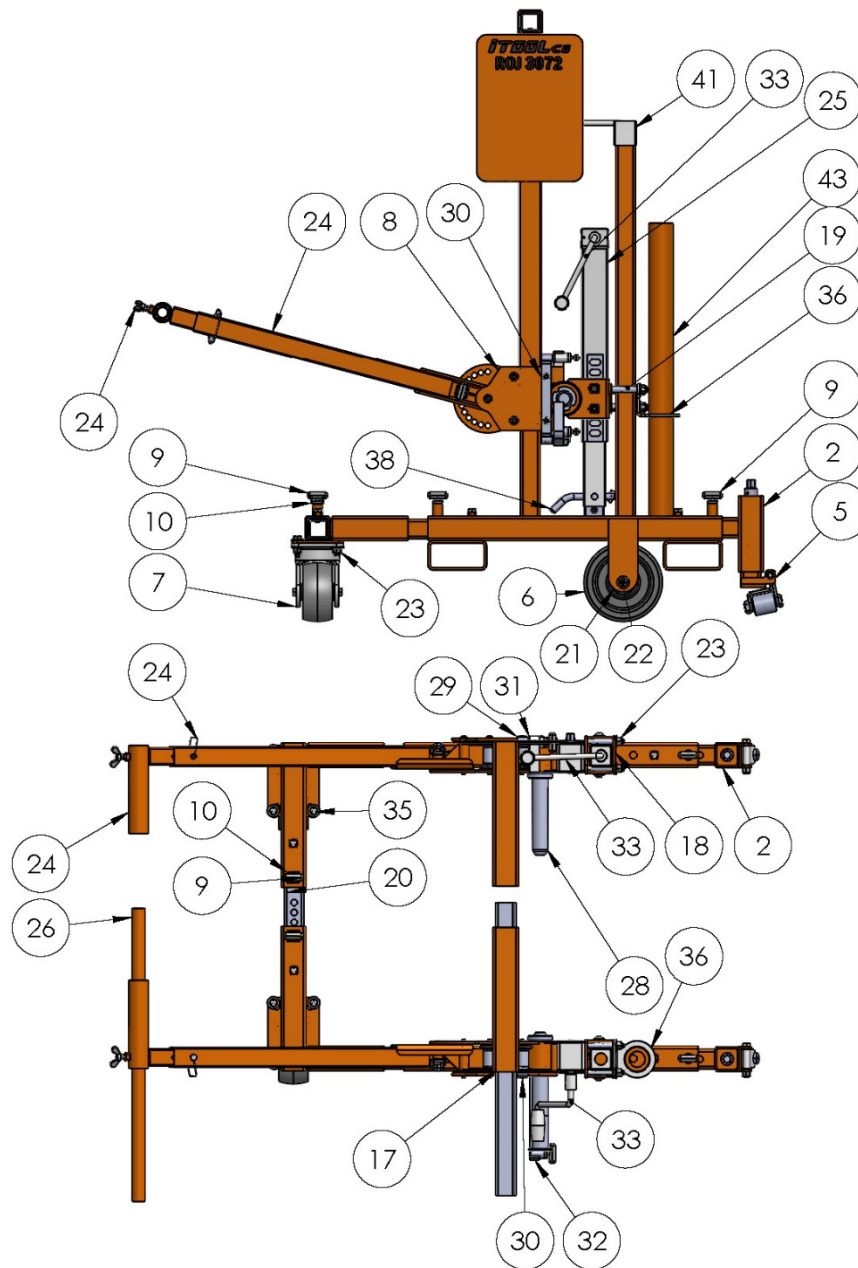
DESCRIPTION AND IDENTIFICATION

The iTOOLco Roll Jack is designed to move up to 6,000 lb. of wire safely. With independently spinning rings, Roll Jacks transport heavy wood spools or steel reels (with built-in axles) with little effort. One person can set-up and operate this innovative jack.

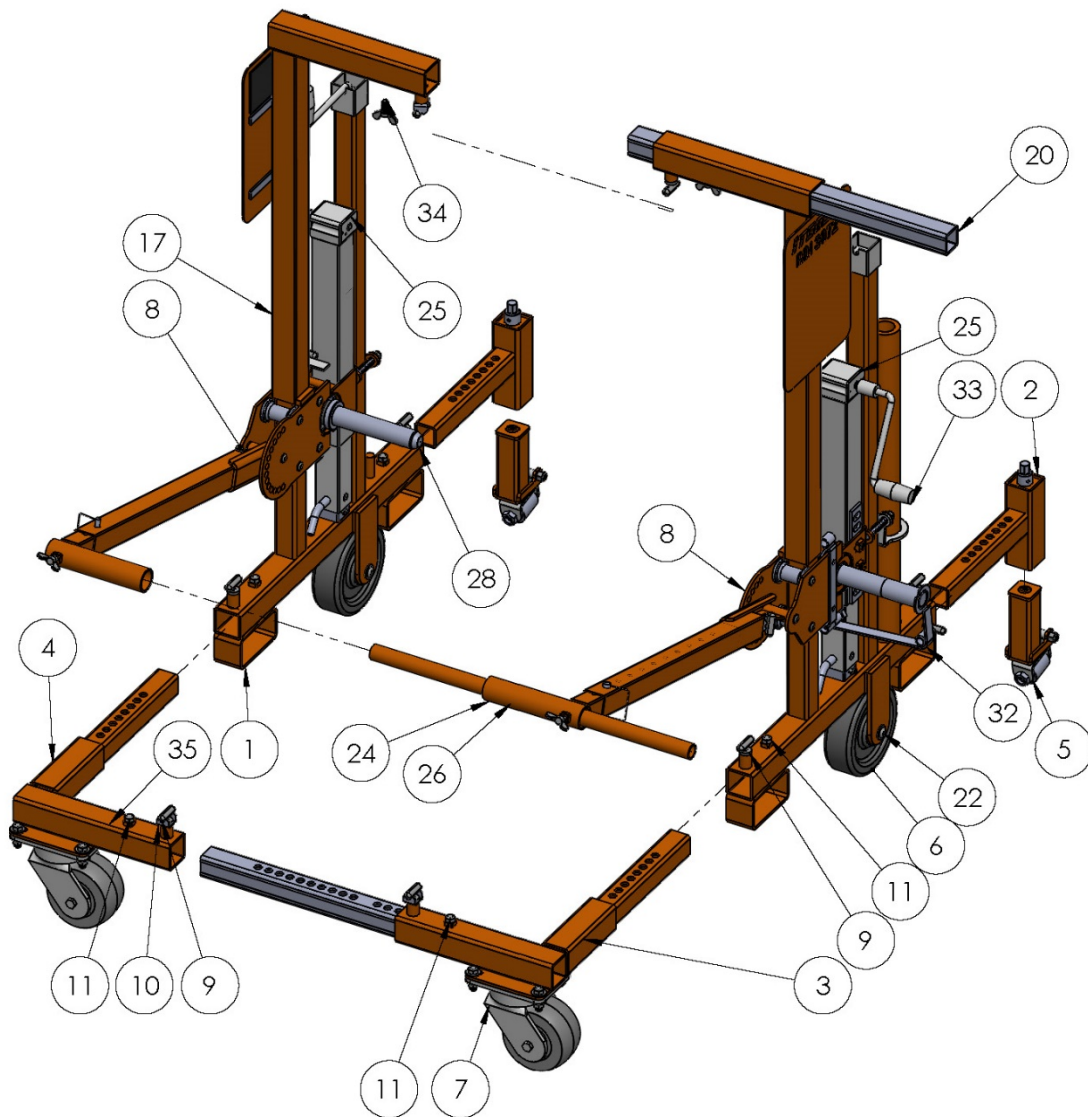


iTOOLco (865)670-3713		TITLE: Parts Break Out & BOM	
<small>PROPRIETARY AND CONFIDENTIAL THE INFORMATION CONTAINED IN THIS DRAWING IS THE SOLE PROPERTY OF iTOOL co. ANY REPRODUCTION IN PART OR AS A WHOLE WITHOUT THE WRITTEN PERMISSION OF iTOOL co. IS PROHIBITED.</small>		SIZE DWG. NO. A ROJ3072	
Date 6/1/17		SHEET 1 OF 6	

Patented and Patent Pending



iTOOLco. (865)670-3713 <small>PROPRIETARY AND CONFIDENTIAL THE INFORMATION CONTAINED IN THIS DRAWING IS THE SOLE PROPERTY OF iTOOL co. ANY REPRODUCTION IN PART OR AS A WHOLE WITHOUT THE WRITTEN PERMISSION OF iTOOL co. IS PROHIBITED.</small>		TITLE: Parts Break Out & BOM	
SIZE DWG. NO. A ROJ3072		Date 6/1/17	
		Weight 405 Lbs	SHEET 2 OF 6



IToolCo. (865)670-3713 <small>PROPRIETARY AND CONFIDENTIAL</small> <small>THE INFORMATION CONTAINED IN THIS DRAWING IS THE SOLE PROPERTY OF ITOOL CO. ANY REPRODUCTION IN PART OR AS A WHOLE WITHOUT THE WRITTEN PERMISSION OF ITOOL CO. IS PROHIBITED.</small>		TITLE: Parts Break Out & BOM	
SIZE DWG. NO. A ROJ3072		DATE 6/1/17	
		SHEET 3 OF 6	

ITEM NO.	PART NUMBER	DESCRIPTION	Default/Qty.
1	ROJ-401	Roll Jacks Side	2
2	ROJ-403	Front Jack Extension	2
3	ROJ-404	Back left Corner w/ caster bracket	1
4	ROJ-405	Back right Corner w/ caster bracket	1
5	ROJ-610	Front Jack Assembly w/ roller	2
6	SP- 225	8" wheel	2
7	SP-158	Swivel caster w/ Break	2
8	ROJ-606	Assembled Carriage	2
9	SP-001.2 (Sheet 6)	Pull Pop Pin	10
10	ROJ-430	Pop pin Holder	6
11	HW-290	1" -1/2" 13t STL CAP SCREW	6
SHEET 5	ROJ-416	Jack Break screw	2
SHEET 5	ROJ-440	3/4" ROJ Rod Jack Input End	2
SHEET 5	SP-153	3/4" Shielded thrust bearing	2
SHEET 5	HW-166	1/2" flat washer	24
SHEET 5	HW-123	1" - .25 roll pin	2
17	ROJ-408	Upright with Name Plate	2
18	ROJ-204	Bolt Plate	1
19	ROJ-423	2.625" of BM-79 Zinc Plated	4
20	ROJ-105M	30" - 2 X 2 X .188W BM-35 Inner Tele Tube	2
21	ROJ-128M	3.75" of BM-15 Wheel Axle	2
22	HW-313	3/4" - 1/2" 13t -Zinc Button head	4
23	HW-168	1/2" 13t Nyloc nut	12
24	ROJ-609	Handle Adjust Tube w/ 1/2-13 Wing Bolt (HW-164)	2
25	SP-210	8000LB Jack	2
26	ROJ-420	30" - 1" sch 40 (Handle)	1
27	SP-003	3 Hole Bottom Tube Clear Zinc	2
28	ROJ-421	Arbor	2
29	ROJ-410	Left Lock Mount	1
30	ROJ-411	Right Lock Mount	1
31	ROJ-413	Left Arbor Lock	1
32	ROJ-414	Right Arbor Lock	1
33	SP-211	Side Wind Jack Handle	2
34	HW-164	1" - 1/2" 13t wing bolt	2
35	HW-314	2.75"-1/2" 13t Grade 5 zinc cap screw	6
36	ROJ-437	Bolt Plate Axle Holder	1
37	Hw-182	5/8" nyloc nut	2
38	SP-232	Safety Hitch Pin for jack adjustment	2
39	HW-136	2.5" - 3/8 x 16T G5 cap screw	2
40	HW-306	1/2" 13T x nyloc nut	2
41	ROJ-422	Handle holder	2
42	SP-232	Safety Pin With Chain	2
43	AX05	30" Axle	1
44	SP-234	1/8" ABS Black Plastic 4" x 8.9375"	2

IToolCo.

(865)670-3713

PROPRIETARY AND CONFIDENTIAL

THE INFORMATION CONTAINED IN THIS DRAWING IS THE SOLE PROPERTY OF ITOOLCO. ANY REPRODUCTION IN PART OR AS A WHOLE WITHOUT THE WRITTEN PERMISSION OF ITOOLCO IS PROHIBITED.

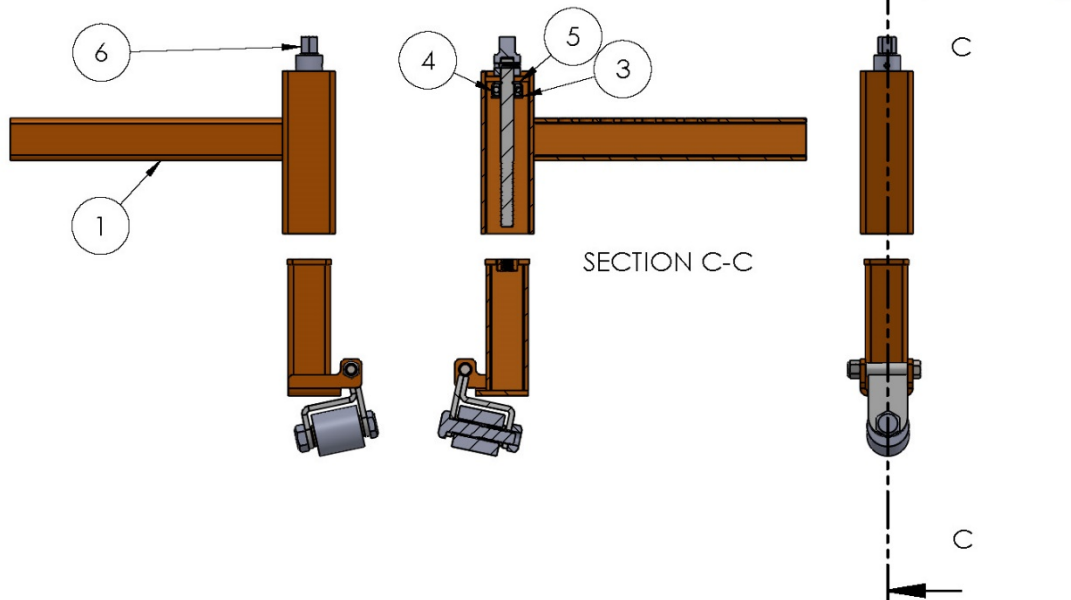
TITLE: Parts Break Out
& BOM

SIZE DWG. NO.
A ROJ3072

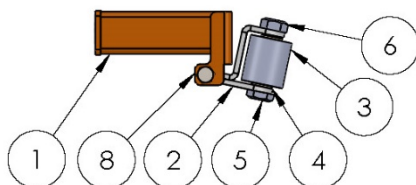
Date 6/1/17

SHEET 4 OF 6

ITEM NO.	PART NUMBER	DESCRIPTION	QTY.
1	ROJ-403	Front Jack Extension	1
2	ROJ-610	Front Jack Assembly w/ roller	1
3	ROJ-416	Front Jack Screw	1
4	SP-153	3/4" Shielded thrust bearing	1
5	HW-166	1/2" flat washer	1
6	ROJ-440	3/4" ROJ Rod end	1
7	HW-123	1"-.25 roll pin	1



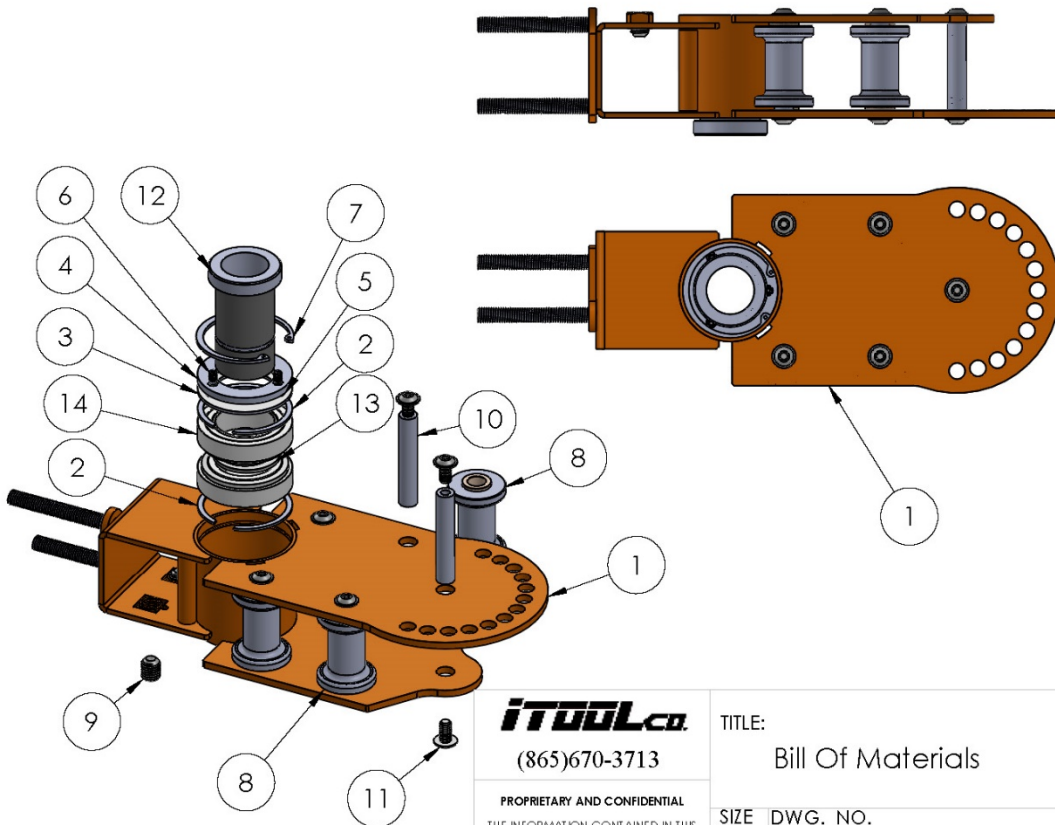
ITEM NO.	PART NUMBER	DESCRIPTION	QTY.
1	ROJ-415	Front Foot	1
2	ROJ-417	Front roller bracket	1
3	ROJ-439	2.2"- Foot Roller w/ Bearings	1
4	SP-179	Bearing 5/8 x 3/4x 5/8 x 1 x 1/8	2
5	HW-173	5/8" 11t x 3.25" Bolt	1
6	HW-182	5/8" nyloc nut	1
7	HW-168	1/2" 13t Nyloc nut	1
8	HW-314	1/2" 13t - 2-3/4" Bolt	1



IToolCo. (865)670-3713 <small>PROPRIETARY AND CONFIDENTIAL</small> <small>THE INFORMATION CONTAINED IN THIS DRAWING IS THE SOLE PROPERTY OF ITOOL CO. ANY REPRODUCTION IN PART OR AS A WHOLE WITHOUT THE WRITTEN PERMISSION OF ITOOL CO. IS PROHIBITED.</small>		TITLE: Parts Break Out & BOM SIZE DWG. NO. A ROJ3072 Date 6/1/17	
		SHEET 5 OF 6	

NOTE: Qty. is per Carrage

ITEM NO.	PART NUMBER	DESCRIPTION	QTY.
1	ROJ-402	Roll jack carriage	1
2	HW-214	Spacer 3.25"	2
3	RJ-204	Dust Cover	1
4	ROJ-407	Dust Cover	1
5	HW-125	Press fit nut	3
6	HW-310	1/4-20 x 3/8L flat point set screw	3
7	HW-218	3.25 Internal Retaining Ring	1
8	ROJ-438	Profiled Roller	5
9	HW-305	5/8" 1 1/4" Set Set	2
10	ROJ-125M	3.5" of BM-21	5
11	HW-309	3/8" 1 1/2 x 3/4"L Flange bolt	10
12	ROJ-107M	4.5" Inner Arbor	1
13	HW-288	2" HD External Retaining Ring	1
14	SP-132.2	2" Axle Bearing	2



iTOOLCO
(865)670-3713

PROPRIETARY AND CONFIDENTIAL
THE INFORMATION CONTAINED IN THIS
DRAWING IS THE SOLE PROPERTY OF
iTOOL CO. ANY REPRODUCTION IN
PART OR AS A WHOLE WITHOUT THE
WRITTEN PERMISSION OF
iTOOL CO. IS PROHIBITED.

TITLE:

Bill Of Materials

SIZE

A

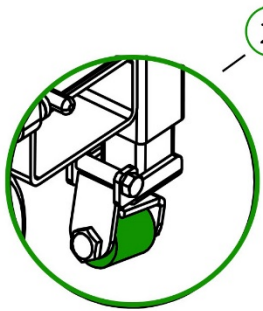
DWG. NO.

ROJ-606

Date 6/1/17

SHEET 6 OF 6

SET UP AND OPERATION



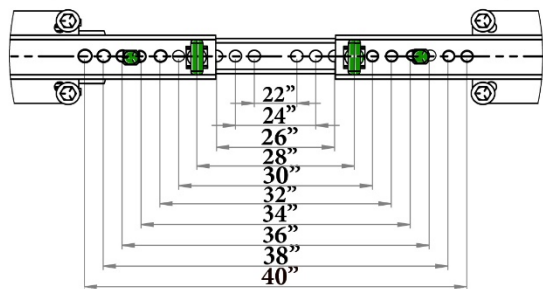
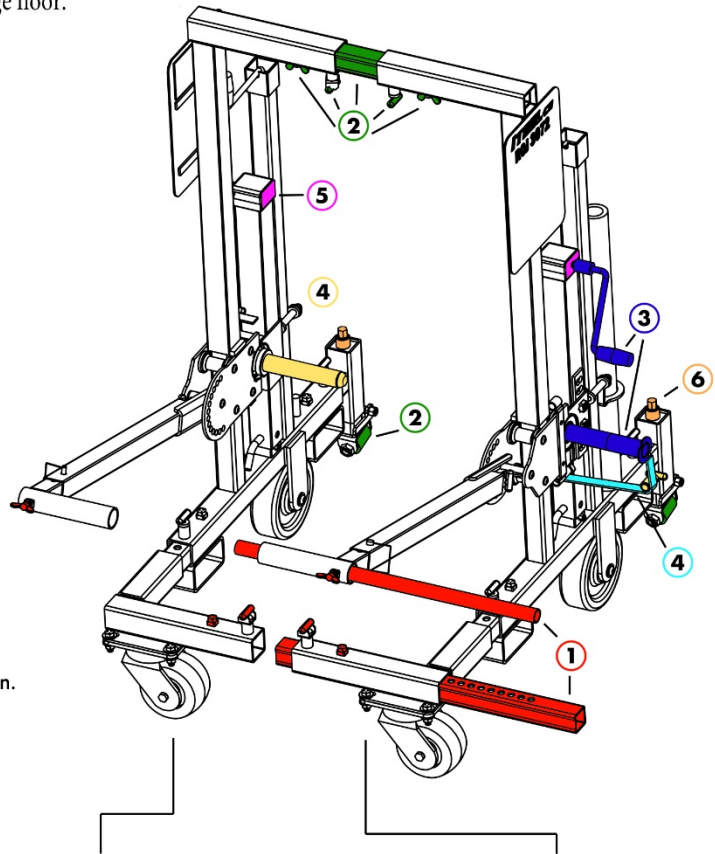
2. Position adjustment roller downward to engage floor.

ROLL JACKS

ALL STEPS ARE COLOR CODED

- 1 Loosen the half inch bolts on lower connector and position pop pins to their disengaged position. Slide inner beam out as shown. Loosen wing bolts on the handle and position as shown. (Note: Ensure that both jacks are evenly set for easy connector removal.)
- 2 Engage width adjustment roller. Set the upper connector to a position at a minimum of two inches larger than the spool to be lifted by placing the pop pins in their disengaged position. Loosen the wing bolts. {See chart (right). Once upper connector is set, pop pins are re-engaged and wingbolts are tightened. Set lower connector to the same position matching the amount of exposed holes as upper. Reposition handle, tighten wing bolts.}
- 3 Reopen arbor, position Roll Jacks at accepting spool height by turning the jacks clockwise or counterclockwise until the center of the spool and the center of the arbor line up. Repeat for both sides.
- 4 Insert arbor into hole and reset arbor locks ensuring pop pins are engaged.
- 5 Raise jacks to lift spool off of the ground, move into position.
- 6 Disengage width adjustment roller and set telescoping brake.

Reverse process to unload.



SPOOL WIDTH SETTINGS

IToolCo.

IToolCo.com | 865.670.3713

VIDEO





LIMITED WARRANTY: ITOOLCO ROLL JACKS 3072

iTOOLCo warrants all new Roll Jacks 3072 covered by this agreement, when properly used, to be free from defects in material and workmanship under normal use and service for which it is intended for a period of one year from date of delivery by the dealer. Date of delivery shall be the date product is placed in possession of the user. NORMAL WEAR FROM USE IS NOT PART OF THIS WARRANTY. This limited warranty is extended to the original user only and is not transferrable to, nor enforceable by any other person.

iTOOLCo will replace free of charge any part(s) of the product found to be defective when such part(s) is returned to iTOOLCo at the address shown below, freight prepaid. If the part(s) is found to be defective, iTOOLCo will refund freight charges paid by you in returning the defective part(s) and prepay replacement part(s) freight charges. iTOOLCo will not be responsible for more than replacement of any defective part(s) and standard freight charges (parcel post or UPS ground rate) of any part(s) found to be defective.

THIS IS THE EXCLUSIVE REMEDY. ITOOLCO SHALL NOT BE RESPONSIBLE OR LIABLE FOR ANY INCIDENTAL OR CONSEQUENTIAL DAMAGES RESULTING FROM ANY DEFECTS COVERED BY THIS WARRANTY OR ANY IMPLIED WARRANTY APPLICABLE TO THE PRODUCT INCLUDING, BUT NOT LIMITED TO, PROPERTY DAMAGE, LOSS OF USE OF PRODUCT, LOSS OF TIME, LOSS OF PROFITS, INCONVENIENCE, COMMERCIAL LOSS, LABOR COSTS, SERVICE TRIPS, AND MILEAGE.

Some states do not allow limitation on how long an implied warranty lasts, so the above limitation may not apply to you.

Dealer/Distributor Warranty Claim Procedure

1. All warranty claims must be pre-approved by iTOOLCo Warranty Department PRIOR to starting any warranty work. Warranty work performed without prior approval will not be considered.
2. All claims must be handled through dealer/distributor.
3. Written approval must be received from iTOOLCo before return of merchandise. A Return Authorization is to be returned with the merchandise which is sent back.
4. All parts must be returned to iTOOLCo at the address shown below, freight prepaid.
5. The serial number of the product and the date of delivery must accompany the part(s) being returned.
6. If the part(s) is found to have failed because of a defect in material or workmanship, replacement will be made on a no-charge basis, and the part(s) returned, freight prepaid. Standard freight charges (parcel post or UPS ground rate) incurred in returning the part(s) will be refunded.
7. For reasons of expediency, replacement and/or repair part(s) may be shipped as soon as possible and billed to the dealer/distributor. When part(s) is returned, if it is covered under warrant, credit will be issued for the part(s) and freight charges.
8. All parts found to be defective shall be retained by and shall become the property of iTOOLCo. This warranty gives you specific legal rights, and you may also have other rights which vary from state to state.

Corporate Address: iTOOLCo
100 Meco Lane
Oak Ridge, TN 37830

