



User's Guide



ALL JACK

1325 CARDEN FARM DRIVE | CLINTON, TN 37715 | 865.670.3713 | ITOOLCO.COM
© 2020 PROPERTY OF ITOOLCO



BEFORE OPERATION OF THIS TOOL, READ AND UNDERSTAND ALL OF THE INSTRUCTIONS AND SAFETY INFORMATION IN THIS MANUAL



Contents

SAFETY FIRST	3
SAFETY ALERT SYMBOLS.....	3
IMPORTANT SAFETY INFORMATION	4
DESCRIPTION AND IDENTIFICATION.....	5
SETUP AND INSTALLATION.....	7
LIMITED WARRANTY: ITOOLCO ALL JACK.....	13

SAFETY FIRST

Safety is essential in the use and maintenance of this tool. This instruction manual and any markings on the tool provide information for avoiding hazards and unsafe practices related to the use of this tool. Observe all of the safety information provided.

SAFETY ALERT SYMBOLS

This symbol is used to call your attention to hazards or unsafe practices that could result in injury or property damage. The three signal words, defined below, indicate the severity of the hazard. The message after the signal word provides the information for preventing or avoiding the hazard.



DANGER

Immediate hazards that, if not avoided, **WILL** result in severe injury or death.



WARNING

Hazards that, if not avoided, **COULD** result in severe injury or death.



CAUTION

Hazards or unsafe practices that, if not avoided, **MAY** result in injury or property damage.

IMPORTANT SAFETY INFORMATION



WARNING – TOOL USE HAZARDS

Use this tool for manufacturer's intended purpose only. Use other than that which is described in this manual can result in injury or property damage.

The All Jack is intended to lift and hold in place up to 20 lbs.

When used as a jack screw a maximum Jacking weight is 175 lbs.

Never pull locked pins as load will fall when used as a screw jack.

Always wear a hard hat and safety glasses when using the All Jack.

Use a separate means of tie off for loads when working overhead or above other personnel.

This jack is not intended for use as a temporary structural support.

FAILURE TO OBSERVE THESE WARNINGS CAN RESULT IN SEVERE INJURY OR DEATH.



WARNING

Read and understand all instructions and safety information in this manual before operating or servicing this tool.

Also read the instruction manual supplied with your drill.

FAILURE TO OBSERVE THESE WARNINGS CAN RESULT IN SEVERE INJURY OR DEATH



WARNING – PERSONAL SAFETY HAZARDS

Only qualified persons should use iTOOLco All Jack.

Wear eye protection and hard hat when using this tool.

Do not use this tool while tired or under the influence of drugs, alcohol, or medication.

Keep body parts and loose clothing away from moving parts.

Always follow operating procedures.

FAILURE TO OBSERVE THESE WARNINGS CAN RESULT IN SEVERE INJURY OR DEATH.



WARNING – ENTANGLEMENT HAZARD

Do not operate this tool while wearing loose-fitting clothing.

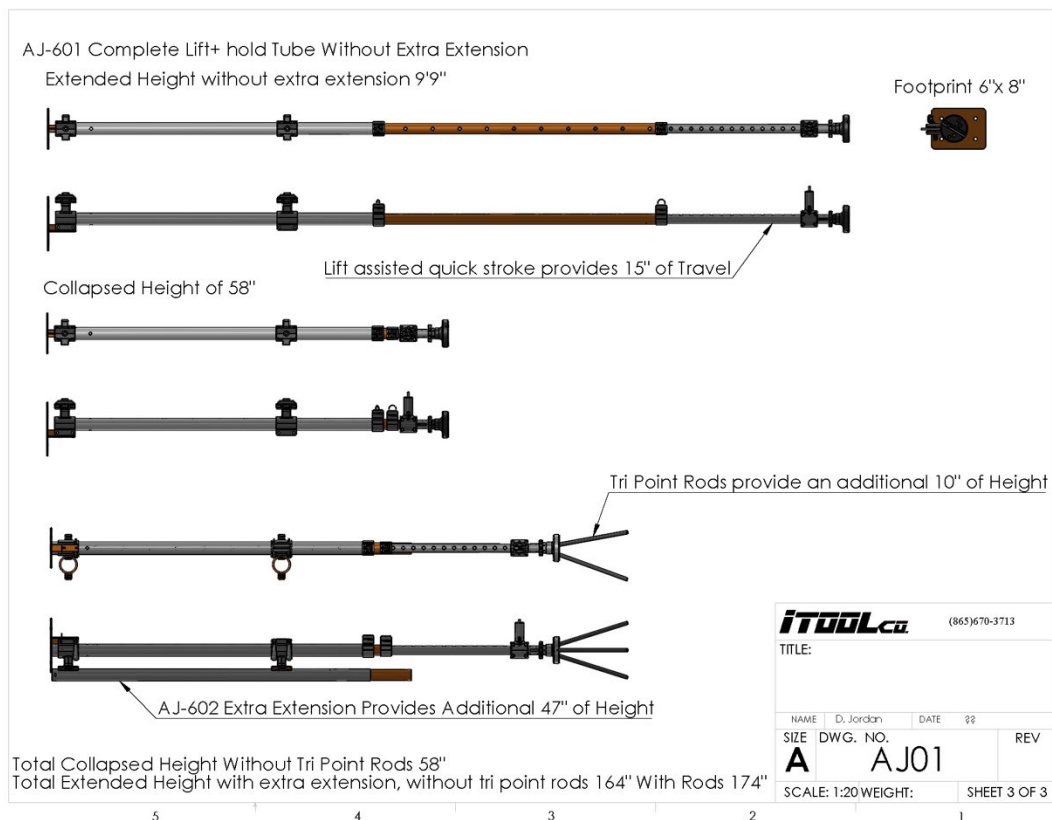
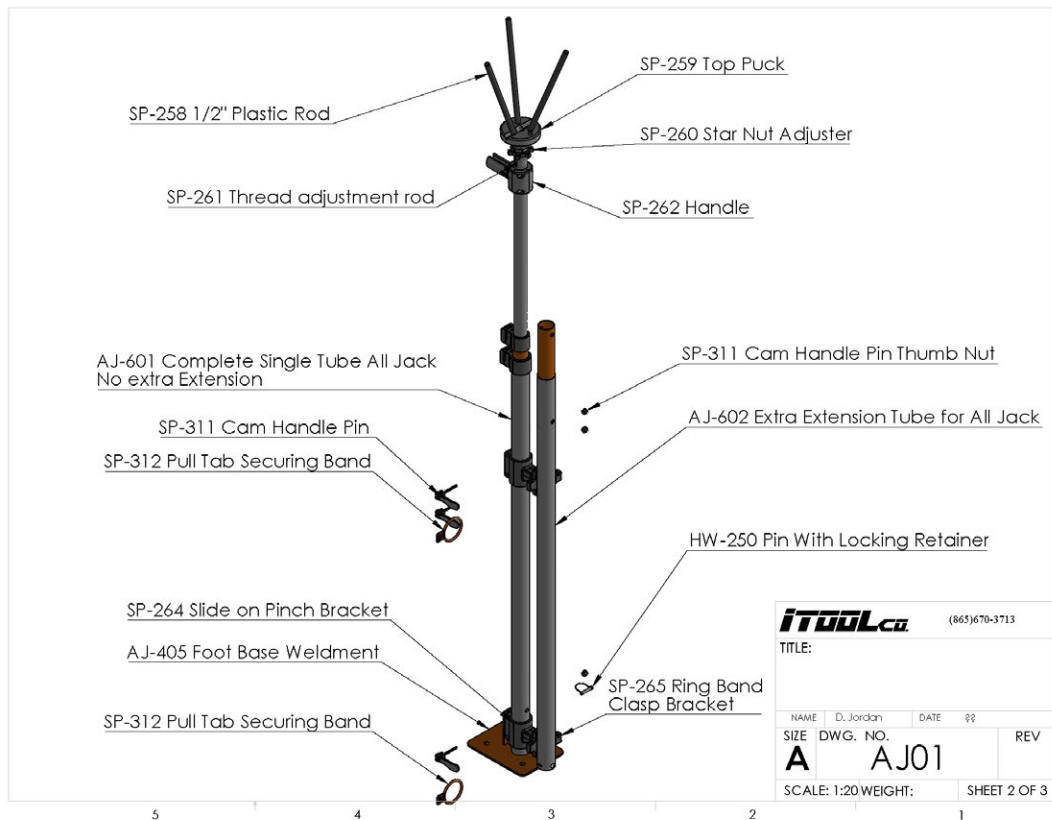
Retain long hair.

FAILURE TO OBSERVE THESE WARNINGS CAN RESULT IN SEVERE INJURY OR DEATH.

DESCRIPTION AND IDENTIFICATION

Increase productivity and decrease fatigue using iTOOLCo's All Jack™. Install pipe, lights, cabinets, drywall, temporary dust barriers and much more with this innovative jack designed to lift and support the weight of your workpiece while you anchor it into position. High ceilings and ladder work are not a problem for this dynamic tool. Reach from 58" to a staggering height of 13'6". The industrial gas shock ensures a snug, stable support that stays in place while you complete the installation. Once your workpiece is secured into place, simply remove the All Jack™ by releasing the shock.





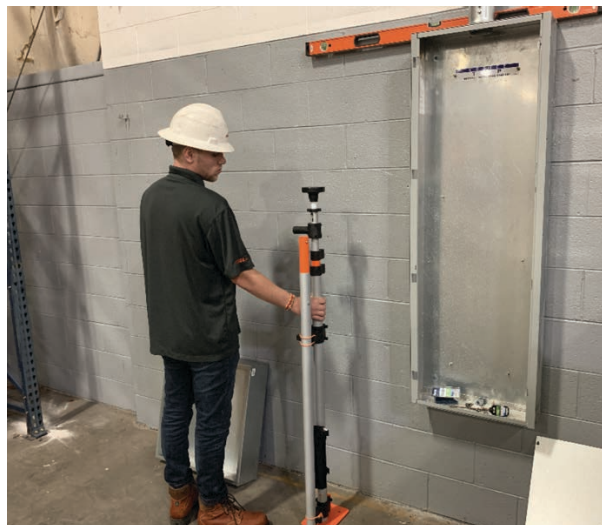
SETUP AND INSTALLATION

Step 1: Remove All Jack and extension from bag.

Step 2: Inspect All Jack for proper operation.



Step 3: Position next to workpiece that need to be held up adjacent to final anchoring position.



Step 4: On lower pin, pull pin to adjust rough height of final position and re-engage within 12 to 15 inches below the final anchored position of the workpiece.





Step 5: On upper locking pin, pull out and turn finger ring to unlocked position to allow upper arm to extend and retract when engaging the gas shock lever.



Step 6: While pulling down on gas shock engagement handle, use thumb or finger to engage gas shock with pressure on handle adjust to your working height.



Step 7: To add extension, remove rubber retaining rings from the two fastened positions as seen here.



Step 7 (continued): Remove jack from base by loosening the two quick adjust bolts as shown. Then remove pole from base, insert extension and tighten bolts.

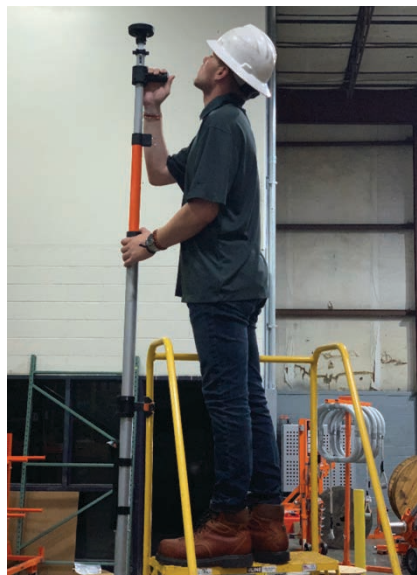


Depress push pinpoint and connect two poles together.





Step 8: To tie All Jack to railing or ladder, turn bracket vertical or horizontally to mate with framing member.

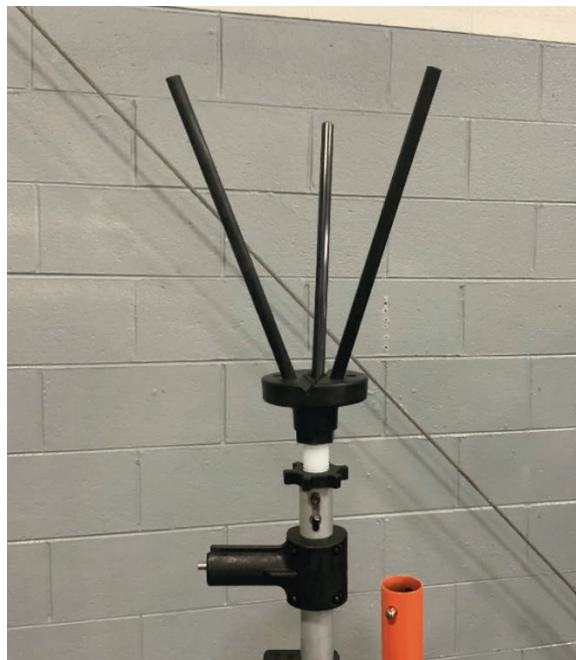


Step 9: For angled mounting, remove lower quick bolt as seen here.

This will allow jack to pivot as shown.



Step 10: Provided nuts, bolts and rods can be used for extra stabilization when mounting struts, pipe and dome fixtures.





Step 11: When using as a screw jack, ensure all pins are in their secure and locked position 1" below final workpiece height. Adjust the screw accordingly.

(CAUTION: Always use additional means to tie off workpiece for additional fall protection. Use an approved chain, cable or rope suited for type of application. Follow OSHA guidelines.)

Never pull locked pin when All Jack is under a load.



To lock and unlock pull and turn 90 degree as shown here. Note vertical positioning is locked.





LIMITED WARRANTY: ITOOLCO ALL JACK

iTOOLCo warrants all new All Jacks covered by his agreement, when properly used, to be free from defects in material and workmanship under normal use and service for which it is intended for a period of one year from date of delivery by the dealer. Date of delivery shall be the date product is placed in possession of the user. NORMAL WEAR FROM USE IS NOT PART OF THIS WARRANTY. This limited warranty is extended to the original user only and is not transferrable to, nor enforceable by any other person.

iTOOLCo will replace free of charge any part(s) of the product found to be defective when such part(s) is returned to iTOOLCo at the address shown below, freight prepaid. If the part(s) is found to be defective, iTOOLCo will refund freight charges paid by you in returning the defective part(s) and prepay replacement part(s) freight charges. iTOOLCo will not be responsible for more than replacement of any defective part(s) and standard freight charges (parcel post or UPS ground rate) of any part(s) found to be defective.

THIS IS THE EXCLUSIVE REMEDY. ITOOLCO SHALL NOT BE RESPONSIBLE OR LIABLE FOR ANY INCIDENTAL OR CONSEQUENTIAL DAMAGES RESULTING FROM ANY DEFECTS COVERED BY THIS WARRANTY OR ANY IMPLIED WARRANTY APPLICABLE TO THE PRODUCT INCLUDING, BUT NOT LIMITED TO, PROPERTY DAMAGE, LOSS OF USE OF PRODUCT, LOSS OF TIME, LOSS OF PROFITS, INCONVENIENCE, COMMERCIAL LOSS, LABOR COSTS, SERVICE TRIPS, AND MILEAGE.

Some states do not allow limitation on how long an implied warranty lasts, so the above limitation may not apply to you.

Dealer/Distributor Warranty Claim Procedure

1. All warranty claims must be pre-approved by iTOOLCo Warranty Department PRIOR to starting any warranty work. Warranty work performed without prior approval will not be considered.
2. All claims must be handled through dealer/distributor.
3. Written approval must be received from iTOOLCo before return of merchandise. A Return Authorization is to be returned with the merchandise which is sent back.
4. All parts must be returned to iTOOLCo at the address shown below, freight prepaid.
5. The serial number of the product and the date of delivery must accompany the part(s) being returned.
6. If the part(s) is found to have failed because of a defect in material or workmanship, replacement will be made on a no-charge basis, and the part(s) returned, freight prepaid. Standard freight charges (parcel post or UPS ground rate) incurred in returning the part(s) will be refunded.
7. For reasons of expediency, replacement and/or repair part(s) may be shipped as soon as possible and billed to the dealer/distributor. When part(s) is returned, if it is covered under warrant, credit will be issued for the part(s) and freight charges.
8. All parts found to be defective shall be retained by and shall become the property of iTOOLCo. This warranty gives you specific legal rights, and you may also have other rights which vary from state to state.

Corporate Address: iTOOLCo
1325 Carden Farm Drive
Clinton, TN 37716

